

MAGNIFIDENT

**Lucky
Draw**



2 is Twice as NICE !



**JANUARY
SPECIAL OFFER**



Stand a chance to win
the 2 x Le Art LED featherlight Coloured Handpieces
Only Purchases over R5,000 will qualify for the DRAW
The More you Buy the higher the chance to WIN !!

FREE Delivery when Purchasing consumables over
R2000

Our Prices Are Vat Inclusive
Check before you buy !

**IMPORTANT
NOTICE**

**DON'T^{GET}
FOOLED**



**We Supply VAT Invoices
which Means you save !!**

2026 FULL Promo Package Deal with Amalgam Separator

2026 Promo Chair – with Built in Electric Motor and Electric EndoMotor
Upgraded to 4 BULB **LED** Operator Light with Touchless Sensor ,1 x Stool
1 x Built in Whitening/ Bleaching Lamp
2 x Fast Turbine Handpiece Set
1 x Slow Set Handpiece Set – Latch Type
1 x Portable Xray Package Deal (Xray ,#1 Sensor , Positioner + Apron)
1 x IntraOral camera and Monitor
1 x 1-surgery 32L Oil-Less Compressor
1 x Built-in LED Curing Light
1 x Built-in LED Scaler
1 x 1-Surgery Semi-wet suction
10 x Adult Forceps 10pcs)
7 x Paedo Forcep kit (7pcs)
5 x Stainless Steel Cassettes
50 x Hand instruments (5 sets)
1 X Free Adaptive Matrix Kit
1 X Rubber Dam Kit + 6 clamps
1 x Steam Sterilizer 18L Class NM
1 x White Distilled water generator
1 x Ultrasonic Baths (3.2L)
1 x Instrument Wrapping Machine
1 x External Dental Aerosol Suction
1 x Handpiece Oil Adaptor Kit + 3 Oil
1 x Overshoe dispenser KIT+200 overshoes
1 x Single Door UV Cabinet
1 x Room Atomiser

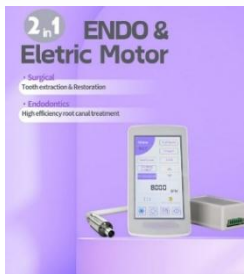
**Special
Package
Deals!**

EXCLUSIVE

NB: Available in
Blue , Green , Silver and Pink

R229 900

**Free Delivery and Installation in
Gauteng Only ! T's & C's Apply
1st 3 Customers ONLY**



PROMO 2026 CHAIR

PROMO SERIES

2 in 1 ENDO & Electric Motor

- Surgical
Tooth extraction & Restoration
- Endodontics
High efficiency root canal treatment

**CRAZY
DEAL**



**First 5 customers this MONTH
get FREE Upgrade to
Built-in 2-in-1 Electric Motor with
Surgical Electric Motor
Endo Electric Motor***

*Excludes ContraAngle handpieces
Handpieces Sold Separately



*NB: Available in
Blue , Green , Silver and Pink*

**R89,900
LIMITED EDITION**

- ✓ Luxury white Finish
- ✓ Upgraded to 4 Bulb LED Lamp
- ✓ Upgraded to 2 Arm Rests
- ✓ Upgraded to 3 Memory Programs
- ✓ Upgraded Assistant Control Panel
- ✓ Upgraded to Multifunction foot Control Panel
- ✓ Built-in Clean water System
- ✓ Built-in LED Scaler + Tips
- ✓ Built-in LED Curing Light
- ✓ Automatic Cup filler
- ✓ Glass Spittoon
- ✓ Sanitary PU leather Finish
- ✓ Double articulating headrest
- ✓ Free 30L Compressor
- ✓ Free 2 x Dental Assistant Stool
- ✓ Free Prophy Abrasion Handpiece
- ✓ Free Fast Handpiece x 2
- ✓ Free slow Set
- ✓ Free IntraOral Camera System
- ✓ Free teeth Whitening System



MDENT S2 PLUS

SMART 2+ Dental Unit
with DUWL

Dental Unit Water Line
Disinfection

NOW IN STOCK



SMART DESIGN

SMART +
2



- ✓ White Finish
- ✓ Upgraded to 4 Bulb LED Lamp
- ✓ Upgraded to 2 Arm Rests
- ✓ 4 Hole Midwest Connections
- ✓ 3 Memory Programs
- ✓ Built-in Clean water System
- ✓ Automatic Cup filler
- ✓ Rotatable Spittoon
- ✓ Built-in LED Curing Light
- ✓ Sanitary Cushion
- ✓ Double articulating headrest
- ✓ One Touch Disinfection-DUWL
- ✓ Free Dental Stool
- ✓ Built-in LED Ultrasonic Scaler
- ✓ 1 x Free LED Handpieces
- ✓ 1 x Free Slow Set
- ✓ 1 x Free Prophy AirJet

LIMITED EDITION

Built in Aseptic Disinfection System - DUWL

**Effectively reduce the Multiplication of Bacteria
and the accumulation of BIOFILM
In the WATER LINE**

- One Button Key Operation
- Fully Automatic
- Working Indicator Prompt
- Easy to Use
- Peace of Mind
- Covid-19 Enhanced System



NB: Available in Yellow/Orange & White

R89,900

With Built-in Scaler, Built-in Curing Light
Free Dental Stool
Free Fast and Slow Handpieces



MDENT S3 PLUS

SMART 3+ Dental Unit

Knee Break Folding Dental Unit



*Optional Intra Oral
Camera &
17" Monitor*

SILVER SERIES

SMART DESIGN

SMART

3+



NB: Available in Optional Cart System
Choice of colours Available

R129,900

With Built-in Scaler, Built-in Curing Light
Free Dr. Stool and Assistant Stool
Free Fast and Slow Handpieces

Optional Extras:

- Available as Cart or Stand alone
- Available as Side delivery or Top Delivery Unit
- Available with Optional NEBULA Dental Lamp

- ✓ White Finish
- ✓ Upgraded to 6 Bulb LED Lamp
- ✓ 4 Hole Midwest Connections
- ✓ 3 Memory Programs
- ✓ Built-in Clean water System
- ✓ Automatic Cup filler
- ✓ Rotatable Spittoon
- ✓ Built-in LED Curing Light
- ✓ Built in LED Scaler
- ✓ Double articulating headrest
- ✓ Free Premium Dr. Stool
- ✓ Free Assistant Stool
- ✓ 1 x Free FAST LED Handpiece
- ✓ 1 x Free Slow Set
- ✓ 1 x Built in Electric Motor with Red Ring 1:5



丹特思®
Detes
DETES MEDICAL SUPPLIES

TOP 301-2025

ROTARY with DUWL

Dental Unit Water Line
Disinfection



丹特思[®]
Detes
DETES MEDICAL SUPPLIES



Includes the built-in
Electric Motor And
Handpiece

High End Chair for the Up-Market Clinic
Chair Rotates 90 degrees- Innovation !
Seamless from consult to Examination
You Clients will love it !!
Automatic Disinfection Unit

DIAMOND SERIES

Free 17" IntraOral Camera +
Mounting Arm to Unit



PRE ORDER

Detes[®]
DETES MEDICAL SUPPLIES



R159,900

With Built-in LED Scaler and LED Curing Light
integrated Electric Dental Motor and handpiece
FREE Dr Saddle Stool and Assistant Stool

- ✓ 90 Degree Rotating Chair
- ✓ Knee Break Chair
- ✓ Leather upholstery + Cushion
- ✓ Upgraded to 4 Bulb LED Lamp
- ✓ Optional Nebula implant Lamp
- ✓ Upgraded to 2 Arm Rests
- ✓ 4 Hole Midwest Connections
- ✓ 9 Memory Programs
- ✓ Built-in Clean water System
- ✓ Automatic Cup filler
- ✓ Rotatable Spittoon
- ✓ Central Disinfection System
- ✓ Built-in LED Curing Light
- ✓ Built-in LED Ultrasonic Scaler
- ✓ Double articulating Headrest
- ✓ Modern Dr's Stool
- ✓ Assistant Regular Stool
- ✓ 2 X Free Led Fast Handpieces
- ✓ 1 x Slow Set
- ✓ FREE IntraOral Camera System
- ✓ Built-in Electric Motor –includes
FREE Red Ring 1:5 Handpiece
worth R15,000

2 in 1 ENDO & Electric Motor

- Surgical
Tooth extraction & Restoration
- Endodontics
High efficiency root canal treatment



Endodontic Function with reciprocating modes

Compatibility with different file brands:
Dentsply, VDW, Sirona and ect.



TECHNICAL PARAMETERS

- Product name: 2-in-1 endo & electric motor
- Speed Range: 100~40,000 r/min (rpm) (electric motor mode)
- Max torque: 4.2N.cm (electric motor mode)
- Speed Range: 200~1600 r/min (rpm) (endo mode)
- Torque range: 0.6-4N.cm (endo mode)
- Rotation: Forward/Reverse (electric motor mode)
- Rotation: Forward/Reverse/reciprocation (endo mode)
- Compatible contra angle: 1: 1/1:4.2/1.5/4:1/10:1/16:1/20:1
- Motor Size: $\Phi 22\text{mm} \times L70.4\text{mm}$
- Motor Weight: 71g
- Noise: <60dB
- Motor Luminous intensity: >25000LX
- Output Voltage: AC24V, DC36V/3.33A
- PACKAGE SIZE: 223*184*95(L*W*H)



Electric motor mode



Endomotor mode

Electric motor with different contra angle



1:5 Contra angle

Constant speed and torque creates a smoother and more precise cut, work efficiency is 60% higher

1:1 Contra angle

For teeth Restoration, Polishing, grinding functions, etc.

4:1 Contra angle

Root canal treatment with built-in endo files of most famous brands

1:4.2 Contra angle:

Efficient tooth extraction

R29 900

- Free 1:5 optional Handpiece on Promo Only

1:5 High Speed
For Electric Motor
Red Ring
With Fibre Optic
Available as
Internal/External



R6 999

1:4,2 High Speed
For Electric Motor
Red Ring
With Fibre Optic
Available as
Internal/External



R7 999

1:1 Slow Speed
For Electric Motor
Blue Ring
With Fibre Optic
Available as
Internal/External



R5 999

4:1 Slow Speed
For ENDO Electric
Motor Green Ring
With Fibre Optic
Available as
Internal/External



R6 999

1:20 ContraAngle for Implant
Surgery With Fiber Optic



R7 999

1:1 Straight Handpiece for
General Surgery With
Fiber Optic



R7 999

HANDPIECES for
Electric Motor



KIDDIES DENTAL UNIT

**FREE MULTI
MEDIA
TABLET**

Includes Scaler
and Curing light



R89 900

DINO + CAT ANIMATED DENTAL UNIT

**FREE MULTI
MEDIA
TABLET**



R139 900

FANTASY KIDS DENTAL UNIT



R149 999



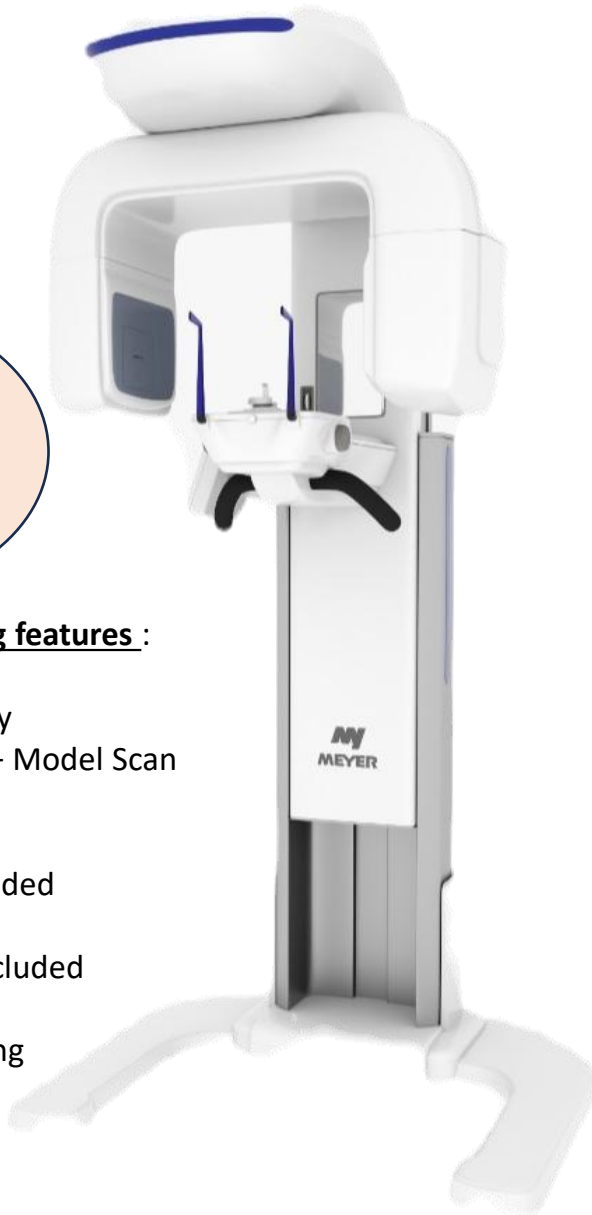


MEYER CBCT

"The Reliable Choice"



Whatsapp
0845837274
For Brochure and
more Details



Now with the following features :

- Loaded with Ai Technology
- CBCT and Pano Function + Model Scan
- Upgraded to DUAL FOV
13 x 10 , 8 x 5
- Computer + Monitor included
- Floor Stand included
- Standard 2yr Warranty included
- Free Delivery in Gauteng
- Free Installation in Gauteng



✦ **AI**
✦ **ARTIFICIAL**
INTELLIGENCE

Take ^{THE} Leap

R 599,900

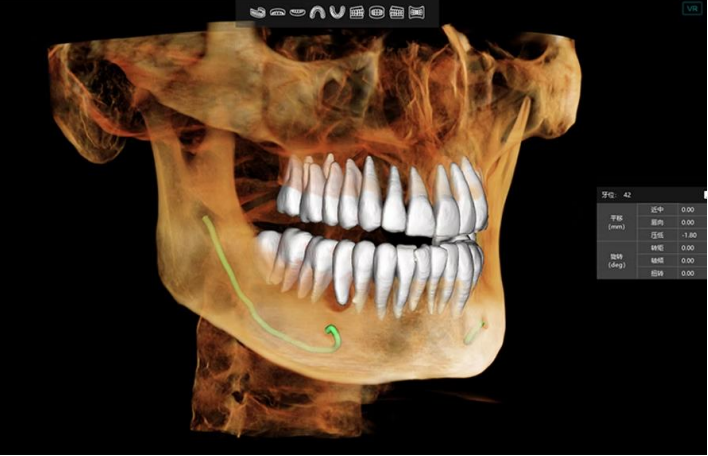
Superior Quality
Clear imaging, meeting comprehensive clinical
diagnosis and treatment needs

Rich functionality significantly enhances
doctor-patient communication efficiency

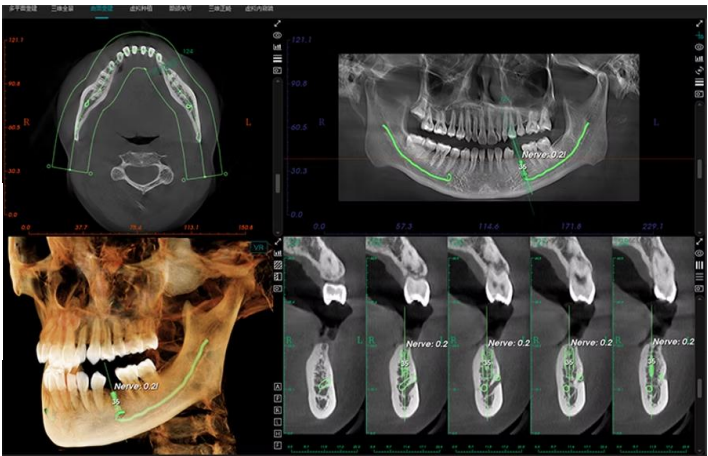
Super high Quality Dental CBCT Machine , with
Artificial Intelligence

- Inferior Alveolar Nerve Tracing Ai
- Virtual EndoScopy with Video Playback Ai
- Root Canal Ai
- Optional Ceph with One click tracing Ai
- Orthodontic Tooth Segmentation Ai
- CPR - Curve Plane Reconstruction
- Smart Pan - Adult and Kids
- Maxillary Sinus
- Virtual Extraction and Implant Simulation
- Magic Button for Metal Artifact Reduction
- Model Scanning
- De-Noising

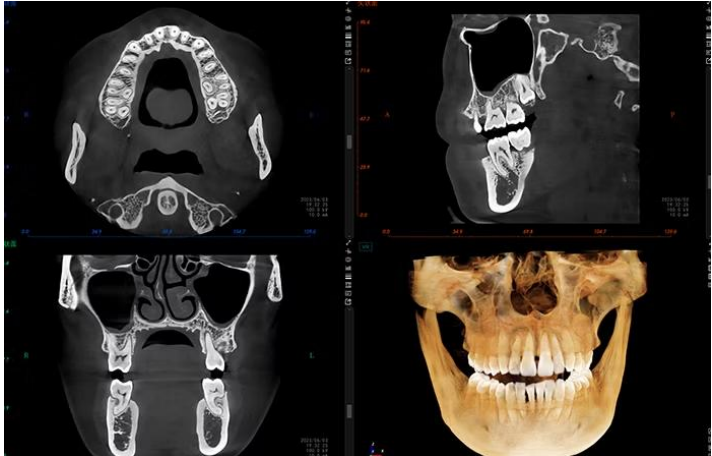




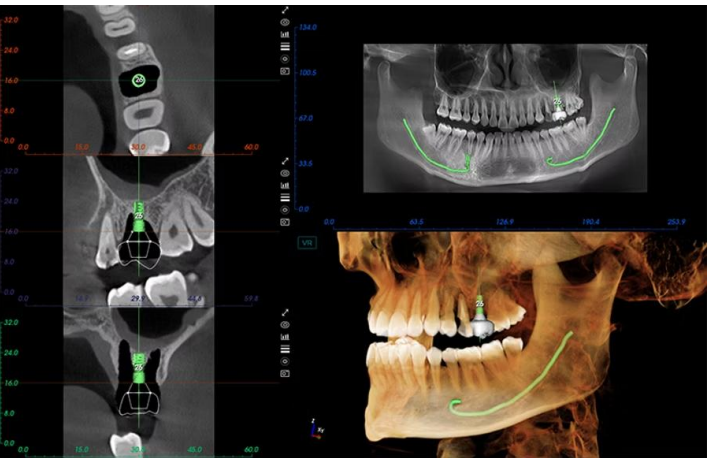
AI
ARTIFICIAL
INTELLIGENCE



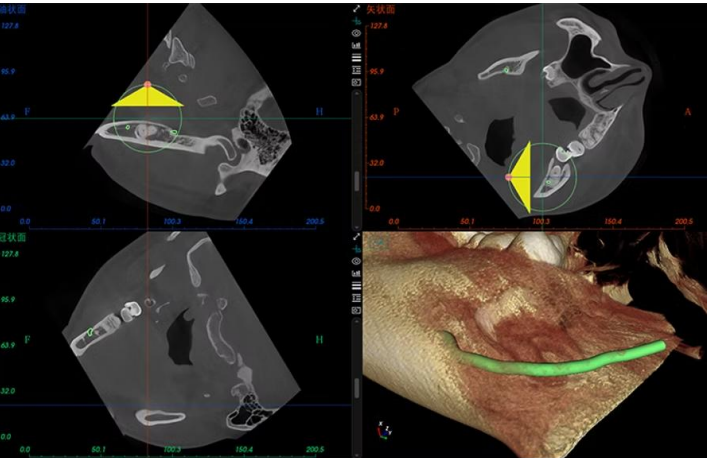
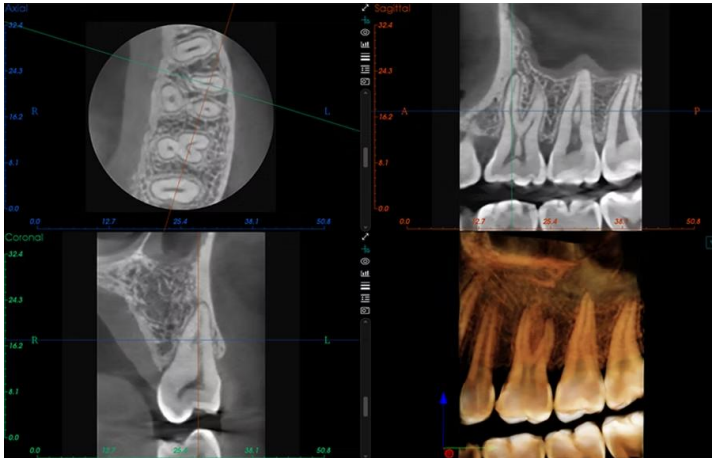
AI
ARTIFICIAL
INTELLIGENCE



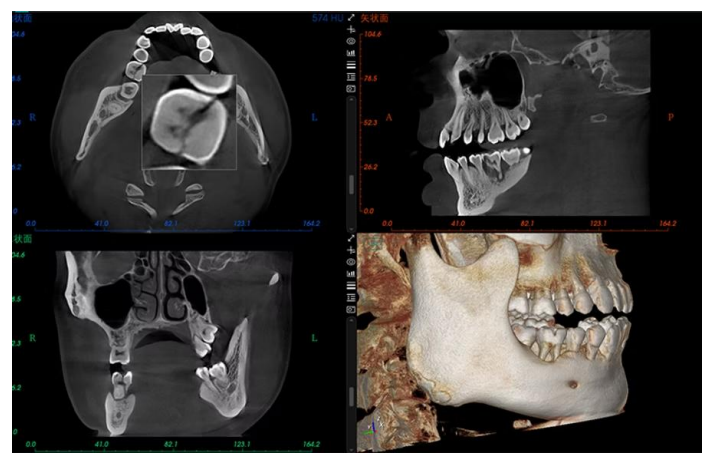
AI
ARTIFICIAL
INTELLIGENCE



AI
ARTIFICIAL
INTELLIGENCE



AI
ARTIFICIAL
INTELLIGENCE



AI
ARTIFICIAL
INTELLIGENCE



COXO INTRA ORAL SCANNER

Now From
R 59,900



BITE YOUR TEETH INTO TECHNOLOGY ✦



Professional Dental Manufacturer



Now with
Implant Scanning
Module !!

Now with
Edentulous Scanning
Capability

Most Affordable, Branded
3D IntraOral Scanner in
South Africa for sure !!



R 59,900



R 64,900

Now with Trolley for
Mobility, excludes Accessories

First 3 customers



R 84,900

Now with Msi i7 Gaming
Laptop with Software

First 3 customers

- Jaw Scanning Time:30s
- Scanning Accuracy:10µm
- Camera Size:220*36*34mm
- Weight:180g
- Scan Head Size:
- Standard:20x17mm ;
- Mini:17x14.5mm
- Depth Of Field:0-18mm
- Light Source: LED
- Window Size:17x15mm
- Number Of Frames:30fps
- Scanning Software
- Output file as .stl or .obj or.ply
- Ai Reporting
- Model creator
- Scan, Record and Playback Feature
- Implant Scanning available now too !!
- Edentulous Scanning for partial dentures
- **Open System**
- **No Annual License Fees**



IDEAL MICROSCOPE AND LOUPE COMBO



Augmented reality

- Interactive experience of a real-world environment enhanced by computer-generated perceptual information spatially registered to the user's environment



3x/6x Magnification
4x/8x Magnification

The AR Magnifying Loupe merges augmented reality with advanced magnification, providing exceptional clarity for dental professionals.
With Microscopes the entire Complete system needs to move while AR Loupe is able to move Freely

Reduce Back & Neck Strain

Weighing only 250 grams, the headset allows for better posture without bending or squinting.

Ergonomic Comfort

Engineered for extended use, ensuring comfort during long procedures.

Zoom Functionality

Easily zoom in or out on fine details (options of 3x/6x or 4x/8x).

Compatible with Glasses

Designed to accommodate glasses for clear vision and comfort.

LED Lighting & Adjustable Color Temperature

Improves visibility for accurate diagnoses and precise color matching.

High-Resolution Imaging

Offers real-time high-resolution visuals for detecting fine cracks and enamel variations.

Real-Time Connectivity for Consultations & Training

Connect the headset to external displays like monitors, TVs, or projectors for enhanced viewing.



R59 900

Portable Xray Combo Deal

**CRAZY
DEAL**



**V-Light Premium
Digital Portable Xray System
HDR - Size One Sensor #1
FREE Sensor Positioner
FREE Back Scatter Radiation Shield
FREE Xray Apron
FREE Thyroid Collar
FREE HDR IntraOral Camera
With seamless integration with
sensor software**

First 3 Customers Only

R49 900

First 3 Customers Only



Portable Xray Only

**V-Light
Portable
X-ray**



**Free
Backscatter
Radiation Shield**



Tube Voltage	: 65kV
Tube Current	: 2.5mA
Focal Spot	: 0.4mm
Exposure Time Range	: 0.02-2s
Maximum Duty Cycle	: 1:30
Gross Weight	: 1.8Kg
Battery on Full Charge	: 500shots (0.5s)
Built in Smart Angulation	: Included
Dimensions (L300mm x W110mm x H250mm)	

R27 9000



Licence requires optional Xray Body Apron

**CRAZY
DEAL**

HDR 500 – Size #1
High Quality
IntraOral Xray
Sensor



CRAZY
DEAL

R 23,900

First 3 customers ONLY !!
Maximum One Per Customer Lifetime !
New Xray Sensor Customer ONLY !!
Terms and Conditions Apply
Size #2 available @ extra R1000



**CLEAR DENTAL SALIVA EJECTORS
WITH REMOVABLE BLUE TIPS
(100'S)**



**SPECIAL
OFFER**

SOLD OUT

Maximum 5 Pkts

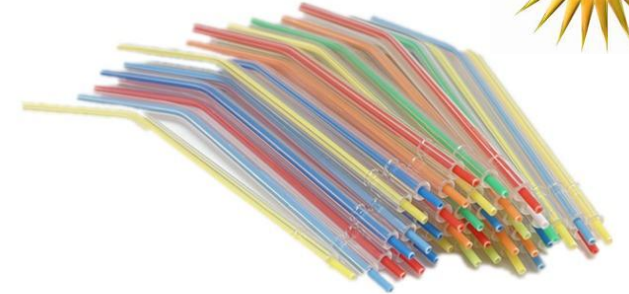
Nitrile Gloves (100's)



**SPECIAL
OFFER**

R59.90 **Maximum 5 boxes**

**DISPOSABLE 3-IN-1 SYRINGE TIPS
MULTICOLOUR (Packs Of 250pcs)**



**SPECIAL
OFFER**

R349 **Maximum 5 Pkts**

Cleaning brush (Bur and Forceps)



Pegasus Type Bur,
Instrument and
Forcep Cleaning
Brush

**SPECIAL
OFFER**

R99

**Max 2 per
customer**

Plastic Impression Trays (pair)



**SPECIAL
OFFER**

SET OF 2

**SMALL ONLY
Upper and Lower**

R34,90

550ml Lubricating Handpiece Oil



**SPECIAL
OFFER**

R179

**Expiry Aug 2026
Max 3 per customer**

VERICOM

CLEARANCE SALE

SPACER TEMP FILLING



Expires Jan 2026
BLUE / or YELLOW

R199

Max 2 per customer

**CRAZY
DEAL**

Denfil BULK Flow

Expire March 2026



R 349

- Optimum flowability and handling
- Low polymerization shrinkage
 - Nature-like esthetics by micro-hybrid fillers
 - Various shades and transparency
 - High radiopaque
- Available in Universal and B1

**CRAZY
DEAL**

U-BOND Ortho Bond

Expires March 2026

R 1,499

Max 1 per customer



<https://youtu.be/kGtqo1UyFU4>

Vericom U-Bond Ortho Light Cure Adhesive for attaching orthodontic bracket. It is designed to attach ceramic & metal bracket to a tooth, and its characteristic of color change after light-cure provides easy removal of remaining resin around the tooth.

**CRAZY
DEAL**

WELL PEX



2g syringe

R 499

Oil Based Calcium Hydroxide Paste
with Iodoform Injectable
Expires April 2026

Max 2 per customer

**CRAZY
DEAL**

CLEARANCE SALE ON ALL VERICOM PRODUCTS !!

DENTEX®

NEW



**UNBEATABLE
PRICE**

DENTEX DX.FLOW Dental Nano Flowable
Light Cure Composite Material

Advantages:

1. Excellent polishing feature and strength.
2. Radiopaque.
3. Fluoride releasing.

Packages:

2g*2(available as A1,A2,A3,),Tips*10

Available in different viscosities

High Flow

Super Low Flow

Perfect for to fill after enameloplasty and
micro enamel abrasion procedures too .

R199
Per syringe



5th Generation Bonding Liquid

**SPECIAL
OFFER**

R299

Max 2 per customer

BOND V dental adhesive is a single component for total etch technology. It can be used widely in dental clinic for all direct and indirect restorations. It also works well for enamel with total etching technique



Expires Aug 2027

Limited Stock , Get yours before they All Gone

DENTEX DENLINK Porcelain Fracture Repair Kit

Fix PFM fractures and chips , As well As Zirconium and Veneers



- *Porcelain Etch
- *Metal Primer
- *Zirconia Primer
- *Bonding Liquid
- *Metal Mask
- *Resin Repair Material

Expires July 2026

R1,999

Max 1 per customer



UNIVERSAL LIGHT CURING DENTAL RESIN

Direct restoration for all class caries.

Restoration of teeth defect and veneer.

Package:

Light Cure Composite: 4g/Syringe*5

(A1 A2 A3 A3.5 B1)

Syringe Needles : 5pcs/ box*1

Total Etching Adhesive: 5ml/Bottle*1

Etching Gel: 5ml/Syringe*1

Applicators Brushes: 20pcs/box*1

Net weight: 188.4g

Expires October 2027

R1,899

Max 1 per customer





NANO HYBRID

Ideal for Direct Composite Veneers

INDICATIONS FOR USE:

Direct restoration for all class caries.

Restoration of teeth defect and veneer.

Package:

Light Cure Composite: 4g/Syringe*

COLOUR: EA1,EA2,EA3, DA2,DA3,CL

Syringe Needles : 5pcs/ box*1

Total Etching Adhesive: 5ml/Bottle*1

Etching Gel: 5ml/Syringe*1

Applicators Brushes: 20pcs/box*1

Net weight: 188.4g

5 x Silicone Brush Set FREE!!
For the first 5 Customers



Expiry November 2027

R2,599

Max 1 per customer





DENTEX AIR-BLOCK STRIP Oxygen Isolation Gel



R199



DENTEX DX.Etch 37 Etching 10ml

R199

Available in

A1
A2
A3
B1
B2



DX.Universal/Anterior/Posterior Nano Hybrid Light Cure Composite is a light curable composite. It can be used for anterior and posterior dentine and enamel restorations. The inorganic filler loading is from 75 % to 82% by weight. The particle size varies from 0.03 to 5 microns.

DX. Universal

Light Curing Composite Resins family, the first choice for reconstruction of tooth defects.

DX. Universal Composite is a light curable composite. It can be used for anterior and posterior dentine and enamel restorations. The inorganic filler loading is 82% w/w

. The particle size varies from 0.002 to 5 microns.

Indications:

It is suitable for restoration of Class I to V cavities including tooth defect, inlay, veneer and core building up.

Advantages:

- High versatility. It takes care of either dentin or enamel restorations
- Moderate viscosity and non-sticky handling
- Excellent plasticity and great handling
- High radio opacity
- 2g Syringe
- Long Shelf life

R399



PACKAGE DEAL

Purchase All 3 items
for the Low cost of

R699

DENTEX®

SOLD OUT!

Indications:

Used for temporary filling for all class cavities, implant screw sealing, temporary filling the cavity for inlay/onlay or root canal treatments.



Indications:

Used for a single or multi temporary repairs in clinic
Used for temporary crown and bridge before permanent restoration
Inlay/Onlay and overlay
Available as A1, A2 and Bleach White

R1799

R899



Indications:

It is suitable for Core build up, bonding for crown, bridge, inlay/ onlay, filling for special deep cavity restoration



Indications:

Used for the Bonding of temporary Crowns , bridges, inlay/onlay. and overlay

R899



This product consists of double Intertwined polishing wheels. It is easy use for variety of applications. It can polish the areas where other wheels could not reach (e.g., occlusal surface). It works well for composites, glass ionomer and other materials without changing the original shape and damage to the polished material.

- 1.Coarse polishing
- 2.Moderate polishing
- 3.Fine polishing

R699

Max 1 per customer



Indications:

Composite restoration polishing and excess part removal, implant cleaning up, and polishing of inlay/onlay and crown restorations.



R799

Max 1 per customer

DEN CEM HANDMIX Self Adhesive Dual Cure Resin Cement

Indication for use :

DEN CEM II is suitable for cementation of crown and bridge which made of PFM or Zirconia. It is a liquid-powder form.

Advantages:

High bonding strength: Compare with glass ionomer cement, DEN CEM II has a good bonding strength and flexural strength.

Economic: One set can be used to fix at least 100 teeth. It is more economic in comparison with automix design

- **Chemistry Stability:** Liquid and powder are designed to be packed in separate bottles. The chemistry properties are more stable and can be stored in normal room temperature and no need of refrigeration

- Dual cure: Light cure and self cure for better choice
- Low solubility

Radiopaque

Fluoride releasing

Packaging Specifications:

Refill 8ml liquid + 15g powder Universal



Indications:

Applied to dentin as a protective liner from restorative materials, indirect pulp capping

Packaging:

Specification: 1.5g

Advantages:

- Light cure and easy to use
- Radiopaque
- Good physical properties
- Low solubility to water
- Good protection for pulp

R399

Max 2 per customer



R249

Max 1 per customer



Indications:

Suitable for temporary retention of removable dentures
Recommended usage: apply once a day before wearing



R1599

Max 1 per customer

Indications:

Fluoride Coating to increase the acid resistance of enamel and Prevent dental caries
0.5g x 50



Indications:

Seal the pits and fissures on the tooth surface to prevent dental caries.



R699

Indications:

Relieve the symptoms of tooth sensitivity caused by dentin exposure.

Max 1 per customer



R449



Before



After

DX. Whiten composite belongs to Enamel shade composite system. In clinic practice, two or three kinds of veneer whitening composites are used to repair veneer. The whitening simulation is successfully achieved with nature tooth appearance.

Indications: • Discolored veneer and composite inlay

Advantages: Three shades of stratified filling to rebuild the layering of tooth Ideal viscosity, easily to shape High simulation, natural esthetic

• Good polishability and durability Packaging

Specifications:

- Specification: 4g
- Shade: EXW (Exetreme white), EW (Enamel white), BL(Bleach)



Increased transparency from EXW to BL



Product Features:

The DENCOVER (Light Cure Liquid Polish), after light-curing, forms a smooth and glossy resin film on the surface of the resin, which can reduce the occurrence of surface staining on resin restorations.



Scope of Application:

Surface treatment of resin dental restorations.

R499

Max 1 per customer

Packaging Specification:

Specification: 3.0ml/bottle



Click links

Available online ONLY !!

www.magnificentcc.com

PRO IMPLANT / SURGICAL
MOTOR SYSTEM – FIBRE OPTIC



COXO®

Professional Dental Manufacturer
Excludes Handpieces



First 3 Customers Only

R29,900

Max 1 per customer ,
First 3 Customers receive FREE Trolley

SURGICAL IMPLANT
HANDPIECE FOR
ELECTRIC MOTOR
20:1



R6 999

Non Fibre Optic

R8 999

Fibre Optic

SURGICAL Fibre Optic
HANDPIECE FOR
ELECTRIC MOTOR
1:1



R7 999

EXTERNAL
IRRIGATION

50% Discount on Handpieces when Purchasing Motor

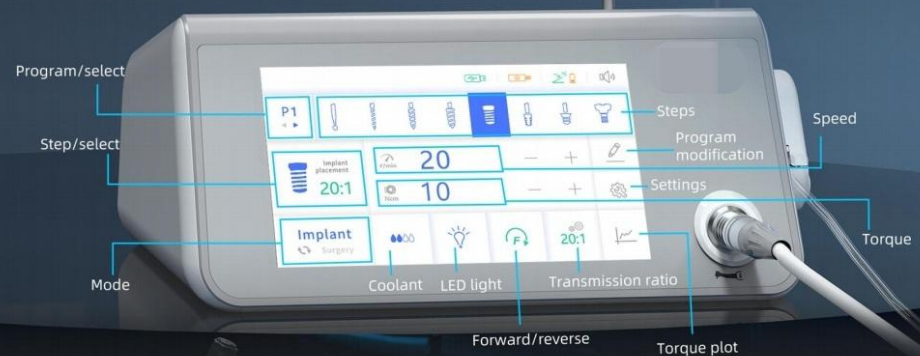
Now with
Free TROLLEY

1st 3 customers

Implant mode & Surgery mode 2 in 1

•Implant mode

12 Optional steps,
help you create your own planting process



5 Memorized Programs
Dentists can set 5 programs with different data



•Surgery mode

8 Different programs, meet all your need



DELUXE Electric Motor



R49,900

Free Handpieces

1 x 1:5 CA Red-Ring Fast Handpiece , or
1 X 1:4.2 Angled Red-Ring Fast Handpiece
and
1 X 20: 1 Contra-Angle Implant Handpiece

Max 1 per customer
First 3 Customers receive
FREE Handpieces

3-IN-1 MACHINE

Surgery XT-II



**IMPLANT MOTOR
SURGICAL MOTOR
PIEZO SURGERY**



Most versatile and packed equipment with small foot print
Big Variety of Dental procedures covered,
from Implants to Surgery, Restorative and Piezo Function –
its got it ALL !!

Wireless or Wired Foot Control (works both ways)

Includes :

Piezo Handpiece + Tips Included

1:5 Fast LED Handpiece

20:1 Implant LED Handpiece

1:1 Straight Surgical Handpiece Included

12 month Warranty



COMPACT
EASE OF USE
QUALITY PRODUCT

R 59,900

Limited to the First 3 purchased
In this Month

Maximum One Per Customer Lifetime offer !
Terms and Conditions Apply

MAX PIEZO SURGERY III

Ultrasonic frequency micro-oscillation of Max Surgery III is an ideal solution for minimally invasive surgery, ultrasonic osteotomy, and more dental diagnosis & treatment.

The Max Surgery Ultrasonic Surgical System has 4 modes: Bone Cutting, Periodontics, Endodontics Treatment, Cleaning and is equipped with various ultrasonic working tips for different applications.

Minimal incision 3.5mmx0.5mm and No damage to soft tissues are its remarkable features. Thus, ultrasonic bone cutter Also, help surgical dentists to accomplish a minimally invasive surgery precisely & effectively.

The ultrasonic bone surgery device helps to maintain patient comfort following the trauma of tooth extraction.

Also, it has autoclavable highly efficient handpiece, multi-function pedal for water volume adjustment, mode switching, power adjustment and autoclavable cable to avoid cross-infection.

R39,900

Includes Handpiece
& Piezo Tips



Max 1 per Customer

PERIOSTEAL SOFT BRUSHING KIT



The concept of the Soft Brushing technique is to softly disrupt the organization of the collagen fibers of the fibrous periosteum so they can be displaced apically off the bone exposing the roots and bone. The Brushes in the kit reduce the stiffness of the fibers that permits the flap to be reflected and released only by using the Brushes.

R1,999

10 Pc COMPOSITE FILLING & SCULPTING KITS



High Heat Silicone
Strong Teflon coated
High Quality Product
Stainless Steel

**CRAZY
DEAL**

R1,499

FREE SILICONE SCULPTING BRUSH KIT
Includes the Stainless Steel Cassette

MICRO PERIODONTAL SURGERY KIT



1 X Bone Surgery 3 Pcs set
1 X Castroviejo Scissors 14 cm TC STR
1 X Castroviejo Needle Holder Lock 14 cm TC
1 X Micro Forceps 14 cm
1 X Surgical Scalpel Handle Rotatable 180 Degree
1 X Micro Surgery Scalpel Handle
1 X Minnesota Cheek re-tractor
1 X Mouth Mirror with Handle
1 X Stainless Steel Instruments Organizer Cassette

R1,999



Universal Screwdriver Kit

R1950



Tissue Punch Bur Kit

R1750



Surgical Implant Drill Kit with Wrench

R2950

**CRAZY
DEAL**

**Implant Drill Kits
On Promo !!**

Max 1 per Customer

NEW RELEASE

**COMING
SOON**

Watch
this
space

PRF CENTRIFUGE



Includes 20 pcs Tubes for PRF Free

R 14,999

**COMING
SOON**

Watch
this
space

CRAZY

DEAL

SOLASE Laser
Limit-less **S**MART

**DON'T
MISS
OUT!**



SOLASE Dental Diode Laser



All Attachments optional Extra !

LAZON
LAZON Medical Laser



**YEAR
end SALE**

LAZON
LAZON Medical Laser

Excludes Phone

Now Supporting Android and IOS

Tether your phone to the unit

No need for a separate phone.

Includes:

- Wireless Foot control
- Upgraded Laser Handpiece Attachment
- FREE Assorted Laser Tips (200um, 300um, 400um)

R 59,900

HYDRUMP[®]

GOLDEN RING PUSH BUTTON HIGH SPEED HANDPIECE



Premium
Quality



HYDRUMP

- Exclusive Gold Finish
- High Quality
- Superior Cutting Efficiency
- 3 month Warranty on HYDRUMP ONLY
- German Ceramic Bearings
- Premium Product
- AAA Quality



NEW
ARRIVAL

Only R3990

**FREE Le'ART Coloured Handpiece, Oil
and Set of Crown Prep Burs ,
T's and C's Apply**

5th Generation 6LED Premium Shadowless Fast Turbine Handpiece

- High Performance LED Handpiece
- 6 LED Shadowless Light Projection
- 6 Spray Nozzles
- High Torque with Excellent cutting efficiency
- Light and comfortable
- Reinforced Body and casing
- Strong Ceramic Bearings
- A Quality
- Affordable and Value for Money
- 3 Month Warranty



The Workhorse of the Dental Surgery



- Get 1x Free 550ml Oil , 1x FREE Matrix Kit,

**CRAZY
DEAL**



Now only : R2990



Max 2 per customer



NEW
ARRIVAL



ART STUDIO



Only R1290

Available in Blue and Green

* 1month Warranty *Ts & Cs Apply

Caries at a glance

A tool to achieve your treatment goals!



Fast handpiece with caries Detection function .

Features of Caries Detection Handpiece :

- Ceramic bearings
- 8 cooling jets
- 4 water cooling , 4 air cooling
- 4 hole attachment to Midwest tubing
- NSK Type Quick Connector



PACKAGE DEAL

PREMIUM HANDPIECE PROMO SPECIAL #1
PURCHASE 3 X FAST TURBINE 3rd GEN LED..
AND GET 1x Slow Set FREE + 3x Matrix Kits + 3x OIL FREE



R8,999

*1 month warranty



Contra Angle
available as latch type ONLY !
5 packs Prophy Brushes Free
Mix and Match the shape



3 Free Matrix Kits



3 Free OIL

HANDPIECE PROMO SPECIAL LIMITED TO 1 SPECIAL PER CUSTOMER- FIRST 10 CUSTOMERS ONLY

PREMIUM HANDPIECE PROMO SPECIAL #2

PURCHASE 1 X FAST TURBINE 3rd GEN LED

AND GET 1x Slow Set FREE + 1x OIL FREE



R4,999

*1 month warranty

PACKAGE DEAL

=



+



Contra Angle available as latch type ONLY !
2 xFREE Packs Prophyl Brushes included

1 Free OIL

HANDPIECE PROMO SPECIAL LIMITED TO 1 SPECIAL PER CUSTOMER- FIRST 10 CUSTOMERS ONLY

Xray Sensor Sleeves



Jumbo Pack, 500 pcs
Limited to 1 per
Customer/Practice
Price valid on delivery
Orders

R499,90

Slow Set Handpiece Kit

R1,799



Latch Type Only
Price valid on delivery Orders
Max 2 per customer ,No Warranty

Dental Prophyl Brushes



R49

Cup Shaped /
Flat Shaped
Multicolour
Animal Free
Pkts of 12pcs



R39

Max 10pkts
Each type

Matrix band Kit



R199

Max 3 per customer

Latch or
Push
Button



R 599

Max 2 per customer
No warranty

AIR POLISHER SYSTEM



Supragingival Cleaning
Interdental Space Cleaning
Subgingival Cleaning
Orthodontic brackets Cleaning
Air polishing after Scaling
Preparation to bond Ortho Brackets
Implant and Abutment Cleaning
Stain Removal and Smoothing
Preparation for Bleaching
Tongue and palate Cleansing
Versatile



SIMILAR TO i-JET

Prophy Jet is a must-have device in every dental office due to its wide application and benefits in dentistry. The device is versatile, efficient, and gentle, and provides a comfortable experience for the patient. Investing in a Prophy Jet will not only improve the quality of dental care provided but also save time for both the dentist and the patient. The device is also an excellent investment in the long-term oral health of patients. Dental professionals should consider adding the Prophy Jet to their arsenal of tools to provide the best possible care to their patients.

R3,950

Arm Automatic Blood Pressure Machine



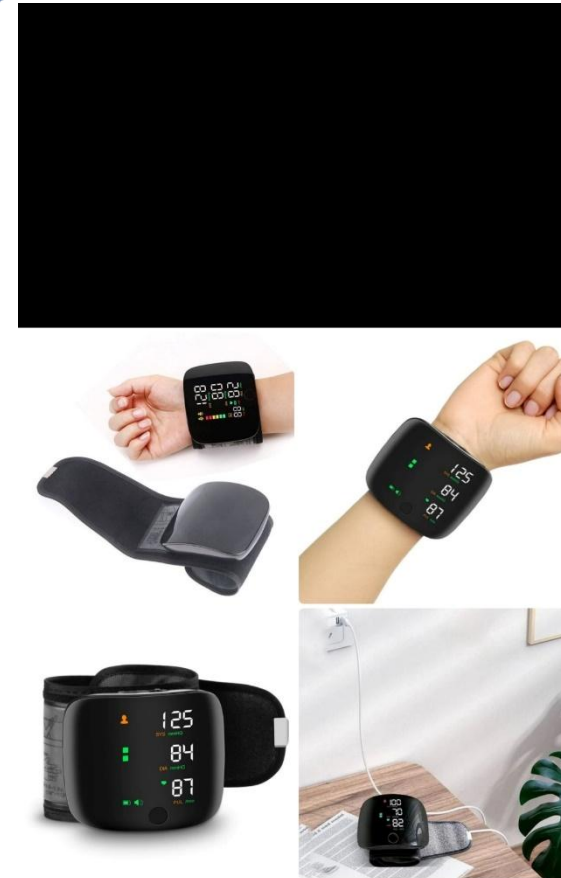
White in colour
Voice over speaker
Touch Button
LCD display
USB charging
Req. AAA Batteries

Purchase and get a
FREE
PULSE OXIMETER



R399

Wrist Auto BP Machine



Voice over speaker
Black in colour
LED touchscreen
USB Charging

Purchase and get a
FREE
PULSE OXIMETER



R599

COXO[®]

Professional Dental Manufacturer

**NEW
ITEM**

**+2x Handpieces, Scaler Tips,
Abrasive Powder &
Wireless Foot Control**

Ultrasonic Scaling
Implant and Ortho Maintenance
Minimally invasive Restorations
Perio/ Endo Treatments
Air Polishing and Abrasion

Purchase this month for :

R44 900

PROFESSIONAL Periodontal
Air Polisher System
PT MASTER
With
Wireless Foot Control





Promotional Price : R49 900
Built- in Led Scaler & Curing Light

Optional Extras FREE With Deal

Auxiliary Air/Water Quick Connector

Auxiliary Air/Water Valve

Auxiliary Built In Power Socket

Internal Spray Contra Angle

**MOBILE SELF CONTAINED DENTAL
DELIVERY UNIT incl Compressor**

**First 3 Customers for Receive FREE LED Fast Handpiece and Internal water Slow Set
(valued @ R6000)**

Anaesthesia

ANXIETY



UNINSTALLING...

R4,990

Metric and Imperial
Needle Connection

**CRAZY
DEAL**

Oral Anesthesia Injector



New Computer Controlled Anaesthetic Pen
Anxiety Beating / Stress Free Treatment

Screen:

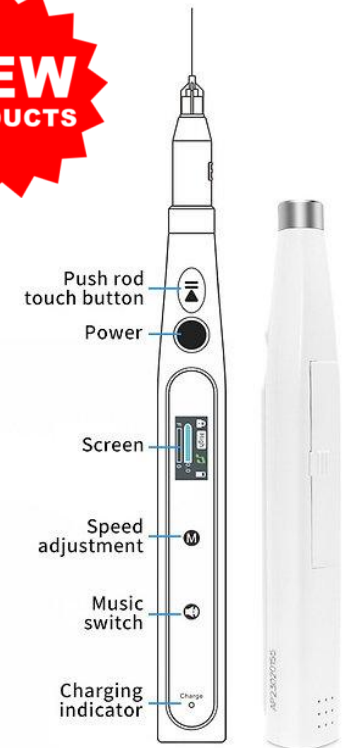


1. Lock screen symbol
2. Speed adjustment
3. Music switch
4. Battery indicator
5. Injection dosage
6. Dynamic pressure feedback

Battery charging:



**NEW
PRODUCTS**



Now with Music option , Audible Chime and Voice activated dispensing prompt
Be that Dr. with the latest and most modern equipment, Your patient will love it and Praise you !!

Curing Lights

Max 1 per customer
First 3 Customers on each

SWAN 1sec Curing Light - Broad Spectrum Led - Premium Exclusive

- Constant Current Drive
- Wireless
- Dual Intensity Mode
- Hygienic
- Broad Spectrum Led-
Wavelength 385nm - 515nm

Features:

Dual intensity mode:

•P1 High intensity mode
Constant intensity: 2300-
2500mw/cm2

•P2 General intensity mode

Constant intensity: 1000-
1200mw/cm2

Broad-spectrum : Curing most materials

Ability to cure new photoinitiators
in the latest Composite resins.



R4,999 Max 1 per customer
First 3 Customers

Max cure 9 Wireless Curing Light 2000 MW/cm3

**NEW
PRODUCTS**



Light power more than 2000mw/cm².
3 Distinct Modes: Strong, Flashing,
Gradually strong.
2600 mAh Large-capacity lithium battery.
5W Big power LED.
Full charging available use more than 200
times.
Automatic Standby/Automatic shutdown.

R1,999

Maxcure 5 Wireless Curing Light 1800 MW/cm3

Power Input: 100-240VAC, 50Hz/60Hz
Power Output: 5V DC/1A
Wave length: 420 nm-480 nm
Light intensity: 1000mW/cm² – 1800mW/cm²
Battery voltage and capacity: 3.6V/2600mAh
Battery model ICR 18650-2600mAh



R1,899



Curing Light Promo

High Power
1s or 5s
Tips included:
Orange tip-carries
Green Tip – Fracture
Spot Cure
Long tip Cure and
various other tips
Magnetic attachment
to the head

R1,599



Curing Light Promo

Magnificent Branded

- High Power
- 1s or 5s
- Vibration feedback
- Metal Housing
- Metal Base
- Limited Edition Black

R 1399

Max 1 per customer
First 5 Customers

DISPOSABLE CHEEK RETRACTORS



R29.90
Single Packs

- Latex Free
- Allows Lips and cheeks to be fully Isolated
- Flexible and comfortable
- Single Use
- Medium Size
- Available as 20pcs per box

R478
Packs of 20pcs



Buy A Box and save 20%

DENTAL NOLA DRY FIELD CHEEK/LIP RETRACTOR SUCTION SYSTEM



Used In Various Oral Treatment Scenarios Such As Pit And Fissure Sealants,
Posterior Restorations, Bonding Ortho Brackets, Teeth Bleaching /
Whitening

- Dry Field System keeps the mouth dry while isolating arches from tongue and cheeks.
- High-heat plastic and silicone construction autoclavable to 135 degrees
- Great for sealants, ortho bonding, and posterior restorations
- Combined into each appliance is an adjustable cheek retractor, saliva ejector, tongue guard and low-volume suction connection.
- Specially designed not to cover occlusal surfaces of the teeth.

R990

- Launch Offer –
- Max 2 per Customer



Rubber Dam Promo Deal

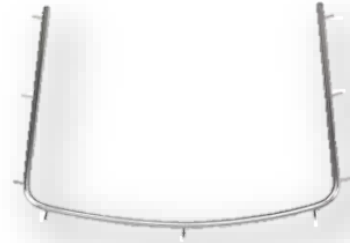
Buy the Rubber Dam Kit and
Receive the Box of Rubber Dam Material for FREE

RUBBER DAM CLAMPS x 6

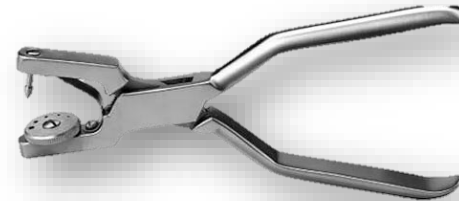


2x Anterior
2x premolar
and 2x molars

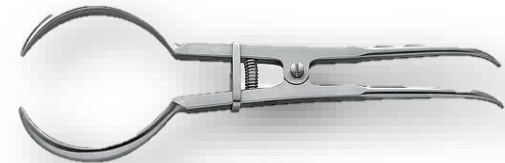
RUBBER DAM FRAME x 2



RUBBER DAM PUNCH



RUBBER DAM CLAMP HOLDER



R1999

Available as :
5 x 5 in BLUE (52 sheets) or
Available also in 6 x 6 in GREEN (36 sheets)

Max 1 per Customer , 1st 5 Customers Only



Xray Positioner Kits



- Aligns film to prevent cone cutting
- Rounded bite blocks with no sharp edges improve comfort.
- Open bite block design offers patients a soft bite
- New bitewing shape with same-arch biting for a more closed bite

R1999



Excellent Sensor Protection, For digital sensor with line
The clamp size can be adjusted for different imaging plates
1, (Green) For right maxillary upper premolar/molar and left mandibular
2, (Blue) For left maxillary premolar and right mandibular premolar/molar
3, (Yellow) For maxillary/ mandibular incisor -Anterior teeth

R 999

Twin Lights Oral Photography



Use with your
cellphone

SOLD OUT

IntraOral Photography Contrast Kit



R1,499

IntraOral Photography Mirror Kit



R1,299

RING Light Oral Photography



Now with Macro Lens
And Polaroid Filter
Use with your cellphone

R1,999

Black Contrast Cheek Retractor Twin Size



R480 Sold as Pair

Anti – Fogging Mirror Kit with Mirror Attachments



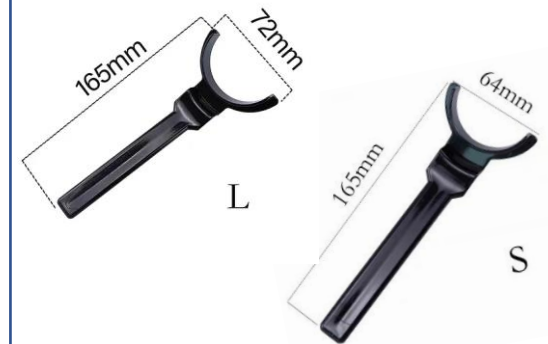
R1,799

Black Contrast Twin Lip Retractor



R280
Small or Large

Black Contrast Front Lip Retractor



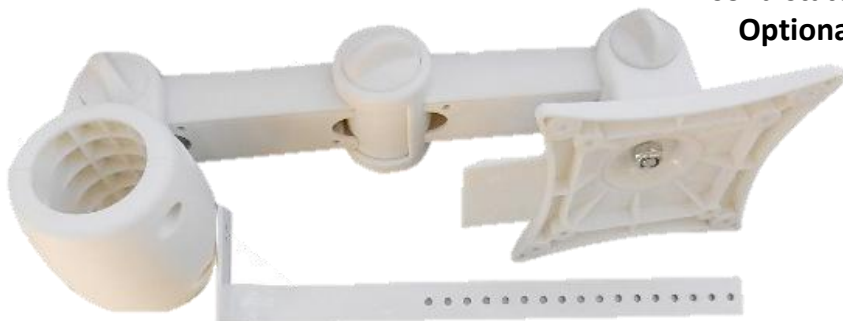
R380
Sold as Pair Small or Large

**Intra Oral Camera System with
17" Monitor + 12 MP Camera**



R9,900

1. Upgraded 17inch Monitor
2. 1/4 CMOS high resolution 12MP intraoral camera
3. Built-in 4pcs high brightness long-life white LEDs
4. Integrated image software and with dentist management software



**Intra Oral Camera System With Integrated Computer
Touch Screen + I5 Integrated Computer + HD Camera**



R19,900

1. Upgraded Wi-Fi + 23-inch touch computer screen all-in-one, can be operated by finger directly, or onscreen keyboard
2. 1/4 CMOS high resolution 720p intraoral camera, high performance
3. Built-in 4pcs high brightness long-life white LEDs
4. Dentist management software

23-inch HD touch screen WIN10 32-bit flagship edition
processor Intel Core i5 CPU installation memory (RAM) 8GB/128GB
solid state disk 32-bit operating system built-in Wi-Fi
Optional Wireless Mouse and Wireless Keyboard

**CRAZY
DEAL**

**Intra Oral Camera System With Integrated
Computer Touch Screen + I5 Integrated Computer
+ 4K Camera With Smart Auto Focus**



R27,900

1. Upgraded Wi-Fi + 23.8-inch touch computer screen all-in-one, can be operated by finger directly, or onscreen keyboard
2. 1/4 CMOS high resolution 1080p intraoral camera, high performance and auto focus.
3. Built-in 6pcs high brightness long-life white LEDs
4. Running 3D image software and with dentist management software

23.8-inch HD touch screen WIN10 64-bit edition
processor Intel Core i5 CPU installation memory
(RAM) 8GB/128GB solid state disk 64-bit operating system
built-in wireless network card Cable socket +HDMI+VGA+USB

FREE OFFER:

Receive Free Intraoral Monitor Arm To Attach To Dental Chair

Implant UV Activator



It can use vacuum ultraviolet rays to catalyze and activate the surface activity of implants

- Improve the rate of osseointegration
- Shorten the time of bone healing
- Accelerate the clinical osseointegration of dental implants and improve the success rate of dental implants.
- Improve bone contact rate(BCR)
- The BCR of Non-activated implants is about 50-60% and activated implants can increase to over90%
- Shorten dental restoration time
- Dental restoration time: Reduced from 3 months to 1 month
- Expanding implant adaptation
- Improved implant success rate for high-risk dental treatment
- Rapid activation - Activation only takes 10s
- Ozone sterilization Built-in ozone filtration to prevent leakage
- Vacuum UV
- Ultra High Implant Compatibility (S, L, M1.4, M1.6, M2.0)

R79,900

Implant Stability Meter

Grand Launching Offer

It is a stability measuring device that uses tapping method, which measures the time of the Tapping Rod of the device contacting the implant. Used for for dentistry and dental implantology or oral cavity, or abutment, to measure the stability .

The result of the measurement is displayed in iST scale (implant Stability Test), which is the numerical representation of the Implant Stability Test (iST) value, and higher scale represents greater implant stability or lower implant mobility.

Characteristics

Convenient usage due to small and light design

Easy to use due to simple controlling method

Fast measuring time less than 3 seconds

Safe measurement due to slight tapping technique and auto safety system (tapping stops after tapping twice when Osseointegration is unstable, otherwise taps up to 6 times.)

Available to check possibility of implant failure at in earlier stages

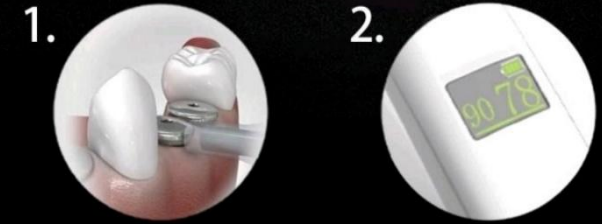
This model is much simpler to use than the NSK model. With the NSK model, you need to install a probe on the implant first. With this model, you can see the ISQ value on the display screen by gently tapping the implant. From the numerical value Determine the stability of the implant.

Implant Stability Meter New Product Launch

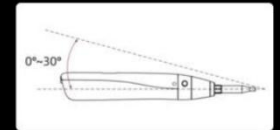
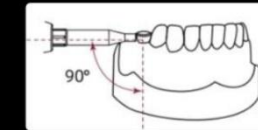


R24,900

2-step procedure

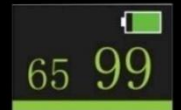


1. Carefully position the tip of the Tapping Rod to the upper edge of the healing abutment while being cautious not to push the abutment. When the Tapping Rod of the handpiece is located 90 degree from the side part of the top of the healing abutment and the ON/OFF switch is pressed once, the tapping motion starts after 0.5 second.



Remarks: The measured stability value is more accurate when the degree between the healing abutment and the Front Guide is closer to 90 degree. Maintain the contact angle within the range of 0° ~ 30° to upward when measuring. Due to the different bone widths in different directions of the implant, the measurement data will be biased. Try to measure the stability value from multiple angles to get a reasonable value.

2. An ISQ value is generated and shown on the LCD display. This reflects the level of stability on the universal ISQ scale -from 1 to 99. The higher the ISQ value, the more stable the implant.



If ISQ value appears as Red (01 to 59), the stability is not up to the standard.

If ISQ value appears as Yellow (60 to 64), the stability reaches the benchmark value.

If ISQ value appears as Green (65 to 99), the stability is good.

Remarks: Number of tapping: Tap 2 times until the measured value of 1~59. After 60~99, the device taps 6 times in order to measure the stability.

Implant Locator



R8,900

- Handy Piece of equipment in Implant Dentistry
- Especially for 2 stage dental implant Surgery
- Can have a minimal invasive uncovering of the implant with the Locator
- No more Guess Work !
- Work faster , easier , simpler and smarter !!

Price



We Cutting Prices – Rock Bottom !
Cheapest in SA Guaranteed !!



Super Suction Deals

Semi – Wet Suctions
High Quality and Efficiency
Built in Air/Water Separator
No extra tank required
12 month Warranty
Cost Effective . Affordable Solution

JW-X01- 1 Chair

Voltage (V): 220
Frequency (Hz): 50/60
Power (W): 400/500
Max Pumping (l/min): 800
Vacuum: -110
Net/Gross(kg) : 18/20
Size (mm) : 310*450*590
Noise (dB) : 53

R 25,900

JW-Y01- 1/2 Chair

Voltage (V): 220
Frequency (Hz): 50/60
Power (W): 700/800
Max Pumping (l/min): 1000
Vacuum: -130
Net/Gross(kg) : 25/30
Size (mm) : 310*450*635
Noise (dB) : 53

R 29,900

JW-X03- 3/4 Chair

Voltage (V): 220
Frequency (Hz): 50/60
Power (W): 940
Max Pumping (l/min): 1500
Vacuum: -150
Net/Gross(kg) : 36/44
Size (mm) : 385*485*615
Noise (dB) : 57-62

R 39,900

JW-W03- 4/5 Chair

Voltage (V): 220
Frequency (Hz): 50/60
Power (W): 1100
Max Pumping (l/min): 1800
Vacuum: -200
Net/Gross(kg) : 38/46
Size (mm) : 385*485*615
Noise (dB) : 58-62

R 49,900

Stainless Steel Cassette + 10 Hand Instruments



12 Pc Set

- 1 x Mirror Handle
- 1 x Mirror Head (regular)
- 1 x Explorer
- 1 x Perio Probe
- 1 x Thymosin
- 1 x Ball Burnisher
- 1 x Cord Packer
- 1 x Mixing spatula
- 1 x Excavator
- 1 x Plugger
- 1 x Gingival Margin Trimmer/ Flat Plastic
- 1 x Stainless Steel Cassette

R999

Max 1 per customer
Once Off Deal !!
Trial Offer Only !!

**CRAZY
DEAL**

CHEAPEST PREMIUM MULTI LAYERED Re-Useable DIAMOND BURS

R89,90 per pack of 5.

BC-31



BR-31



BR-41



FO12



FO-29



FO-32



EX-21EF



SI-48



SI-47



SI-46



SR-11EF



We are the Cheapest for this QUALITY product in SOUTH AFRICA -UNDISPUTED !!!

WE WIN HANDS DOWN-MAXIMUM 3 OF THE SAME PACK SHAPED BURS PER DEAL !!!

TC-10



TC-21



TF-11



TF-12



TR-11



TR-12



TR-12F



TR-13



WR-13C



WR-13



TUNGSTEN CARBIDE BURS

PRICED IN PACKS OF 5 PCS

FG2



R299

FG4



R299

FG56



R199

FG330



R199

FG557



R199

FG1158



R199

FG1931



R339

FG1958



R339

FG2058



R339

FG7204



R359

FG7406



R359

FG7901



R359

FGXL4



R299

FGXL557



R299

HP6



R239

HP35



R239

HP700



R239

RA2



R299

RA4



R329

RA8



R359

RA557



R229

RAXL2



R299

RAXL4



R299

CROWN CUTTING BURS MULTI-LAYERED- FOR EXCELLENT CROWN PREPS



MULTI-LAYERED INTERDENTAL STRIPPING BURS



SR-11c
(Course)



F0-21c
(Course)



**DON'T
MISS
OUT!**

R499

Pack of 5 Pcs

*Prep Like
a Boss!*

High Quality Premium Multi-layered
Re-useable Diamond Burs



ORTHODONTIC
WIZARD !!

R499

Pack of 5 Pcs

Diamond Burs - 392-016F Inter
Dental Stripping Bur

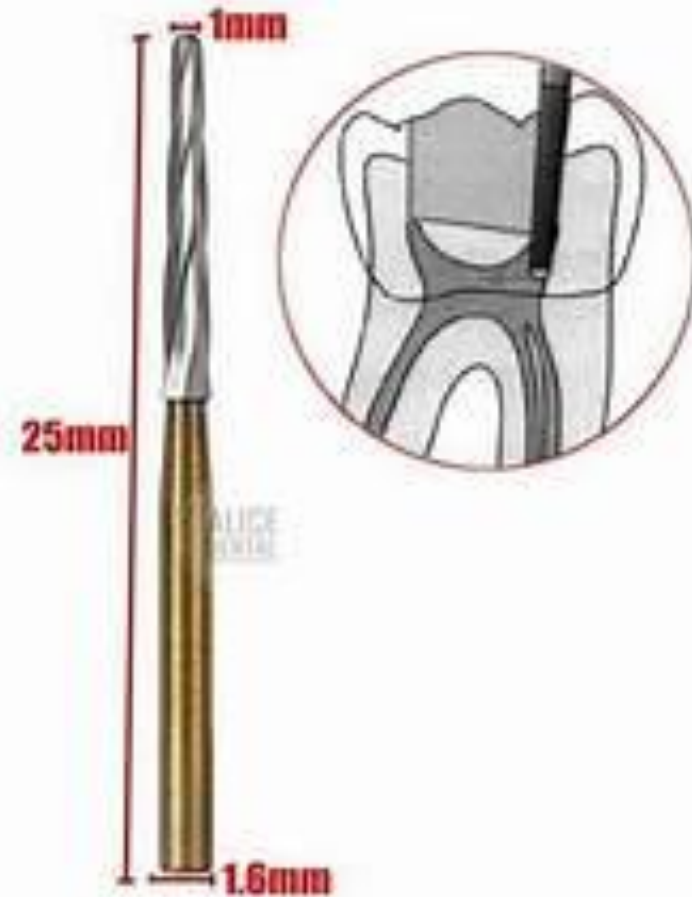
New Product !!
Carbide Bur FG-152XL
Endo Z – 25mm
Gold

Used in Endo –
Pulpal Floor Protection



152

R499 (5pcs)



High Quality Carbide Burs

PREMIUM DR STOOL

NOTICE :

**These are Premium Stools With
Metal Legs and
Premium Castors**

Colours:

Turquoise, Dark Blue , Yellow & White

Similar to Illustration

**DON'T
MISS
OUT!**

R3,999



PREMIUM ASSISTANT STOOL

**DON'T
MISS
OUT!**

Similar to Illustration

R1,999



PREMIUM DELUXE DR SADDLE STOOL

**LIMITED EDITION
SADDLE DESIGN
ERGONOMIC
COMFORTABLE
STYLISH**

Colours:

Lime Green & White

Similar to Illustration

**DON'T
MISS
OUT!**

R5,999



**Various Colours
Max 1 per Customer
Last few Remaining
Get Yours !!!**

EXCLUSIVE

PURCHASE

**Xray
Sensor**

**CRAZY
DEAL**

HDR 500 - Size #1



R 23,900

Includes :
Regular Single user
version software
Free License and Registration
Great Deal !!

HDR 600 - Size #2



R 24,900



**INTRA ORAL
CAMERA**



USB connection
High Quality Intra Oral Photos
Optional Network/ twain
Version

R5 999

**X-RAY
LEAD APRON**



**X-RAY
THYROID COLLAR**



Buy the combo deal
For Only

R4,999

ROOM ATOMISER
(360 DEGREES)



**CRAZY
DEAL**

ANION
DISINFECTANT
SPRAY GUN



Purchase any EXTERNAL DENTAL SUCTION and get the
ROOM ATOMISER and ANION DISINFECTANT GUN for R1999

EXTERNAL
DENTAL
SUCTION
v.1.0

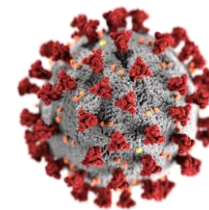


R7 900

EXTERNAL
DENTAL
SUCTION
v.2.0
LCD



R8 900



**A CLEAN
WORK AREA
IS A
SAFE
WORK AREA**

VIRUS  BUSTERS



Purchase the UV CABINET and get
The UV LAMP & OZONATOR FREE



**AMAZING
DEAL**



R 6 999

WHAT'S
NEW

Endodontic Extravaganza



Sonic Irrigator + 30 Tips
Flexible polycarb tips

R2,990



R5,900

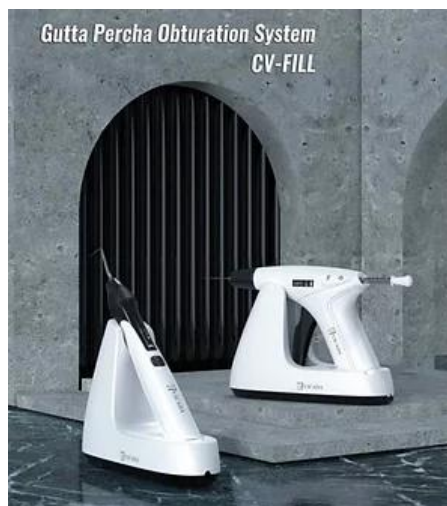


25 capsules of the Dual Purpose
Patented Twin Kleen Irrigating
Solution FREE with Sonic or
Endo Sonic Irrigators



New version
Integrated Endo
Motor + Apex Locator

R12,900



Warm GP Obturation
System

R9,900



Root canal irrigation and
suction system

R9,900



Endo File Retrieval System

R6,900

2 in1 Buy the Endo Motor With Apex
Locator and receive
FREE SONIC IRRIGATOR
With 30 Tips



Twin Kleen Single Step Root Canal Disinfectant

Twin Kleen is an additive to endodontic irrigating solutions For all endodontic procedure during root canal instrumentation and as a final rinse solution.

Expire Jan2025- Free
With every File Set Bought



25's

Compatible with sodium hypochlorite

Endodontic

**WHILE
STOCKS
LAST!**

Extravaganza

GP CUTTER + TIPS



Tips Available
separately for R499

R999

V-TAPER FILES



R399

M3L LARGE TAPER GOLD FILES



R399

M3L PLATINUM FILES



R399

2 x FREE BOX Twin Kleen Single Step Root Canal Disinfectant

ENDO IRRIGATING NEEDLES

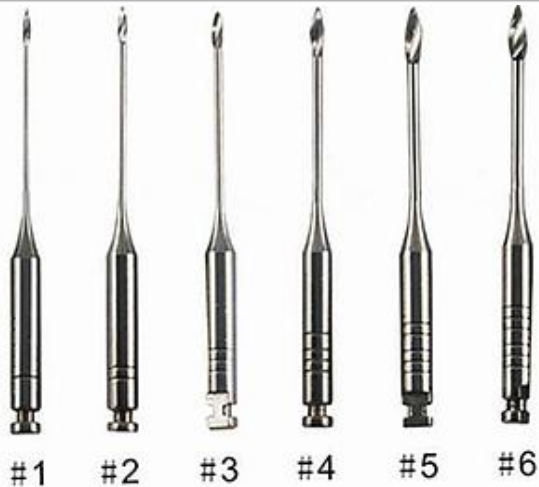


27G / 30G Box of 100's

R199

Maximum 1 of each
100 pcs in a box

GATES GLIDDEN ENDO DRILLS



R399 6 assorted sizes

ENDO H FILES



6 assorted sizes

ENDO K FILES



6 assorted sizes

SURGICAL BLADES



#10, #15
#21, #22

SOLD OUT

DISPOSABLE SYRINGES 3ml



R 1.99

DENTAL GINGIVAL RETRACTION CORD



R 99

FIBRE POST REFILLS ONLY



Available as
kit with drills
for R699 each

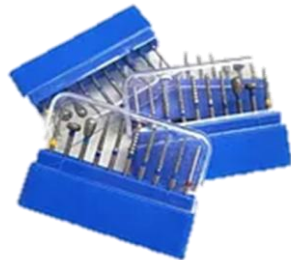
R 299
20 Pcs



AUTOCLAVABLE BUR HOLDER



16 HOLE
SETTING



Buy 5 get
1 FREE
Bur Kit

R 299

SILICONE RUBBER MOUTH PROPS



R 299 each

AUTOCLAVABLE ULTRASONIC SCALING KIT



R1,999

**NEW MODEL NP CLASS
STEAM STERILIZER**

R29 900



**Manual Water Filling
FREE WATER DISTILLER**

**REGULAR N CLASS
STEAM STERILIZER**

SOLD OUT



Manual Water Filling

**REGULAR NM CLASS
STEAM STERILIZER**

R23 900



Automatic Water Filling

**WATER DISTILLER
(WHITE)**



R2499

WATER DISTILLERS (WHITE)

ULTRASONIC CLEANER

INSTRUMENT SEALING MACHINE



+



+



**Buy the Combo
Safety Deal !**

R12,490

18L B CLASS AUTOCLAVE



R44,900

**DON'T
MISS
OUT!**

23L B CLASS AUTOCLAVE



R49,900

10L HAETMED B CLASS
A50B AUTOCLAVE



SUPER FAST CYCLE

R149 900

+FREE DISTILLER (White)
+FREE SEALING MACHINE
+FREE ULTRASONIC BATH

PREMIUM
WATER DISTILLER
(STAINLESS STEEL)



SOLD OUT

INSTRUMENT
SEALING MACHINE

**DON'T
MISS
OUT!**



R5 999

ULTRASONIC BATH



R4 999
3.2L

STERILIZATION ROLLS



50mm X 200M - **R799**
75mm X 200M - **R999**
100mm X 200M - **SOLD OUT**
200mm X 200M - **R1 999**

FORCEPS

R299

Buy 5 AND get 1 Absolutely FREE !!

LOWER PREMOLAR

F13



LOWER MOLAR

F22



LOWER ROOTS

F74



LOWER ANTERIOR &
PREMOLAR

F75



LOWER COWHORN

**F86A/
F86C**



UPPER ANTERIOR

F1



UPPER CANINE &
PREMOLAR

F7



UPPER MOLAR (RIGHT)

F17



UPPER MOLAR (LEFT)

F18



UPPER MOLAR
UNIVERSAL

F18A



UPPER ROOTS

**F51/
51L**



UPPER MOLAR
COWHORN (RIGHT)

F89



UPPER MOLAR
COWHORN (LEFT)

F90



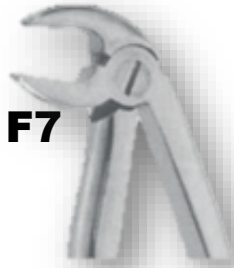
PAEDO LOWER
MOLAR UNIVERSAL

F6



PAEDO LOWER
INCISOR

F7



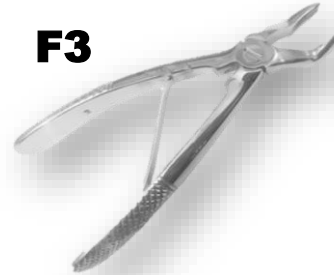
PAEDO LOWER
ANTERIOR

F162



PAEDO UPPER
MOLAR UNIVERSAL

F3



PAEDO UPPER
ANTERIOR

F39



PAEDO UPPER
INCISOR

F139



ELEVATORS

R299

WARWICK JAMES
(LEFT TO RIGHT)



WARWICK JAMES
(RIGHT TO LEFT)



WARWICK JAMES
(STRAIGHT)



Buy the Right and Left and get the Straight FREE !

COUPLAND ELEVATOR
(MEDIUM)



COUPLAND ELEVATOR
(SMALL)



COUPLAND ELEVATOR
(LARGE)



Buy the Medium and Small and get Large FREE !



CRYERS LEFT
AND RIGHT

LONDON HOSPITAL RIGHT AND LEFT
LONDON HOSPITAL STRAIGHT



Buy the Right and Left and get the Straight FREE !

HAND INSTRUMENTS

R195

Buy 5 AND get 1 Absolutely FREE !!

PLUGGER



FLAT PLASTIC



EXPLORER



SPATULA



EXCAVATOR



BALL BURNISHER



BUY 10 AND GET 3 FREE – LIMITED TO 20 HAND INSTRUMENTS

THYMOSIN



**GINGIVAL MARGIN
TRIMMER**



AMALGAM CARVER



PERIODONTAL PROBE



CORD PACKER



MIRROR HANDLE



CROWN REMOVER



Double
Sided Only !

R 1950

SYRINGE



HINGE TYPE

SOLD OUT

Limited to 1 per customer

WEIDER RETRACTOR



R699

ATRAUMATIC EXTRACTION FORCEPS



R4 999

ROOT LUXATING KIT



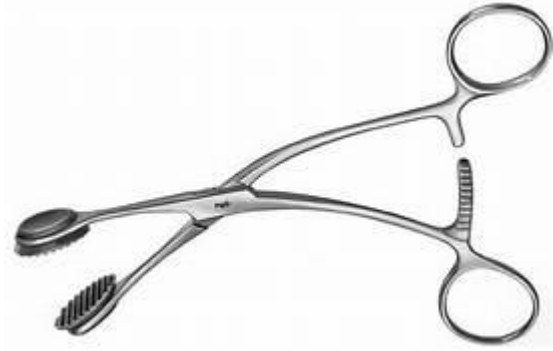
R3 999

AMALGAM CARRIER



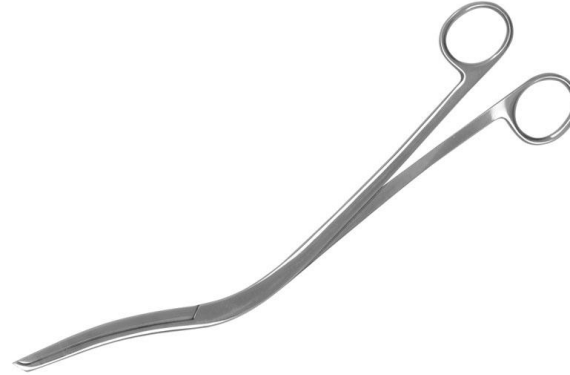
R 149

TONGUE FORCEPS



R 299

CHEATLE FORCEPS



R299

CASSETTE

STAINLESS STEEL 10PC SETTING

R599



Limited to 5 per customer

TISSUE RETRACTOR BENDABLE



Available in silver only
38mm x 330mm , 25mm x 330mm

R 299

BONE CURETTE LARGE



R 299

BONE CURETTE SMALL



R299

PROSTHETICS

WILLES GUAGE



R399

PROSTHETICS

FOX PLATE



R399

CURVED SURGICAL
GUM SCISSOR



R399

Limited to 3 per customer Only !!

PERIOSTEAL ELEVATOR



R299

COTTON PLEDGET
DISPENSOR



R399

ORTHO WIRE CUTTER



R699

ORTHO DISTAL END CUTTER



R 799

ARTICUATING PAPER TWEEZER



R299

**DENTAL SCISSOR
PRECISION CURVED**



R399

**DENTAL SCISSOR
PRECISION STRAIGHT**



R399

Limited to 3 per customer Only !!

CUSHINGS SCALER



R199

SICKLE SCALER



R199

LIGATURE SCISSOR



R399

**TOFFELMIRE AMTRIX
BAND HOLDER -ADULT**



R299

**TOFFELMIRE AMTRIX
BAND HOLDER -CHILD**



R299

**STAINLESS STEEL
CHEEK RETRACTOR**



R399

**STAINLESS STEEL
GALLIPOT**



1 oz – R299
2 oz – R399

**BONE SCOOP FOR BONE
AUGMENTATION**



R299

**10 Pc COMPOSITE FILLING &
SCULPTING KITS**



R 999

High Heat Silicone
Strong Teflon coated
High Quality Product
Stainless Steel
No case

SURGICAL INSTRUMENTS

CASTROVIEJO NEEDLE
HOLDER OR SCISSOR



R699

MAYO HEGAR
NEEDLE HOLDER



R299

AUSTIN TISSUE
RETRACTOR



R299

BONE RONGEUR



R499

TISSUE FORCEP



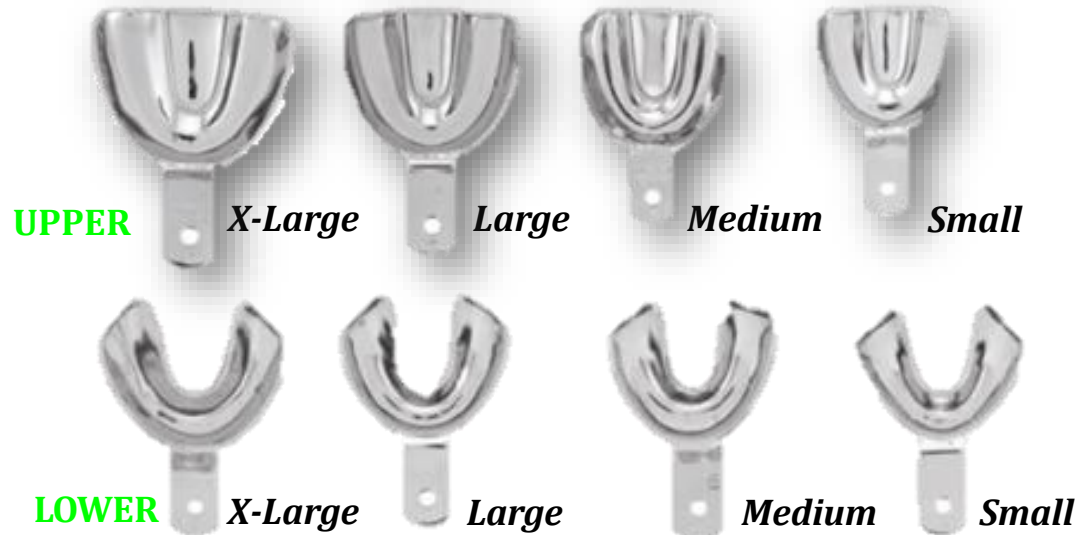
R299

SCALPEL HANDLE



R199

IMPRESSION TRAYS DENTURE SOLID



R199 EACH

IMPRESSION TRAYS PERFORATED



R199 EACH