

MAGNIFIDENT

**Lucky
Draw**



April



2 is Twice as NICE !



**Stand a chance to win
the 2 x Le Art LED featherlight Coloured Handpieces
Only Purchases over R5,000 will qualify for the DRAW
The More you Buy the higher the chance to WIN !!**

**FREE Delivery when Purchasing consumables over
R2000**

Our Prices Are Vat Inclusive
Check before you buy !

**IMPORTANT
NOTICE**

**DON'T GET
FOOLED**



**We Supply VAT Invoices
which Means you save !!**

National Environment Management Act, 1998
Act No. 107 of 1998

Effective 31 March 2025

Deadline 31 March 2026

All dental facilities are required to comply with best management practices and requirements to operate and maintain an amalgam separator according to its manufacturer's recommendations, as required by the Act.

DEADLINE HAS NOW PASSED



5. Phasing-down dental amalgam

- (1) Dental amalgam may only be used in pre-dosed encapsulated form which may not exceed 0.58 ml.
- (2) A person or an organ of state that owns or is in control of a dental facility in which dental amalgam is used, or where dental amalgam fillings or teeth containing such fillings are removed, must ensure that their facilities are equipped with amalgam separators for the retention and collection of amalgam particles, including those contained in used water.
- (3) The dental facilities referred to in subregulation (2) must ensure that amalgam separators in use from 1 April 2026, provide a retention level of at least 95% of amalgam particles.
- (4) Amalgam separators must be maintained in accordance with the manufacturer's instructions to ensure the highest practicable level of retention.
- (5) A dental practitioner may not release amalgam directly or indirectly into the environment under any circumstances.
- (6) A person or an organ of state that import or export dental amalgam capsules, must develop a Mercury Phase-down Plan for dental amalgam.



AMALGAM SEPERATOR

Global certification, TUV tested,
complies to BS EN ISO 11143.

2 year parts warranty

This is Europe's most cost effective Amalgam separator

Not electrical (no power required)

No running costs

No maintenance

No servicing

No hidden costs

Separate Installation (dependent on location etc)

Silent operation

100% recyclable

Fits both dryline and wetline suction systems

No rotors/collector cups

Easy fit

Up to 2 years usage without needing to be recycled

R 7,900

Excludes Shipping and installation costs



Size 1



Replacement Cartridges
Available –
Replace Every 2 yrs ONLY

Current cost of replacement cartridge is R1500 less
than the cost of the New Cartridge

AMALGAM SEPERATOR

Global certification, TUV tested,
complies to BS EN ISO 11143.

2 year parts warranty

This is Europe's most cost effective Amalgam separator

Not electrical (no power required)

No running costs

No maintenance

No servicing

No hidden costs

Separate Installation (dependent on location etc)

Silent operation

100% recyclable

Fits both dryline and wetline suction systems

No rotors/collector cups

Easy fit

Up to 2 years usage without needing to be recycled

R 10,900

Excludes Shipping and installation costs



Size 2



Replacement Cartridges
Available –
Replace Every 2 yrs ONLY

Current cost of replacement cartridge is R1500 less
than the cost of the New Cartridge

**CLEAR DENTAL SALIVA EJECTORS
WITH REMOVABLE BLUE TIPS
(100'S)**



**SPECIAL
OFFER**

R55.90

Maximum 5 Pkts

Nitrile Gloves (100's)



**SPECIAL
OFFER**

R55.90 Maximum 5 boxes

**DISPOSABLE 3-IN-1 SYRINGE TIPS
MULTICOLOUR (Packs Of 250pcs)**



**SPECIAL
OFFER**

R299 Maximum 5 Pkts

Cleaning brush (Bur and Forceps)



Pegasus Type Bur,
Instrument and
Forcep Cleaning
Brush

**SPECIAL
OFFER**

R99

Max 2 per
customer

Plastic Impression Trays (pair)



SET OF 2
SMALL ONLY
Upper and Lower

R34.90

**SPECIAL
OFFER**



SET OF 10
Various Upper
and Lower Set
and sectional

R99,90

550ml Lubricating Handpiece Oil



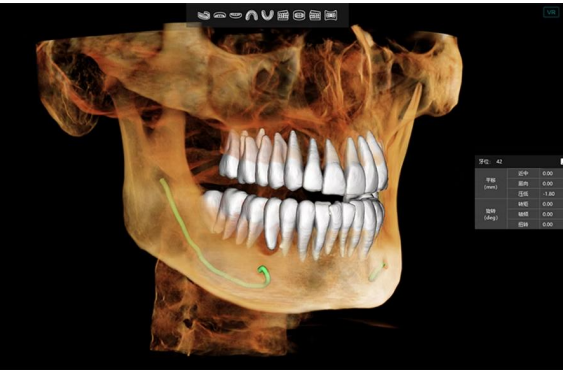
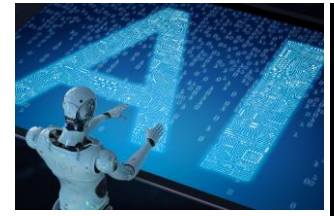
**SPECIAL
OFFER**

R399

Expiry Aug 2026
Max 3 per customer

NEW

MEYER CBCT "The Reliable Choice"



GET IT WHILE IT'S HOT!

Whatsapp
0845837274
For Brochure and
more Details



AI ARTIFICIAL INTELLIGENCE

Take THE Leap

Superior Quality
Clear imaging, meeting comprehensive clinical diagnosis and treatment needs

Rich functionality significantly enhances doctor-patient communication efficiency

Super high Quality Dental CBCT Machine , with Artificial Intelligence

- Inferior Alveolar Nerve Tracing Ai
- Virtual EndoScopy with Video Playback Ai
- Root Canal Ai
- Optional Ceph with One click tracing Ai
- Orthodontic Tooth Segmentation Ai
- CPR - Curve Plane Reconstruction
- Smart Pan - Adult and Kids
- Maxillary Sinus
- Virtual Extraction and Implant Simulation
- Magic Button for Metal Artifact Reduction
- Model Scanning
- De-Noising

- Now with the following features :**
- Loaded with Ai Technology
 - CBCT and Pano Function + Model Scan
 - Upgraded to DUAL HIGHER FOV
16 x 10 , 8 x 5
 - Computer + Monitor included
 - Floor Stand included
 - Standard 2yr Warranty included
 - Free Delivery in Gauteng
 - Free Installation in Gauteng

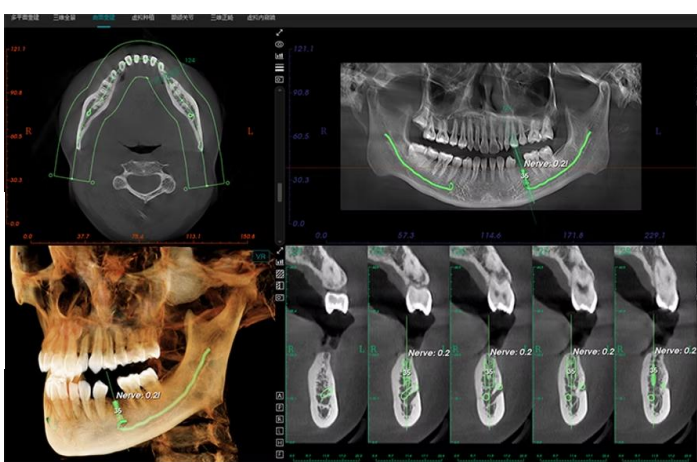
PROMO!

R 649,900

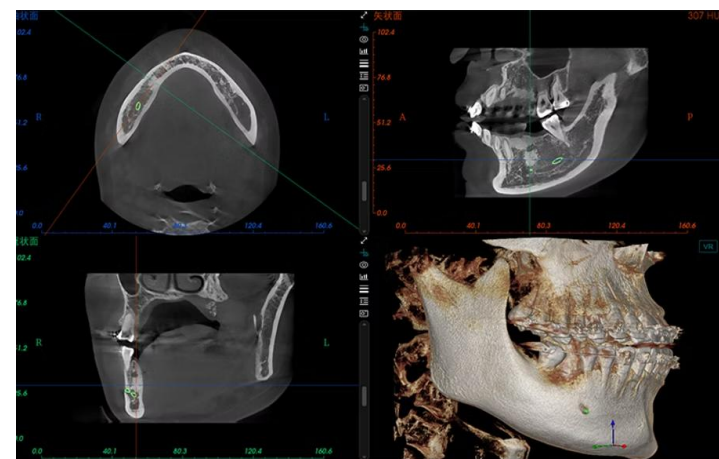
NEW LAUNCH



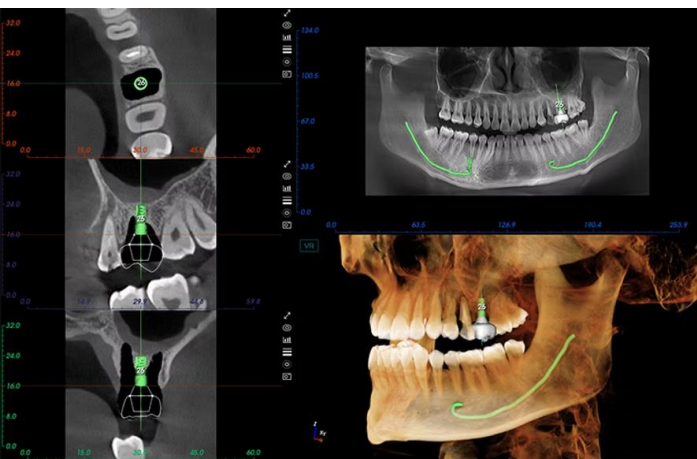
AI
ARTIFICIAL
INTELLIGENCE



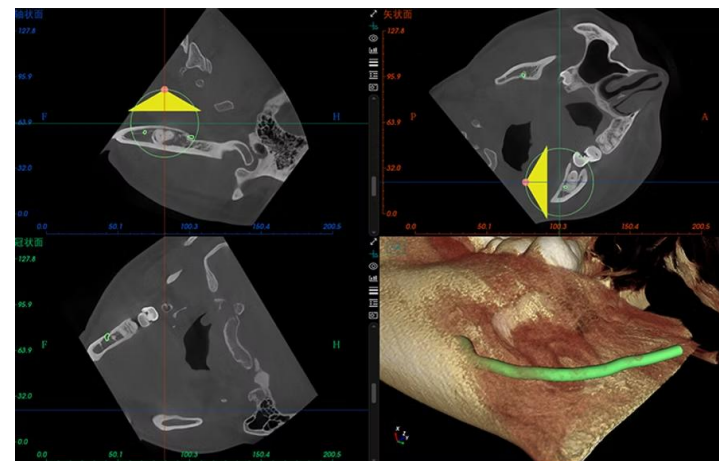
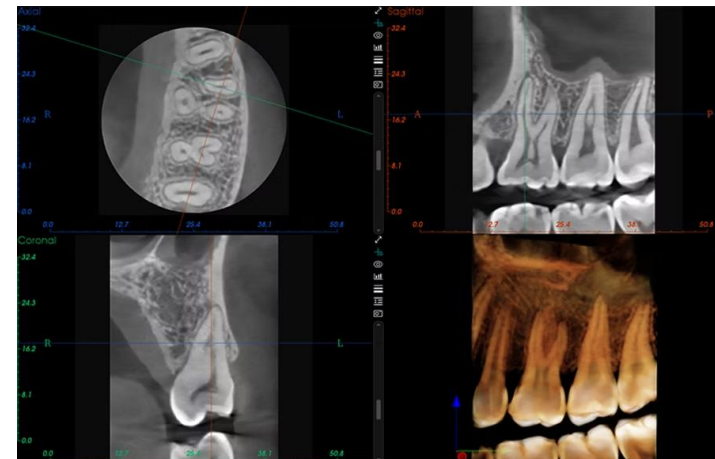
AI
ARTIFICIAL
INTELLIGENCE



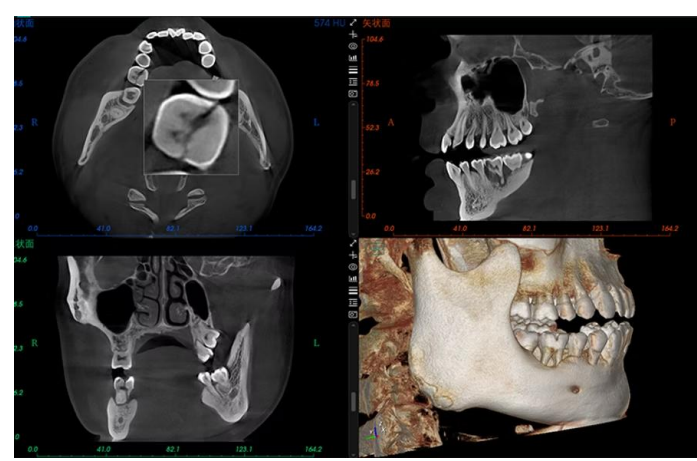
AI
ARTIFICIAL
INTELLIGENCE



AI
ARTIFICIAL
INTELLIGENCE



AI
ARTIFICIAL
INTELLIGENCE



AI
ARTIFICIAL
INTELLIGENCE



COXO INTRA ORAL SCANNER

Now From

R 64,900



BITE YOUR TEETH INTO TECHNOLOGY ✦

COXO[®]

Professional Dental Manufacturer



**Now with
Implant Scanning
Module !!**

**Now with
Edentulous Scanning
Capability**

**Most Affordable, Branded
3D IntraOral Scanner in
South Africa for sure !!**

CRAZY DEAL



R 64,900
Scanner and Software

First 3 customers



R 89,900
Now with Msi i7 Gaming
Laptop with Software

First 3 customers

- Jaw Scanning Time:30s
- Scanning Accuracy:10µm
- Camera Size:220*36*34mm
- Weight:180g
- Scan Head Size:
 - Standard:20x17mm ;
 - Mini:17x14.5mm
- Depth Of Field:0-18mm
- Light Source: LED
- Window Size:17x15mm
- Number Of Frames:30fps
- Scanning Software
- Output file as .stl or .obj or.ply
- Ai Reporting
- Model creator
- Scan, Record and Playback Feature
- Implant Scanning available now too !!
- Edentulous Scanning for partial dentures
- **Open System**
- **No Annual License Fees**

IntraOral3D scanner

**CRAZY
DEAL**



- Cost Effective Scanning Solution !!
- Ergonomic Design – PEN Grasp
- Convincing scanning speed – 1min for the upper jaw, less for the Lower
- Light weight of only 350g ,
- High resolution up to 10 um, 15fps video
- Low inlet height of only 14mm
- Impressive field depth of 17mm
- 2 Tips included for adult and kids
- Specifically designed for dental industry
- Smooth Speed imaging
- Realistic HD Colour
- Powder FREE scanning
- Adopts AI Technology – Smart Technology
- Portable ergonomic pen design
- Natural Anti shake Technology
- Built in Anti-Fog Function
- 2 Autoclavable Tips
- Open format support for STL, PTY etc.
- Includes Scanning Software
- One License activation
- No mandatory updates or License Fees
- 6-month Warranty
- 5 GB Cloud Access Platform
- No Yearly Fees



Elegant AoralScan 2

R 69,900

**UNBEATABLE
DEALS!**



Now Wireless with Battery Pack

Product Model: AR HEAD LOUPE

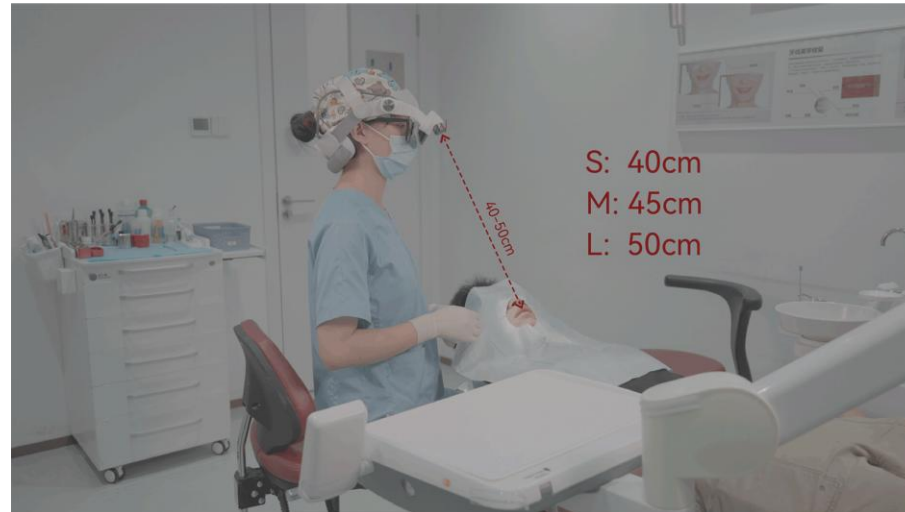
Magnification: 3.5X/5X/7.5X/9X

Control method: Remote control

Connection method: Wireless connection

Note: Foot pedal control is optional.

*The highest multiplier is achieved by adding a 15% digital amplification.



R79 900



IDEAL MICROSCOPE AND LOUPE COMBO



Augmented reality

•Interactive experience of a real-world environment enhanced by computer-generated perceptual information spatially registered to the user's environment



AUGMENTED REALITY

3x/6x Magnification
4x/8x Magnification

The AR Magnifying Loupe merges augmented reality with advanced magnification, providing exceptional clarity for dental professionals. With Microscopes the entire Complete system needs to move while AR Loupe is able to move Freely

Reduce Back & Neck Strain

Weighing only 250 grams, the headset allows for better posture without bending or squinting.

Ergonomic Comfort

Engineered for extended use, ensuring comfort during long procedures.

Zoom Functionality

Easily zoom in or out on fine details (options of 3x/6x or 4x/8x).

Compatible with Glasses

Designed to accommodate glasses for clear vision and comfort.

LED Lighting & Adjustable Color Temperature

Improves visibility for accurate diagnoses and precise color matching.

High-Resolution Imaging

Offers real-time high-resolution visuals for detecting fine cracks and enamel variations.

Real-Time Connectivity for Consultations & Training

Connect the headset to external displays like monitors, TVs, or projectors for enhanced viewing.



R49 900

PRO IMPLANT / SURGICAL
MOTOR SYSTEM – FIBRE OPTIC



COXO®

Professional Dental Manufacturer
Excludes Handpieces



First 3 Customers Only

R29,900

Max 1 per customer ,
First 3 Customers receive FREE Trolley

SURGICAL IMPLANT
HANDPIECE FOR
ELECTRIC MOTOR

20:1



R6 999

Non Fibre Optic

R8 999

Fibre Optic

SURGICAL Fibre Optic
HANDPIECE FOR
ELECTRIC MOTOR

1:1



R7 999

EXTERNAL
IRRIGATION

50% Discount on Handpieces when Purchasing Motor

Now with
Free TROLLEY

1st 3 customers

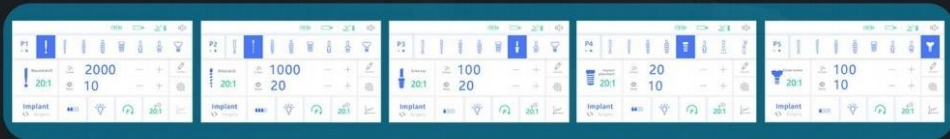
Implant mode & Surgery mode 2 in 1

•Implant mode

12 Optional steps,
help you create your own planting process



5 Memorized Programs
Dentists can set 5 programs with different data



•Surgery mode

8 Different programs, meet all your need



DELUXE Electric Motor



R49,900

Free Handpieces
1 x 1:5 CA Red-Ring Fast Handpiece , or
1 X 1:4.2 Angled Red-Ring Fast Handpiece
and
1 X 20: 1 Contra-Angle Implant Handpiece

Max 1 per customer
First 3 Customers receive
FREE Handpieces

3-IN-1 MACHINE

Surgery XT-II



**IMPLANT MOTOR
SURGICAL MOTOR
PIEZO SURGERY**



Most versatile and packed equipment with small foot print
Big Variety of Dental procedures covered,
from Implants to Surgery, Restorative and Piezo Function –
its got it ALL !!

Wireless or Wired Foot Control (works both ways)

Includes :

Piezo Handpiece + Tips Included

1:5 Fast LED Handpiece

20:1 Implant LED Handpiece

1:1 Straight Surgical Handpiece Included

12 month Warranty



COMPACT
EASE OF USE
QUALITY PRODUCT



R 59,900

Limited to the First 3 purchased
In this Month

Maximum One Per Customer Lifetime offer !
Terms and Conditions Apply

MAX PIEZO SURGERY III

Ultrasonic frequency micro-oscillation of Max Surgery III is an ideal solution for minimally invasive surgery, ultrasonic osteotomy, and more dental diagnosis & treatment.

The Max Surgery Ultrasonic Surgical System has 4 modes: Bone Cutting, Periodontics, Endodontics Treatment, Cleaning and is equipped with various ultrasonic working tips for different applications.

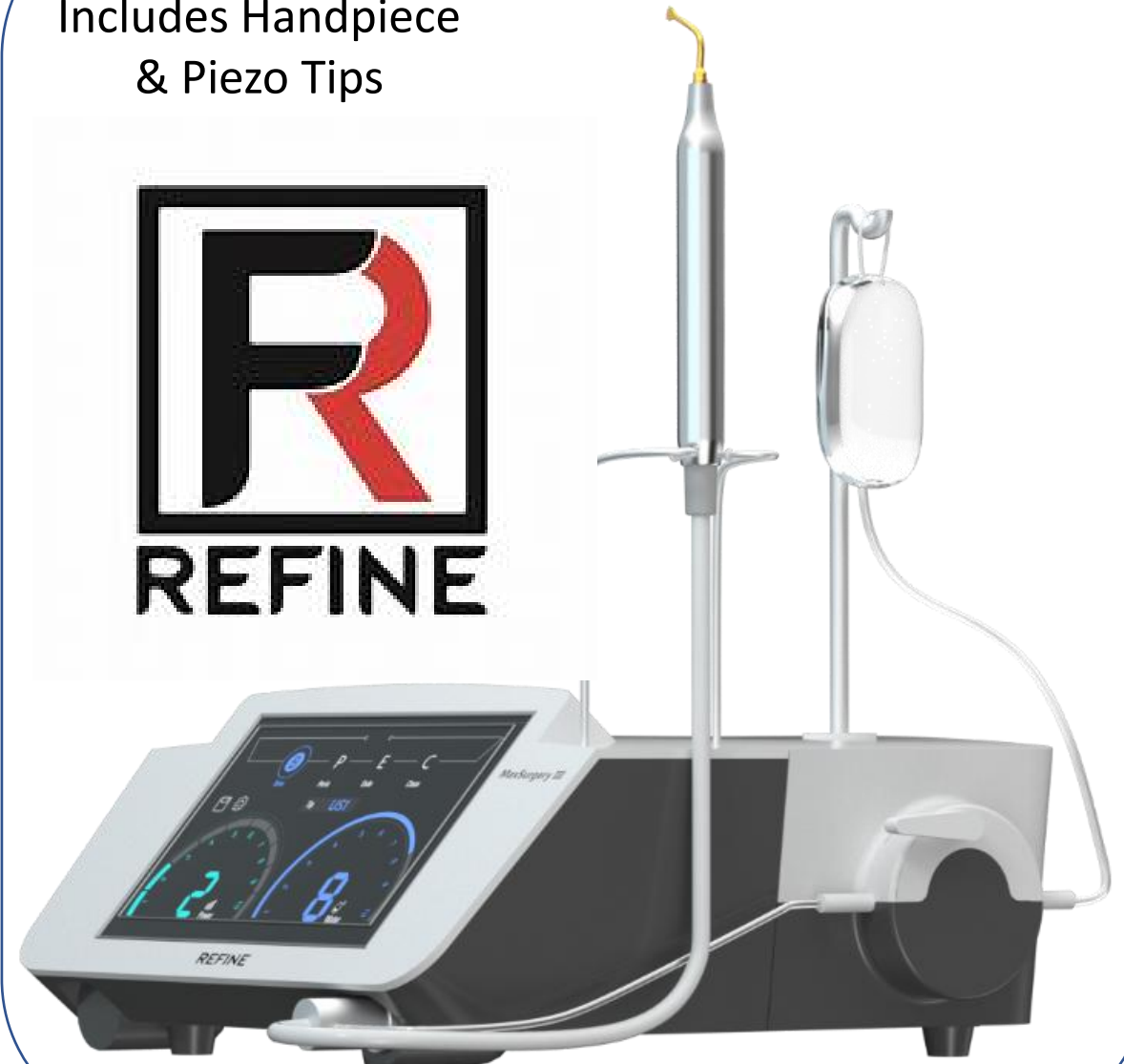
Minimal incision 3.5mmx0.5mm and No damage to soft tissues are its remarkable features. Thus, ultrasonic bone cutter Also, help surgical dentists to accomplish a minimally invasive surgery precisely & effectively.

The ultrasonic bone surgery device helps to maintain patient comfort following the trauma of tooth extraction.

Also, it has autoclavable highly efficient handpiece, multi-function pedal for water volume adjustment, mode switching, power adjustment and autoclavable cable to avoid cross-infection.

R39,900

Includes Handpiece
& Piezo Tips



Portable Xray Combo Deal

**CRAZY
DEAL**



**V-Light Premium
Digital Portable Xray System
HDR - Size One Sensor #1
FREE Sensor Positioner
FREE Back Scatter Radiation Shield
FREE Xray Apron
FREE Thyroid Collar
FREE HDR IntraOral Camera
With seamless integration with
sensor software**

First 3 Customers Only

R49 900

First 3 Customers Only



Portable Xray Only

**V-Light
Portable
X-ray**



**Free
Backscatter
Radiation Shield**



Tube Voltage	: 65kV
Tube Current	: 2.5mA
Focal Spot	: 0.4mm
Exposure Time Range	: 0.02-2s
Maximum Duty Cycle	: 1:30
Gross Weight	: 1.8Kg
Battery on Full Charge	: 500shots (0.5s)
Built in Smart Angulation	: Included
Dimensions (L300mm x W110mm x H250mm)	

R27 900



**CRAZY
DEAL**

Licence requires optional Xray Body Apron

HDR 500 – Size #1
High Quality
IntraOral Xray
Sensor



CRAZY
DEAL

R 23,900

First 3 customers ONLY !!
Maximum One Per Customer Lifetime !
New Xray Sensor Customer ONLY !!
Terms and Conditions Apply
Size #2 available @ extra R1000



2026 FULL Promo Package Deal with Amalgam Separator

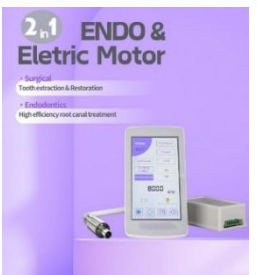
- 2026 Promo Chair – with Built in Electric Motor and Electric EndoMotor
 Upgraded to 4 BULB LED Operator Light with Touchless Sensor ,1 x Stool
 1 x Built in Whitening/ Bleaching Lamp
 2 x Fast Turbine Handpiece Set
 1 x Slow Set Handpiece Set – Latch Type
 1 x Portable Xray Package Deal (Xray ,#1 Sensor , Positioner + Apron)
 1 x IntraOral camera and Monitor
 1 x 1-surgery 30L Oil-Less Compresso
 1 x Built-in LED Curing Light
 1 x Built-in LED Scaler
 1 x 1-Surgery Semi-wet suction
 10 x Adult Forceps 10pcs
 7 x Paedo Forcep kit (7pcs)
 5 x Stainless Steel Cassettes
 50 x Hand instruments (5 sets)
 1 X Free Adaptive Matrix Kit
 1 X Rubber Dam Kit + 6 clamps
 1 x Steam Sterilizer 18L Class NM
 1 x White Distilled water generator
 1 x Ultrasonic Baths (3.2L)
 1 x Instrument Wrapping Machine
 1 x External Dental Aerosol Suction
 1 x Handpiece Oil Adaptor Kit + 3 Oil
 1 x Overshoe dispenser KIT+200 overshoes
 1 x Single Door UV Cabinet
 1 x Room Atomiser

Special Package Deals!

EXCLUSIVE

NB: Available in Blue , Green , Silver and Pink

R239 900
 Free Delivery and Installation in Gauteng Only ! T's & C's Apply
 1st 3 Customers ONLY



PROMO 2026 CHAIR

PROMO SERIES

2 in 1 ENDO & Electric Motor

- Surgical
Tooth extraction & Restoration
- Endodontics
High efficiency root canal treatment

**CRAZY
DEAL**



*NB: Available in
Blue , Green , Silver and Pink*

R79,900
LIMITED EDITION

- ✓ Luxury white Finish
- ✓ Upgraded to 4 Bulb LED Lamp
- ✓ Upgraded to 2 Arm Rests
- ✓ Upgraded to 3 Memory Programs
- ✓ Upgraded Assistant Control Panel
- ✓ Upgraded to Multifunction foot Control Panel
- ✓ Built-in Clean water System
- ✓ Built-in LED Scaler + Tips
- ✓ Built-in LED Curing Light
- ✓ Automatic Cup filler
- ✓ Glass Spittoon
- ✓ Sanitary PU leather Finish
- ✓ Double articulating headrest
- ✓ Free 1 x Dental Assistant Stool
- ✓ Free Fast Handpiece x 2
- ✓ Free slow Set
- ✓ Free IntraOral Camera System
- ✓ Free teeth Whitening System



**First 5 customers this MONTH
get FREE Upgrade to
Built-in 2-in-1 Electric Motor with
Surgical Electric Motor
Endo Electric Motor***

*Excludes ContraAngle handpieces
Handpieces Sold Separately



MDENT S2 PLUS

SMART 2+ Dental Unit
with DUWL

Dental Unit Water Line
Disinfection

SILVER SERIES

NOW IN STOCK



SMART DESIGN

SMART

2+



- ✓ White Finish
- ✓ Upgraded to 4 Bulb LED Lamp
- ✓ Upgraded to 2 Arm Rests
- ✓ 4 Hole Midwest Connections
- ✓ 3 Memory Programs
- ✓ Built-in Clean water System
- ✓ Automatic Cup filler
- ✓ Rotatable Spittoon
- ✓ Built-in LED Curing Light
- ✓ Sanitary Cushion
- ✓ Double articulating headrest
- ✓ One Touch Disinfection-DUWL
- ✓ Free Dental Stool
- ✓ Built-in LED Ultrasonic Scaler
- ✓ 1 x Free LED Handpieces
- ✓ 1 x Free Slow Set
- ✓ 1 x Free Prophy AirJet
- ✓ 1 x Free IntraOral System

LIMITED EDITION

Built in Aseptic Disinfection System - DUWL

Effectively reduce the Multiplication of Bacteria
and the accumulation of BIOFILM
In the WATER LINE

- One Button Key Operation
- Fully Automatic
- Working Indicator Prompt
- Easy to Use
- Peace of Mind
- Covid-19 Enhanced System



NB: Available in Yellow/Orange & White

R89,900

With Built-in Scaler, Built-in Curing Light
Free Dental Stool
Free Fast and Slow Handpieces



MDENT S3 PLUS

SMART 3+ Dental Unit

Knee Break Folding

Dental Unit



Optional Intra Oral
Camera &
17" Monitor

SILVER SERIES



NB: Available in Optional Cart System
Choice of colours Available

R129,900
With Built-in Scaler, Built-in Curing Light
Free Dr. Stool and Assistant Stool
Free Fast and Slow Handpieces

Optional Extras:

- Available as Cart or Stand alone
- Available as Side delivery or Top Delivery Unit
- Available with Optional NEBULA Dental Lamp

- ✓ White Finish
- ✓ Upgraded to 6 Bulb LED Lamp
- ✓ 4 Hole Midwest Connections
- ✓ 3 Memory Programs
- ✓ Built-in Clean water System
- ✓ Automatic Cup filler
- ✓ Rotatable Spittoon
- ✓ Built-in LED Curing Light
- ✓ Built in LED Scaler
- ✓ Double articulating headrest
- ✓ Free Premium Dr. Stool
- ✓ Free Assistant Stool
- ✓ 1 x Free FAST LED Handpiece
- ✓ 1 x Free Slow Set
- ✓ 1 x Built in Electric Motor with Red Ring 1:5



丹特思®
Detes
DETES MEDICAL SUPPLIES

TOP 301-2025

ROTARY with DUWL

Dental Unit Water Line
Disinfection



Includes the built-in
Electric Motor And
Handpiece

丹特思[®]
Detes
DETES MEDICAL SUPPLIES



High End Chair for the Up-Market Clinic
Chair Rotates 90 degrees- Innovation !
Seamless from consult to Examination
You Clients will love it !!
Automatic Disinfection Unit

DIAMOND SERIES

Free 17" IntraOral Camera +
Mounting Arm to Unit



Detes[®]
DETES MEDICAL SUPPLIES

PRE ORDER

R159,900

With Built-in LED Scaler and LED Curing Light
integrated Electric Dental Motor and handpiece
FREE Dr Saddle Stool and Assistant Stool

- ✓ 90 Degree Rotating Chair Seat
- ✓ Knee Break Chair
- ✓ Leather upholstery + Cushion
- ✓ Upgraded to 4 Bulb LED Lamp
- ✓ Optional Nebula implant Lamp
- ✓ Upgraded to 2 Arm Rests
- ✓ 4 Hole Midwest Connections
- ✓ 9 Memory Programs
- ✓ Built-in Clean water System
- ✓ Automatic Cup filler
- ✓ Rotatable Spittoon
- ✓ Central Disinfection System
- ✓ Built-in LED Curing Light
- ✓ Built-in LED Ultrasonic Scaler
- ✓ Double articulating Headrest
- ✓ Modern Dr's Stool
- ✓ Assistant Regular Stool
- ✓ 2 X Free Led Fast Handpieces
- ✓ 1 x Slow Set
- ✓ FREE IntraOral Camera System
- ✓ Built-in Electric Motor –includes
FREE Red Ring 1:5 Handpiece
worth R15,000

2 in 1 ENDO & Electric Motor

- Surgical
Tooth extraction & Restoration
- Endodontics
High efficiency root canal treatment



Endodontic Function with reciprocating modes

Compatibility with different file brands:
Dentsply, VDW, Sirona and ect.



TECHNICAL PARAMETERS

- Product name: 2-in-1 endo & electric motor
- Speed Range: 100~40,000 r/min (rpm) (electric motor mode)
- Max torque: 4.2N.cm (electric motor mode)
- Speed Range: 200~1600 r/min (rpm) (endo mode)
- Torque range: 0.6-4N.cm (endo mode)
- Rotation: Forward/Reverse (electric motor mode)
- Rotation: Forward/Reverse/reciprocation (endo mode)
- Compatible contra angle: 1: 1/1:4.2/1.5/4:1/10:1/16:1/20:1
- Motor Size: $\Phi 22\text{mm} \times L70.4\text{mm}$
- Motor Weight: 71g
- Noise: <60dB
- Motor Luminous intensity: >25000LX
- Output Voltage: AC24V, DC36V/3.33A
- PACKAGE SIZE: 223*184*95(L*W*H)



Electric motor mode



Endomotor mode

Electric motor with different contra angle



1:5 Contra angle

Constant speed and torque creates a smoother and more precise cut, work efficiency is 60% higher

1:1 Contra angle

For teeth Restoration, Polishing, grinding functions, etc.

4:1 Contra angle

Root canal treatment with built-in endo files of most famous brands

1:4.2 Contra angle:

Efficient tooth extraction

R29 900

- Free 1:5 optional Handpiece on Promo Only

1:5 High Speed
For Electric Motor
Red Ring
With Fibre Optic
Available as
Internal/External



Restorative

R6 999

1:4,2 High Speed
For Electric Motor
Red Ring
With Fibre Optic
Available as
Internal/External



Surgery

R7 999

1:1 Slow Speed
For Electric Motor
Blue Ring
With Fibre Optic
Available as
Internal/External



Conservative

R5 999

4:1 Slow Speed
For ENDO Electric
Motor Green Ring
With Fibre Optic
Available as
Internal/External



Endodontic

R6 999

1:20 ContraAngle for Implant
Surgery With Fiber Optic



Implantology

R7 999

1:1 Straight Handpiece for
General Surgery With
Fiber Optic



Surgery

R7 999

**HANDPIECES for
Electric Motor**



KIDDIES DENTAL UNIT

**FREE MULTI
MEDIA
TABLET**

Includes Scaler
and Curing light



R89 900

DINO + CAT ANIMATED DENTAL UNIT

**FREE MULTI
MEDIA
TABLET**



R129 900

FANTASY KIDS DENTAL UNIT



R139 999



DENTEX®

NEW



**UNBEATABLE
PRICE**

DENTEX DX.FLOW Dental Nano Flowable
Light Cure Composite Material

Advantages:

1. Excellent polishing feature and strength.
2. Radiopaque.
3. Fluoride releasing.

Packages:

2g*2(available as A1,A2,A3,),Tips*10

Available in different viscosities

High Flow

Super Low Flow

Perfect for to fill after enameloplasty and
micro enamel abrasion procedures too .

R199

Per syringe



5th Generation Bonding Liquid

SPECIAL OFFER

R299

Max 1 per customer



BOND V dental adhesive is a single component for total etch technology. It can be used widely in dental clinic for all direct and indirect restorations. It also works well for enamel with total etching technique

Expires Aug 2027

7th Generation Bonding Liquid

SPECIAL OFFER

R499

Max 1 per customer



- 1.DX.BOND VII contains MDP monomer which creates chemical interlock with enamel and dentin.It can also generate very good water-proof seal.Therefore the bonding strength is very high and long lasting.
- 2.There is no need to etch dentin before applying adhesive.It is really time saving and easy to use.
- 3.For enamel bonding,DX.BOND VII is optional for selective etch technology when high bonding strength is required.A separate enamel etching can be applied to get better enamel bonding result.

Limited Stock , Get yours before they All Gone

Fixing Porcelain fused to metal crowns and bridges need not stress you out



Neither should fixing All ceramic or Zirconia Crowns and Bridges

All Easily sorted with the Dentex Fracture Repair Kits

DENTEX DENLINK

Porcelain Fracture Repair Kit

Fix PFM fractures and chips , As well As Zirconium and Veneers



- *Porcelain Etch
- *Metal Primer
- *Zirconia Primer
- *Bonding Liquid
- *Metal Mask
- *Resin Repair Material

Expires July 2026

R1,799

Max 1 per customer



UNIVERSAL LIGHT CURING DENTAL RESIN

Direct restoration for all class caries.

Restoration of teeth defect and veneer.

Package:

Light Cure Composite: 4g/Syringe*5
(A1 A2 A3 A3.5 B1)

Syringe Needles : 5pcs/ box*1

Total Etching Adhesive: 5ml/Bottle*1

Etching Gel: 5ml/Syringe*1

Applicators Brushes: 20pcs/box*1

Net weight: 188.4g

Expires October 2027

R1,699

Max 1 per customer





NANO HYBRID

Ideal for Direct Composite Veneers

INDICATIONS FOR USE:

Direct restoration for all class caries.

Restoration of teeth defect and veneer.

Package:

Light Cure Composite: 4g/Syringe*

COLOUR: EA1,EA2,EA3, DA2,DA3,CL

Syringe Needles : 5pcs/ box*1

Total Etching Adhesive: 5ml/Bottle*1

Etching Gel: 5ml/Syringe*1

Applicators Brushes: 20pcs/box*1

Net weight: 188.4g

5 x Silicone Brush Set FREE!!
For the first 5 Customers



Expiry November 2027

R1,999

Max 1 per customer





DENTEX AIR-BLOCK STRIP Oxygen Isolation Gel



R199



DENTEX DX.Etch 37 Etching 10ml

R299

Max 3 per customer

Available in

- A1
- A2
- A3
- B1
- B2



DX.Universal/Anterior/Posterior Nano Hybrid Light Cure Composite is a light curable composite. It can be used for anterior and posterior dentine and enamel restorations. The inorganic filler loading is from 75 % to 82% by weight. The particle size varies from 0.03 to 5 microns.

DX. Universal Light Curing Composite Resins family, the first choice for reconstruction of tooth defects. DX. Universal Composite is a light curable composite. It can be used for anterior and posterior dentine and enamel restorations. The inorganic filler loading is 82% w/w. The particle size varies from 0.002 to 5 microns.

Indications: It is suitable for restoration of Class I to V cavities including tooth defect, inlay, veneer and core building up.

- Advantages:
- High versatility. It takes care of either dentin or enamel restorations
 - Moderate viscosity and non-sticky handling
 - Excellent plasticity and great handling
 - High radio opacity
 - 2g Syringe
 - Long Shelf life

R299



Purchase All 3 items for the Low cost of

R599



Indications:

Used for temporary filling for all class cavities, implant screw sealing, temporary filling the cavity for inlay/onlay or root canal treatments.



Indications:

Used for a single or multi temporary repairs in clinic
Used for temporary crown and bridge before permanent restoration
Inlay/Onlay and overlay
Available as A1, A2 and Bleach White

R1799

R899



Indications:

It is suitable for Core build up, bonding for crown, bridge, inlay/ onlay, filling for special deep cavity restoration



Indications:

Used for the Bonding of temporary Crowns , bridges, inlay/onlay. and overlay

R899



This product consists of double Intertwined polishing wheels. It is easy use for variety of applications. It can polish the areas where other wheels could not reach (e.g., occlusal surface). It works well for composites, glass ionomer and other materials without changing the original shape and damage to the polished material.

- 1.Coarse polishing
- 2.Moderate polishing
- 3.Fine polishing

R599

Max 2 per customer



Indications:

Composite restoration polishing and excess part removal, implant cleaning up, and polishing of inlay/onlay and crown restorations.



R799

Max 1 per customer

DEN CEM HANDMIX Self Adhesive Dual Cure Resin Cement

Indication for use :

DEN CEM II is suitable for cementation of crown and bridge which made of PFM or Zirconia. It is a liquid-powder form.

Advantages:

High bonding strength: Compare with glass ionomer cement, DEN CEM II has a good bonding strength and flexural strength.

Economic: One set can be used to fix at least 100 teeth. It is more economic in comparison with automix design

- **Chemistry Stability:** Liquid and powder are designed to be packed in separate bottles. The chemistry properties are more stable and can be stored in normal room temperature and no need of refrigeration

- Dual cure: Light cure and self cure for better choice
- Low solubility

Radiopaque

Fluoride releasing

Packaging Specifications:

Refill 8ml liquid + 15g powder Universal



Indications:

Applied to dentin as a protective liner from restorative materials, indirect pulp capping

Packaging:

Specification: 1.5g

Advantages:

- Light cure and easy to use
- Radiopaque
- Good physical properties
- Low solubility to water
- Good protection for pulp

R399

Max 2 per customer



R199

Max 1 per customer



Indications:

Suitable for temporary retention of removable dentures
Recommended usage: apply once a day before wearing



Indications:

Seal the pits and fissures on the tooth surface to prevent dental caries.



Indications:

Fluoride Coating to increase the acid resistance of enamel and Prevent dental caries
0.5g x 50

R 999

Max 1 per customer



R599

Indications:

Relieve the symptoms of tooth sensitivity caused by dentin exposure.

Max 1 per customer



DX. Whiten composite belongs to Enamel shade composite system. In clinic practice, two or three kinds of veneer whitening composites are used to repair veneer. The whitening simulation is successfully achieved with nature tooth appearance.

Indications: • Discolored veneer and composite inlay

Advantages: Three shades of stratified filling to rebuild the layering of tooth Ideal viscosity, easily to shape High simulation, natural esthetic

- Good polishability and durability Packaging
- Specifications:
- Specification: 4g
 - Shade: EXW (Exetreme white), EW (Enamel white), BL(Bleach)



Direct Veneers

R599



Before



After



Increased transparency from EXW to BL



Product Features:

The DENCOVER (Light Cure Liquid Polish), after light-curing, forms a smooth and glossy resin film on the surface of the resin, which can reduce the occurrence of surface staining on resin restorations.



Scope of Application:

Surface treatment of resin dental restorations.

R499

Max 1 per customer

Packaging Specification:

Specification: 3.0ml/bottle



Click links

Available online ONLY !!

www.magnificentcc.com

Max 1 per Customer

PERIOSTEAL SOFT BRUSHING KIT



The concept of the Soft Brushing technique is to softly disrupt the organization of the collagen fibers of the fibrous periosteum so they can be displaced apically off the bone exposing the roots and bone. The Brushes in the kit reduce the stiffness of the fibers that permits the flap to be reflected and released only by using the Brushes.

R1,999

10 Pc COMPOSITE FILLING & SCULPTING KITS

CRAZY DEAL



High Heat Silicone
Strong Teflon coated
High Quality Product
Stainless Steel



R1,499

FREE SILICONE SCULPTING BRUSH KIT
Includes the Stainless Steel Cassette

MICRO PERIODONTAL SURGERY KIT



- 1 X Bone Surgery 3 Pcs set
- 1 X Castroviejo Scissors 14 cm TC STR
- 1 X Castroviejo Needle Holder Lock 14 cm TC
- 1 X Micro Forceps 14 cm
- 1 X Surgical Scalpel Handle Rotatable 180 Degree
- 1 X Micro Surgery Scalpel Handle
- 1 X Minnesota Cheek re-tractor
- 1 X Mouth Mirror with Handle
- 1 X Stainless Steel Instruments Organizer Cassette

R2,499



Universal Screwdriver Kit

R2450



Tissue Punch Bur Kit

R1750



Surgical Implant Drill Kit with Wrench

R2950

**CRAZY
DEAL**

**Implant Drill Kits
On Promo !!**

Max 1 per Customer

PAEDIATRIC FORCEP PROMO KIT



- Fig #560 Upper Incisor Forcep
- Fig #561 Upper Molar Forcep
- Fig #563 Lower Molar Forcep
- Fig #562 Upper Root Forcep
- Fig #567 Lower Root Forcep
- Fig #566 Upper Molar Forcep Small
- Fig #565 Lower Incisor Forcep

R 1,999

PRF CENTRIFUGE PRP CENTRIFUGE



Includes 10 pcs Tubes for PRF Free
Includes 10 pcs Tubes for PRP Free

R 14,999

**COMING
SOON**

**Watch
this
space**

YEAR
end
SALE

SOLASE Laser Limit-less **S**MART



SOLASE Dental Diode Laser



All Attachments optional Extra !

LAZON
LAZON Medical Laser

CRAZY
DEAL
DON'T MISS OUT!

LAZON
LAZON Medical Laser

R 59,900

Excludes Phone

Includes:

- Wireless Foot control
- Upgraded Laser Handpiece Attachment
- FREE Assorted Laser Tips

- **SELF-LEARNING**
- **PATIENT RECORD**
- **MULTI ACCOUNT**
- **CLOUD BACK UP**
- **APP UPDATING**
- **CUSTOM PRESETS**
- **OFFLINE MODE**
- **SMART TIP INITIATION**

HYDRUMP

Premium
Quality



R4490

HYDRUMP

- Exclusive Gold Finish
- High Quality
- Superior Cutting Efficiency
- 1 yr Warranty
- German Ceramic Bearings
- Premium Product
- AAA Quality



NEW
ARRIVAL



FREE
Set of Crown
Prep Burs ,
worth R499



5th Generation 6LED Premium Shadowless Fast Turbine Handpiece

- High Performance LED Handpiece
- 6 LED Shadowless Light Projection
- 6 Spray Nozzles
- High Torque with Excellent cutting efficiency
- Light and comfortable
- Reinforced Body and casing
- Strong Ceramic Bearings
- A Quality
- Affordable and Value for Money
- 3 Month Warranty



The Workhorse of the Dental Surgery



- Get 1x Free 550ml Oil , 1x FREE Matrix Kit,

**CRAZY
DEAL**



Now only : R2990



Max 2 per customer



NEW
ARRIVAL



ART STUDIO



Only R1990

Available in Blue and Green

* 1month Warranty *Ts & Cs Apply

Caries at a glance

A tool to achieve your treatment goals!

Red: Carious plaque

Real-time detection of carious tissue

Green: Enamel

CRAZY DEAL

Now Available with FREE OIL

Fast handpiece with caries Detection function .

Features of Caries Detection Handpiece :

- Ceramic bearings
- 8 cooling jets
- 4 water cooling , 4 air cooling
- 4 hole attachment to Midwest tubing
- NSK Type Quick Connector



R5,999

With NSK Type I Quick Connector

PACKAGE DEAL

PREMIUM HANDPIECE PROMO SPECIAL #1
PURCHASE 3 X FAST TURBINE 3rd GEN LED..
AND GET 1x Slow Set FREE + 3x Matrix Kits + 3x OIL FREE



R8,999

*1 month warranty



Contra Angle
available as latch type ONLY !
5 packs Prophy Brushes Free
Mix and Match the shape



3 Free Matrix Kits



3 Free OIL

HANDPIECE PROMO SPECIAL LIMITED TO 1 SPECIAL PER CUSTOMER- FIRST 10 CUSTOMERS ONLY

PREMIUM HANDPIECE PROMO SPECIAL #2 PURCHASE 1 X FAST TURBINE 3rd GEN LED AND GET 1x Slow Set FREE + 1x OIL FREE



R4,999

*1 month warranty

PACKAGE DEAL

=



+



Contra Angle available as latch type ONLY !
2 xFREE Packs Prophylaxis Brushes included

1 Free OIL

HANDPIECE PROMO SPECIAL LIMITED TO 1 SPECIAL PER CUSTOMER- FIRST 10 CUSTOMERS ONLY

Xray Sensor Sleeves



Jumbo Pack, 500 pcs
Limited to 1 per
Customer/Practice
Price valid on delivery
Orders

R499,90

Slow Set Handpiece Kit

R1,999



Latch Type Only
Price valid on delivery Orders
Max 2 per customer ,No Warranty

Dental Prophyl Brushes



R49

Cup Shaped /
Flat Shaped
Multicolour
Animal Free
Pkts of 12pcs



R39

Max 10pkts
Each type

Matrix band Kit



R99

Max 2 per customer

Latch or
Push
Button



R 899

Max 2 per customer
No warranty

Dental IPR (Inter Proximal Reduction) Kit

Orthodontic Interproximal Reduction (IPR) Contra Angle 4:1 Stripping Kit

The blade holder features a secure connection, ensuring stability. Uniquely designed holes in the unglazed blade surface effectively filter out water and debris while stripping. Made from durable material, the blade offers a long lifespan. The anti-skid 3D pattern provides a comfortable and secure grip. With a quick-connect design, it offers convenience and saves time during use.

Features:

Soft Sound & Ultra Quiet: Provides a comfortable and quiet experience for patients

Patient Comfort: More comfortable than manual hand stripping, reducing gagging and soft tissue irritation

Doctor-Friendly Design: Minimizes the need to hold rotating instruments, offering easier handling

Ergonomic, Single-Handed Use: Optimizes tactile control and reduces hand fatigue

Flexible Strips: Conforms to natural tooth contours, preventing sharp corners and excessive enamel removal

Versatile Application: Effective for both anterior and posterior areas; ideal for invisible treatment and rapid enamel restoration

Autoclavable: Ensures proper sterilization and hygiene

4:1 Gear Ratio: Low-speed operation ensures oral safety for patients

Variety of Saw Blades:

90µm: Double-sided, carborundum material, used as a saw for opening contacts

60µm: For reduction

40µm: For contouring

25µm: For finishing

15µm: For pre-polishing

Packaging includes the following:

1 x Strip contra angle

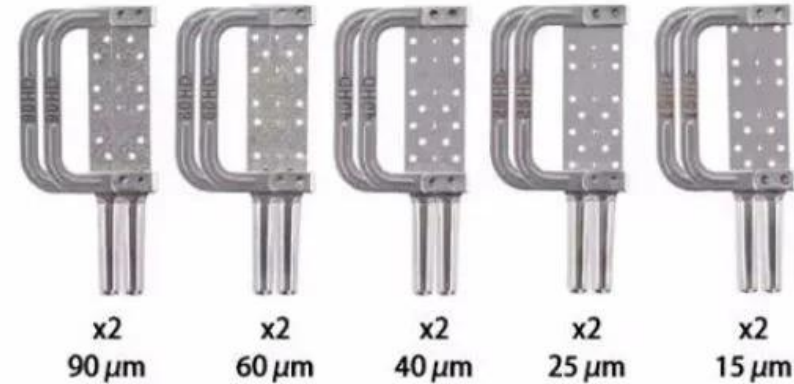
1 x IPR thickness gauge

1 x Removal tool

10pcs x Double-sided saw blade (5 models & 2 pieces each)

Only R2990

2 Free extra Sets of 5 Blades for the 1st 5 customers
Valued at R1960



**NEW
PRODUCTS**

TPC

Handpiece Lubricating Unit
It's Simple, Safe and Economical



HYDRUMP

For the first 5 Purchases :
Purchase the Handpiece Lubricating Unit and get a FREE
Gold Series PREMIUM Hydrump Handpiece valued @ R4500



THIS MONTH ONLY

Only R12990

AIR POLISHER SYSTEM



Supragingival Cleaning
Interdental Space Cleaning
Subgingival Cleaning
Orthodontic brackets Cleaning
Air polishing after Scaling
Preparation to bond Ortho Brackets
Implant and Abutment Cleaning
Stain Removal and Smoothing
Preparation for Bleaching
Tongue and palate Cleansing
Versatile



SIMILAR TO i-JET

Prophy Jet is a must-have device in every dental office due to its wide application and benefits in dentistry. The device is versatile, efficient, and gentle, and provides a comfortable experience for the patient. Investing in a Prophy Jet will not only improve the quality of dental care provided but also save time for both the dentist and the patient. The device is also an excellent investment in the long-term oral health of patients. Dental professionals should consider adding the Prophy Jet to their arsenal of tools to provide the best possible care to their patients.

R4,950

Arm Automatic Blood Pressure Machine



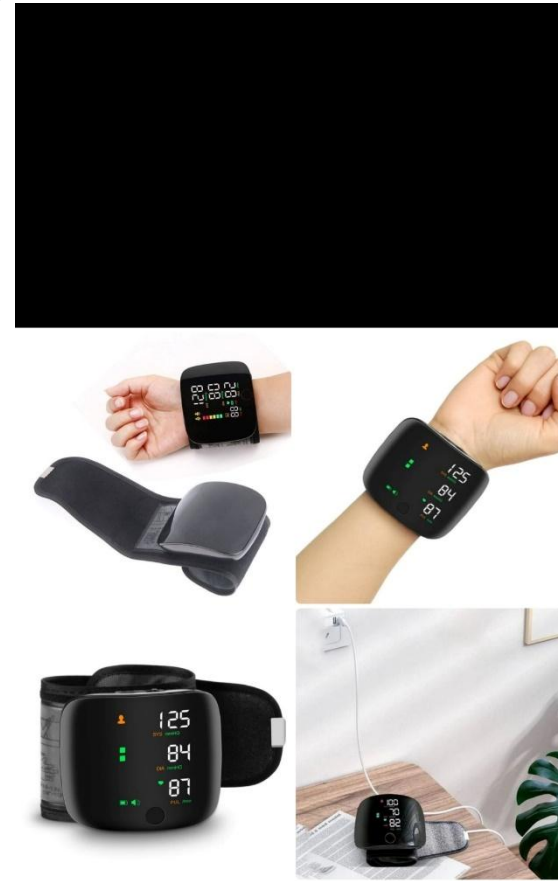
White in colour
Voice over speaker
Touch Button
LCD display
USB charging
Req. AAA Batteries

Purchase and get a
FREE
PULSE OXIMETER



R399

Wrist Auto BP Machine



Voice over speaker
Black in colour
LED touchscreen
USB Charging

Purchase and get a
FREE
PULSE OXIMETER



R599

COXO[®]

Professional Dental Manufacturer

**NEW
ITEM**

**+2x Handpieces, Scaler Tips,
Abrasive Powder &
Wireless Foot Control**

Ultrasonic Scaling
Implant and Ortho Maintenance
Minimally invasive Restorations
Perio/ Endo Treatments
Air Polishing and Abrasion

Purchase this month for :

R44 900

PROFESSIONAL Periodontal
Air Polisher System
PT MASTER
With
Wireless Foot Control





Promotional Price : R69 900
Built- in Led Scaler & Curing Light

FREE With Deal

Auxiliary Air/Water Quick Connector
Auxiliary Air/Water Valve
Auxiliary Built In Power Socket
Internal Spray Contra Angle

**MOBILE SELF CONTAINED DENTAL
DELIVERY UNIT incl Compressor**

**First 3 Customers for Receive FREE LED Fast Handpiece and Internal water Slow Set
(valued @ R6000)**

Anaesthesia

Oral Anesthesia Injector



ANXIETY
UNINSTALLING...

R4,990

Metric and Imperial
Needle Connection

**CRAZY
DEAL**

New Computer Controlled Anaesthetic Pen
Anxiety Beating / Stress Free Treatment

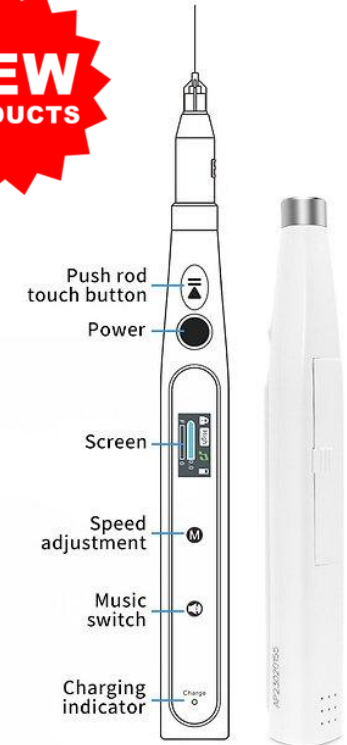
**NEW
PRODUCTS**

Screen:



1. Lock screen symbol
2. Speed adjustment
3. Music switch
4. Battery indicator
5. Injection dosage
6. Dynamic pressure feedback

Battery charging:



Now with Music option , Audible Chime and Voice activated dispensing prompt
Be that Dr. with the latest and most modern equipment, Your patient will love it and Praise you !!



Military Portable Unit 6 Holder

**CRAZY
DEAL**



R39900
Built in LED Curing Light and LED Scaler
High Speed LED Turbine and Slow Set for FREE

**CRAZY
DEAL**



Purchase with Portable Dental Chair, Dental Stool,
Spittoon and Examination Light
For R49,900
And receive the Heavy Duty Carrier Bag FREE!



Curing Lights

Max 1 per customer
First 3 Customers on each

SWAN 1sec Curing Light - Broad Spectrum Led - Premium Exclusive

- Constant Current Drive
- Wireless
- Dual Intensity Mode
- Hygienic
- Broad Spectrum Led-
Wavelength 385nm - 515nm

Features:

Dual intensity mode:

•P1 High intensity mode
Constant intensity: 2300-
2500mw/cm²

•P2 General intensity mode

Constant intensity: 1000-
1200mw/cm²

Broad-spectrum : Curing most materials

Ability to cure new photoinitiators
in the latest Composite resins.



R8,999 Max 1 per customer

Max cure 9 Wireless Curing Light 2000 MW/cm³

**NEW
PRODUCTS**



R3,999

Light power more than 2000mw/cm².
3 Distinct Modes: Strong, Flashing,
Gradually strong.
2600 mAh Large-capacity lithium battery.
5W Big power LED.
Full charging available use more than 200
times.
Automatic Standby/Automatic shutdown.

Maxcure 5 Wireless Curing Light 1800 MW/cm³

Power Input: 100-240VAC, 50Hz/60Hz
Power Output: 5V DC/1A
Wave length: 420 nm-480 nm
Light intensity: 1000mW/cm² – 1800mW/cm²
Battery voltage and capacity: 3.6V/2600mAh
Battery model ICR 18650-2600mAh

R2,999



Curing Light Promo

High Power
1s or 5s
Tips included:
Orange tip-carries
Green Tip – Fracture
Spot Cure
Long tip Cure and
various other tips
Magnetic attachment
to the head

R1,999



Curing Light Promo

Magnificent Branded

- High Power
- 1s or 5s
- Vibration feedback
- Metal Housing
- Metal Base
- Limited Edition Black

R 1899

Max 1 per customer



DISPOSABLE CHEEK RETRACTORS



R29.90
Single Packs

- Latex Free
- Allows Lips and cheeks to be fully Isolated
- Flexible and comfortable
- Single Use
- Medium Size
- Available as 20pcs per box

R478
Packs of 20pcs



Buy A Box and save 20%

DENTAL NOLA DRY FIELD CHEEK/LIP RETRACTOR SUCTION SYSTEM



Used In Various Oral Treatment Scenarios Such As Pit And Fissure Sealants, Posterior Restorations, Bonding Ortho Brackets, Teeth Bleaching / Whitening

- Dry Field System keeps the mouth dry while isolating arches from tongue and cheeks.
- High-heat plastic and silicone construction autoclavable to 135 degrees
- Great for sealants, ortho bonding, and posterior restorations
- Combined into each appliance is an adjustable cheek retractor, saliva ejector, tongue guard and low-volume suction connection.
- Specially designed not to cover occlusal surfaces of the teeth.

R899

•Launch Offer –
•Max 2 per Customer



Rubber Dam Promo Deal

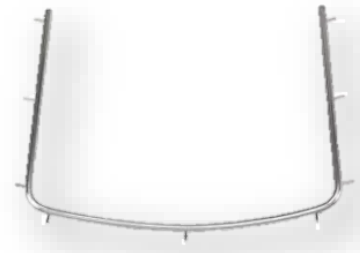
Buy the Rubber Dam Kit and
Receive the Box of Rubber Dam Material for FREE

RUBBER DAM CLAMPS x 6

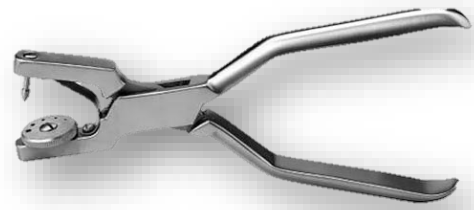


2x Anterior
2x premolar
and 2x molars

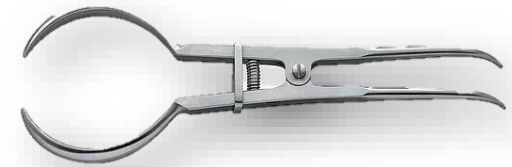
RUBBER DAM FRAME x 2



RUBBER DAM PUNCH



**RUBBER DAM CLAMP
HOLDER**



R1999

Available as :
5 x 5 in BLUE (52 sheets) or
Available also in 6 x 6 in GREEN (36 sheets)

Max 1 per Customer , 1st 5 Customers Only



Xray Positioner Kits

**NEW
PRODUCTS**



- Aligns film to prevent cone cutting
- Rounded bite blocks with no sharp edges improve comfort.
- Open bite block design offers patients a soft bite
- New bitewing shape with same-arch biting for a more closed bite

R1999



- Excellent Sensor Protection, For digital sensor with line
The clamp size can be adjusted for different imaging plates
- 1, (Green) For right maxillary upper premolar/molar and left mandibular
 - 2, (Blue) For left maxillary premolar and right mandibular premolar/molar
 - 3, (Yellow) For maxillary/ mandibular incisor -Anterior teeth

R 999

Twin Lights Oral Photography



Use with your
cellphone

SOLD OUT

IntraOral Photography Contrast Kit



R1,799

IntraOral Photography Mirror Kit



R1,599

RING Light Oral Photography



Now with Macro Lens
And Polaroid Filter
Use with your cellphone

R1,999

Black Contrast Cheek Retractor Twin Size



R480 Sold as Pair

Anti – Fogging Mirror Kit with Mirror Attachments



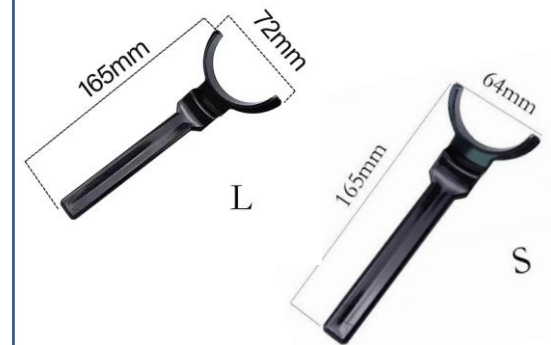
R1,999

Black Contrast Twin Lip Retractor



R280
Small or Large

Black Contrast Front Lip Retractor



R380
Sold as Pair Small or Large

**Intra Oral Camera System with
17" Monitor + 12 MP Camera**



R8,900

- 1. Upgraded 17inch Monitor
- 2. 1/4 CMOS high resolution 12MP intraoral camera
- 3. Built-in 4pcs high brightness long-life white LEDs
- 4. Intergrated image software and with dentist management software



**Intra Oral Camera System With Integrated Computer
Touch Screen + I5 Integrated Computer + HD Camera**



R19,900

- 1. Upgraded Wi-Fi + 23-inch touch computer screen all-in-one , can be operated by finger directly, or onscreen keyboard
 - 2. 1/4 CMOS high resolution 720p intraoral camera, high performance
 - 3. Built-in 4pcs high brightness long-life white LEDs
 - 4. Dentist management software
- 23-inch HD touch screen WIN10 32-bit flagship edition
processor Intel Core i5 CPU installation memory (RAM)8GB/128G
solid state disk 32-bit operating system built-in Wi-Fi
Optional Wireless Mouse and Wireless Keyboard

**CRAZY
DEAL**

**Intra Oral Camera System With Integrated
Computer Touch Screen + I5 Integrated Computer
+ 4K Camera With Smart Auto Focus**



R25,900

- 1. Upgraded Wi-Fi + 23.8-inch touch computer screen all-in-one , can be operated by finger directly, or onscreen keyboard
 - 2. 1/4 CMOS high resolution 1080p intraoral camera, high performance and auto focus.
 - 3. Built-in 6pcs high brightness long-life white LEDs
 - 4. Running 3D image software and with dentist management software
- 23.8-inch HD touch screen WIN10 64-bit edition
processor Intel Core i5 CPU installation memory
(RAM)8GB/128GB solid state disk 64-bit operating system
built-in wireless network card Cable socket +HDMI+VGA+USB

FREE OFFER:

Receive Free Intraoral Monitor Arm To Attach To Dental Chair

Max 1 per customer

Implant UV Activator



It can use vacuum ultraviolet rays to catalyze and activate the surface activity of implants

- Improve the rate of osseointegration
- Shorten the time of bone healing
- Accelerate the clinical osseointegration of dental implants and improve the success rate of dental implants.
- Improve bone contact rate (BCR)
- The BCR of Non-activated implants is about 50-60% and activated implants can increase to over 90%
- Shorten dental restoration time
- Dental restoration time: Reduced from 3 months to 1 month
- Expanding implant adaptation
- Improved implant success rate for high-risk dental treatment
- Rapid activation - Activation only takes 10s
- Ozone sterilization Built-in ozone filtration to prevent leakage
- Vacuum UV
- Ultra High Implant Compatibility (S, L, M1.4, M1.6, M2.0)

R89,900

Implant Stability Meter

Grand Launching Offer

It is a stability measuring device that uses tapping method, which measures the time of the Tapping Rod of the device contacting the implant. Used for for dentistry and dental implantology or oral cavity, or abutment, to measure the stability .

The result of the measurement is displayed in iST scale (implant Stability Test), which is the numerical representation of the Implant Stability Test (iST) value, and higher scale represents greater implant stability or lower implant mobility.

Characteristics

Convenient usage due to small and light design

Easy to use due to simple controlling method

Fast measuring time less than 3 seconds

Safe measurement due to slight tapping technique and auto safety system (tapping stops after tapping twice when Osseointegration is unstable, otherwise taps up to 6 times.)

Available to check possibility of implant failure at in earlier stages

This model is much simpler to use than the NSK model. With the NSK model, you need to install a probe on the implant first. With this model, you can see the ISQ value on the display screen by gently tapping the implant. From the numerical value Determine the stability of the implant.

Implant Stability Meter

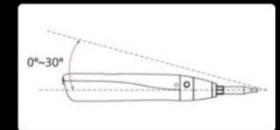
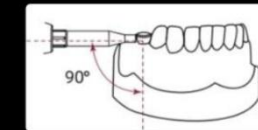


R24,900

2-step procedure



1. Carefully position the tip of the Tapping Rod to the upper edge of the healing abutment while being cautious not to push the abutment. When the Tapping Rod of the handpiece is located 90 degree from the side part of the top of the healing abutment and the ON/OFF switch is pressed once, the tapping motion starts after 0.5 second.



Remarks: The measured stability value is more accurate when the degree between the healing abutment and the Front Guide is closer to 90 degree. Maintain the contact angle within the range of 0° ~ 30° to upward when measuring. Due to the different bone widths in different directions of the implant, the measurement data will be biased. Try to measure the stability value from multiple angles to get a reasonable value.

2. An ISQ value is generated and shown on the LCD display. This reflects the level of stability on the universal ISQ scale -from 1 to 99. The higher the ISQ value, the more stable the implant.



If ISQ value appears as Red (01 to 59), the stability is not up to the standard.
If ISQ value appears as Yellow (60 to 64), the stability reaches the benchmark value.
If ISQ value appears as Green (65 to 99), the stability is good.

Remarks: Number of tapping: Tap 2 times until the measured value of 1-59. After 60-99, the device taps 6 times in order to measure the stability.

Implant Locator



R9,900

- Handy Piece of equipment in Implant Dentistry
- Especially for 2 stage dental implant Surgery
- Can have a minimal invasive uncovering of the implant with the Locator
- No more Guess Work !
- Work faster , easier , simpler and smarter !!

Price



We Cutting Prices – Rock Bottom !
Cheapest in SA Guaranteed !!



Super Suction Deals

Semi – Wet Suctions
High Quality and Efficiency
Built in Air/Water Separator
No extra tank required
12 month Warranty
Cost Effective . Affordable Solution

JW-X01- 1 Chair

Voltage (V): 220
Frequency (Hz): 50/60
Power (W): 400/500
Max Pumping (l/min): 800
Vacuum: -110
Net/Gross(kg) : 18/20
Size (mm) : 310*450*590
Noise (dB) : 53

R 22,900

JW-Y01- 1/2 Chair

Voltage (V): 220
Frequency (Hz): 50/60
Power (W): 700/800
Max Pumping (l/min): 1000
Vacuum: -130
Net/Gross(kg) : 25/30
Size (mm) : 310*450*635
Noise (dB) : 53

R 25,900

JW-X03- 3/4 Chair

Voltage (V): 220
Frequency (Hz): 50/60
Power (W): 940
Max Pumping (l/min): 1500
Vacuum: -150
Net/Gross(kg) : 36/44
Size (mm) : 385*485*615
Noise (dB) : 57-62

R 39,900

JW-W03- 4/5 Chair

Voltage (V): 220
Frequency (Hz): 50/60
Power (W): 1100
Max Pumping (l/min): 1800
Vacuum: -200
Net/Gross(kg) : 38/46
Size (mm) : 385*485*615
Noise (dB) : 58-62

R 49,900

Stainless Steel Cassette + 10 Hand Instruments



12 Pc Set

- 1 x Mirror Handle
- 1 x Mirror Head (regular)
- 1 x Explorer
- 1 x Perio Probe
- 1 x Thymosin
- 1 x Ball Burnisher
- 1 x Cord Packer
- 1 x Mixing spatula
- 1 x Excavator
- 1 x Plugger
- 1 x Gingival Margin Trimmer/ Flat Plastic
- 1 x Stainless Steel Cassette

R999

Max 1 per customer
Once Off Deal !!
Trial Offer Only !!

**CRAZY
DEAL**

CHEAPEST PREMIUM MULTI LAYERED Re-Useable DIAMOND BURS

R89,90 per pack of 5.

BC-31

BR-31

BR-41

F012

FO-29

FO-32

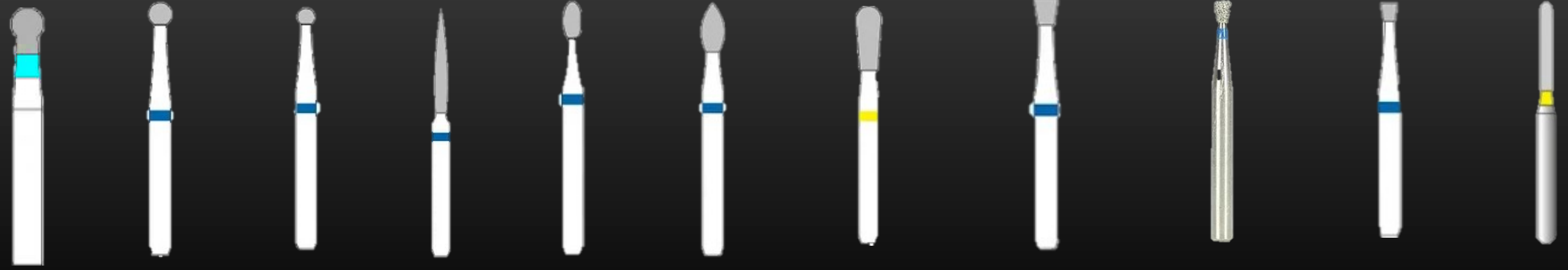
EX-21EF

SI-48

SI-47

SI-46

SR-11EF



We are the Cheapest for this QUALITY product in SOUTH AFRICA -UNDISPUTED !!!

WE WIN HANDS DOWN-MAXIMUM 3 OF THE SAME PACK SHAPED BURS PER DEAL !!!

TC-10

TC-21

TF-11

TF-12

TR-11

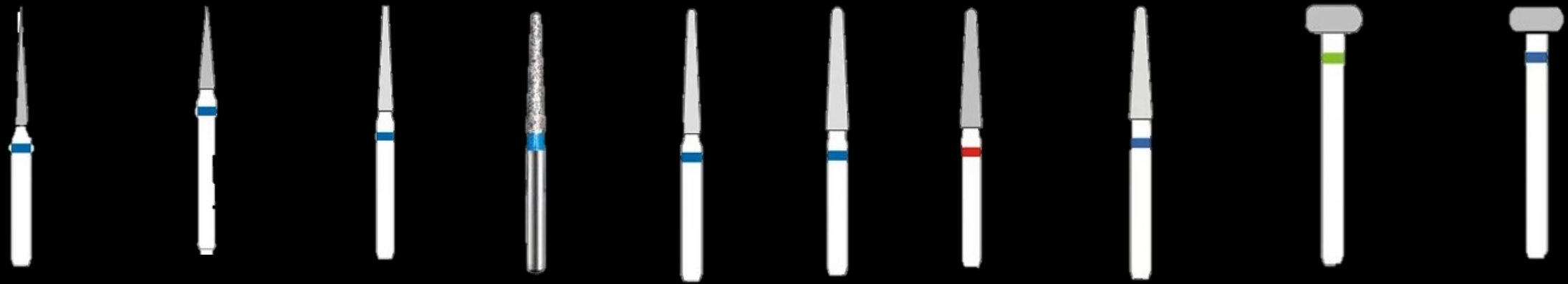
TR-12

TR-12F

TR-13

WR-13C

WR-13



TUNGSTEN CARBIDE BURS

PRICED IN PACKS OF 5 PCS

FG2



R299

FG4



R299

FG56



R199

FG330



R199

FG557



R199

FG1158



R199

FG1931



R339

FG1958



R339

FG2058



R339

FG7204



R359

FG7406



R359

FG7901



R359

FGXL4



R299

FGXL557



R299

HP6



R239

HP35



R239

HP700



R239

RA2



R299

RA4



R329

RA8



R359

RA557



R229

RAXL2



R299

RAXL4



R299

**CROWN CUTTING BURS MULTI-LAYERED-
FOR EXCELLENT CROWN PREPS**



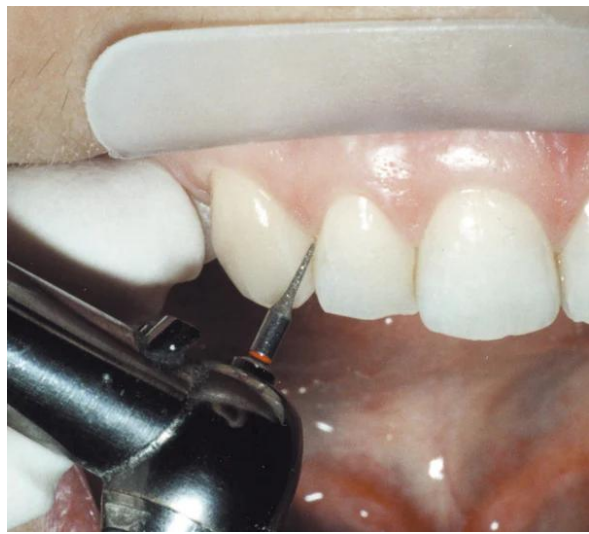
**MULTI-LAYERED INTERDENTAL
STRIPPING BURS**



SR-11c
(Course)



F0-21c
(Course)



ORTHODONTIC
WIZARD !!



R399

Pack of 5 Pcs

*Prep Like
a Boss!*

R399

Pack of 5 Pcs

**High Quality Premium Multi-layered
Re-useable Diamond Burs**



**Diamond Burs - 392-016F Inter
Dental Stripping Bur**

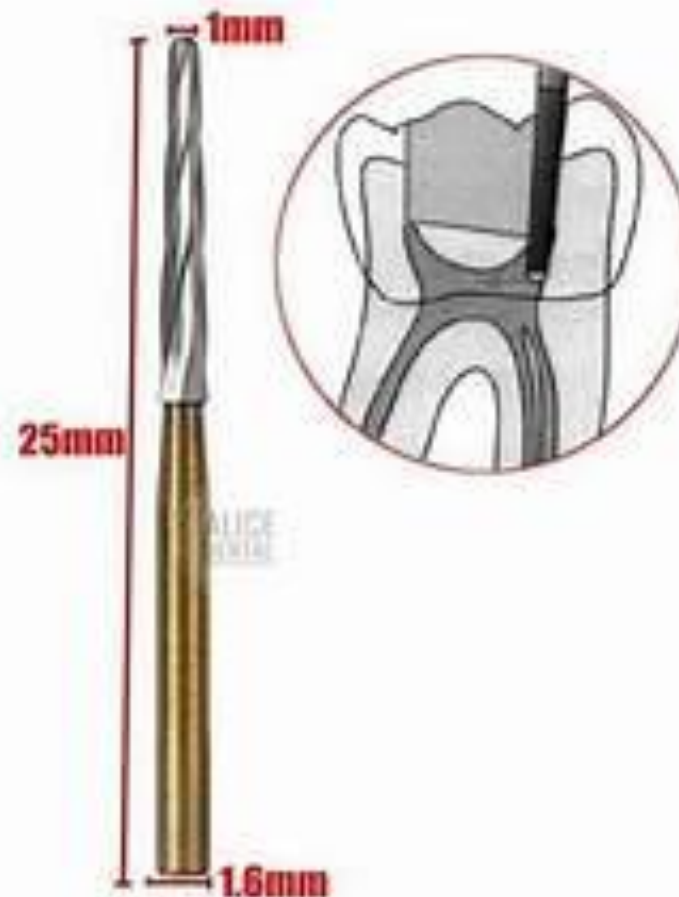
New Product !!
Carbide Bur FG-152XL
Endo Z – 25mm
Gold

Used in Endo –
Pulpal Floor Protection



152

R899 (5pcs)



High Quality Carbide Burs

PREMIUM DR STOOL



NOTICE:
These are Premium Stools With
Metal Legs and
Premium Castors

Colours:
Turquoise, Dark Blue , Yellow & White
Similar to Illustration

**DON'T
MISS
OUT!**

R3,999

PREMIUM ASSISTANT STOOL



**DON'T
MISS
OUT!**

Similar to Illustration

R1,999

PREMIUM DELUXE DR SADDLE STOOL



LIMITED EDITION
SADDLE DESIGN
ERGONOMIC
COMFORTABLE
STYLISH

Colours:
Lime Green & White
Similar to Illustration

**DON'T
MISS
OUT!**

R5,999

Various Colours
Max 1 per Customer
Last few Remaining
Get Yours !!!

EXCLUSIVE

PURCHASE

**Xray
Sensor**

**CRAZY
DEAL**

HDR 500 - Size #1



R 23,900

**Includes :
Regular Single user
version software
Free License and Registration
Great Deal !!**

HDR 600 - Size #2



R 24,900

**GET
IT
NOW**

**INTRA ORAL
CAMERA**



USB connection
High Quality Intra Oral Photos
Optional Network/ twain
Version

R5 999

**X-RAY
LEAD APRON**



**X-RAY
THYROID COLLAR**



Buy the combo deal
For Only

R4,999

ROOM ATOMISER
(360 DEGREES)



**CRAZY
DEAL**

ANION
DISINFECTANT
SPRAY GUN



Purchase any EXTERNAL DENTAL SUCTION and get the ROOM ATOMISER and ANION DISINFECTANT GUN for R1999

EXTERNAL
DENTAL
SUCTION
v.1.0

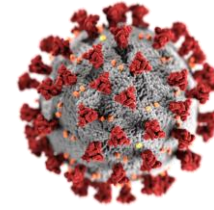


R7 900

EXTERNAL
DENTAL
SUCTION
v.2.0
LCD



R8 900



**A CLEAN
WORK AREA
IS A
SAFE
WORK AREA**

VIRUS  BUSTERS

 **SafeClean**
SANITATION

Purchase the UV CABINET and get
The UV LAMP & OZONATOR FREE



**AMAZING
DEAL**



R 6 999

WHAT'S
NEW

Endodontic Extravaganza



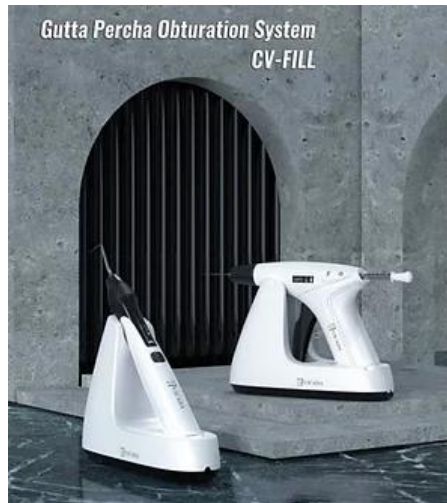
Sonic Irrigator + 30 Tips
Flexible polycarb tips

R3,990



R6,900

25 capsules of the Dual Purpose
Patented Twin Kleen Irrigating
Solution FREE with Sonic or
EndoSonic Irrigators



Warm GP Obturation
System

R9,900



Root canal irrigation and
suction system

R9,900



Endo File Retrieval System

R8,900

GET
IT
NOW

Endo Motor with Apex Locator



New version
Integrated Endo
Motor + Apex Locator

R9,900

FREE BOX OF TWIN KLEEN
FREE PACK OF TAPERED FILES

Wireless Endomotor

Ultra-quiet High torque Stable speed Wireless handle

FREE PACK OF
TAPERED FILES



FREE BOX OF TWIN
KLEEN with Purchase



Positive auto continuous-Auto Reverse
Reverse Reciprocating Motion
Reverse Auto Continuous –Auto Forward
Forward Reciprocating Motion
Turn of Automatic Reverse

Adjustable and User defined parameters

R3,999



GP CUTTER + TIPS



Tips Available
separately for R699

R999

V-TAPER FILES



R399

M3L LARGE TAPER GOLD FILES



R399

M3L PLATINUM FILES



R399

2 x FREE BOX Twin Kleen Single Step Root Canal Disinfectant

ENDO IRRIGATING NEEDLES



27G / 30G Box of 100's

R299

Maximum 1 of each
100 pcs in a box

GATES GLIDDEN ENDO DRILLS



#1 #2 #3 #4 #5 #6

R499 6 assorted sizes

ENDO H FILES



6 assorted sizes

ENDO K FILES



6 assorted sizes

**SURGICAL
BLADES**



#10, #15
#21, #22

SOLD OUT

**DISPOSABLE
SYRINGES 3ml**



R 3.99

**DENTAL GINGIVAL
RETRACTION CORD**



R 99

**FIBRE POST
REFILLS ONLY**



Available as
kit with drills
for R699 each

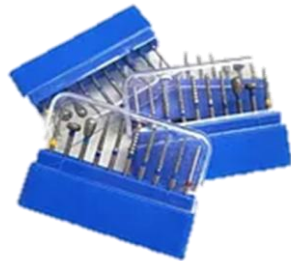
R 299
20 Pcs



**AUTOCLAVABLE
BUR HOLDER**



16 HOLE
SETTING



Buy 5 get
1 FREE
Bur Kit

R 299

**SILICONE RUBBER
MOUTH PROPS**



R 299 each

**AUTOCLAVABLE
ULTRASONIC SCALING KIT**



R2,999

**NEW MODEL NP CLASS
STEAM STERILIZER**

R29 900



**Manual Water Filling
FREE WATER DISTILLER**

**REGULAR N CLASS
STEAM STERILIZER**

SOLD OUT



Manual Water Filling

**REGULAR NM CLASS
STEAM STERILIZER**

R26 900



Automatic Water Filling

**WATER DISTILLER
(WHITE)**



R1999

WATER DISTILLERS (WHITE)

ULTRASONIC CLEANER

INSTRUMENT SEALING MACHINE



+



+



**Buy the Combo
Safety Deal !**

R12,490

18L B CLASS AUTOCLAVE



R44,900

DON'T MISS OUT!

23L B CLASS AUTOCLAVE



R49,900

10L HAETMED B CLASS A50B AUTOCLAVE



SUPER FAST CYCLE

R169 900

- +FREE DISTILLER (White)
- +FREE SEALING MACHINE
- +FREE ULTRASONIC BATH

PREMIUM WATER DISTILLER (STAINLESS STEEL)



SOLD OUT

INSTRUMENT SEALING MACHINE

DON'T MISS OUT!



R6 999

ULTRASONIC BATH



R5 999
3.2L

STERILIZATION ROLLS



- 50mm X 200M - R799
- 75mm X 200M - R999
- 100mm X 200M - **SOLD OUT**
- 200mm X 200M - R1 999

FORCEPS

R299

Buy 5 AND get 1 Absolutely FREE !!

LOWER PREMOLAR



F13

LOWER MOLAR



F22

LOWER ROOTS



F74

LOWER ANTERIOR & PREMOLAR



F75

LOWER COWHORN



**F86A/
F86C**

UPPER ANTERIOR



F1

UPPER CANINE & PREMOLAR



F7

UPPER MOLAR (RIGHT)



F17

UPPER MOLAR (LEFT)



F18

UPPER MOLAR UNIVERSAL



F18A

UPPER ROOTS



**F51/
51L**

UPPER MOLAR COWHORN (RIGHT)



F89

UPPER MOLAR COWHORN (LEFT)



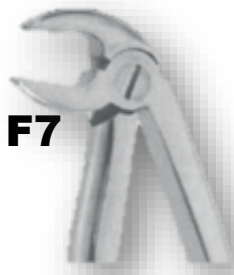
F90

PAEDO LOWER MOLAR UNIVERSAL



F6

PAEDO LOWER INCISOR



F7

PAEDO LOWER ANTERIOR



F162

PAEDO UPPER MOLAR UNIVERSAL



F3

PAEDO UPPER ANTERIOR



F39

PAEDO UPPER INCISOR



F139

ELEVATORS

R299

WARWICK JAMES
(LEFT TO RIGHT)



WARWICK JAMES
(RIGHT TO LEFT)



WARWICK JAMES
(STRAIGHT)



Buy the Right and Left and get the Straight FREE !

COUPLAND ELEVATOR
(MEDIUM)



COUPLAND ELEVATOR
(SMALL)



COUPLAND ELEVATOR
(LARGE)



Buy the Medium and Small and get Large FREE !



CRYERS LEFT
AND RIGHT

LONDON HOSPITAL RIGHT AND LEFT
LONDON HOSPITAL STRAIGHT



Buy the Right and Left and get the Straight FREE !

HAND INSTRUMENTS

R195

Buy 5 AND get 1 Absolutely FREE !!

PLUGGER



FLAT PLASTIC



EXPLORER



SPATULA



EXCAVATOR



BALL BURNISHER



BUY 10 AND GET 2 FREE – LIMITED TO 20 HAND INSTRUMENTS

THYMOSIN



**GINGIVAL MARGIN
TRIMMER**



AMALGAM CARVER



PERIODONTAL PROBE



CORD PACKER



MIRROR HANDLE



CROWN REMOVER



Double
Sided Only !

R 1950

SYRINGE



HINGE TYPE

SOLD OUT

Limited to 2 per customer

WEIDER RETRACTOR



R699

ATRAUMATIC EXTRACTION FORCEPS



R4 999

ROOT LUXATING KIT



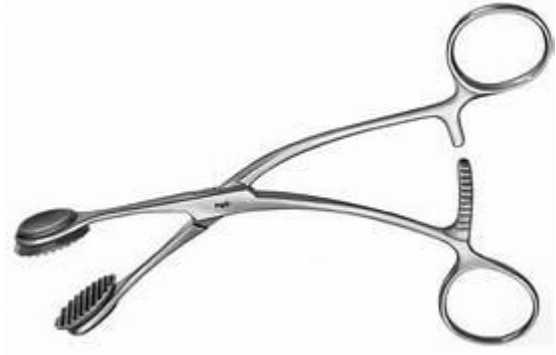
R3 999

AMALGAM CARRIER



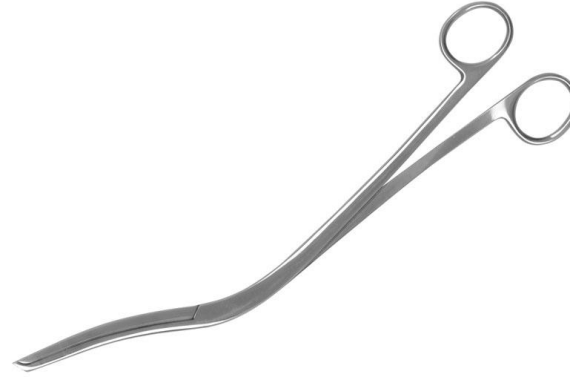
R 149

TONGUE FORCEPS



R 299

CHEATLE FORCEPS



R299

CASSETTE

STAINLESS STEEL 10PC SETTING

R799



Limited to 5 per customer

TISSUE RETRACTOR
BENDABLE



Available in silver only
38mm x 330mm , 25mm x 330mm

R 299

BONE CURETTE LARGE



R 299

BONE CURETTE SMALL



R299

PROSTHETICS

WILLES GUAGE



R399

PROSTHETICS

FOX PLATE



R399

CURVED SURGICAL
GUM SCISSOR



R399

Limited to 3 per customer Only !!

PERIOSTEAL ELEVATOR



R299

COTTON PLEDGET
DISPENSOR



R399

ORTHO WIRE CUTTER



R699

ORTHO DISTAL END CUTTER



R 799

ARTICUATING PAPER TWEEZER



R299

**DENTAL SCISSOR
PRECISION CURVED**



R399

**DENTAL SCISSOR
PRECISION STRAIGHT**



R399

Limited to 3 per customer Only !!

CUSHINGS SCALER



R199

SICKLE SCALER



R199

LIGATURE SCISSOR



R399

**TOFFELMIRE AMTRIX
BAND HOLDER -ADULT**



R299

**TOFFELMIRE AMTRIX
BAND HOLDER -CHILD**



R299

**STAINLESS STEEL
CHEEK RETRACTOR**



R399

**STAINLESS STEEL
GALLIPOT**



1 oz - R299

2 oz - R399

**BONE SCOOP FOR BONE
AUGMENTATION**



R299

**10 Pc COMPOSITE FILLING &
SCULPTING KITS**



R 999

High Heat Silicone
Strong Teflon coated
High Quality Product
Stainless Steel
No case

SURGICAL INSTRUMENTS

CASTROVIEJO NEEDLE
HOLDER OR SCISSOR



R599

MAYO HEGAR
NEEDLE HOLDER



R299

AUSTIN TISSUE
RETRACTOR



R299

BONE RONGEUR



R499

TISSUE FORCEP



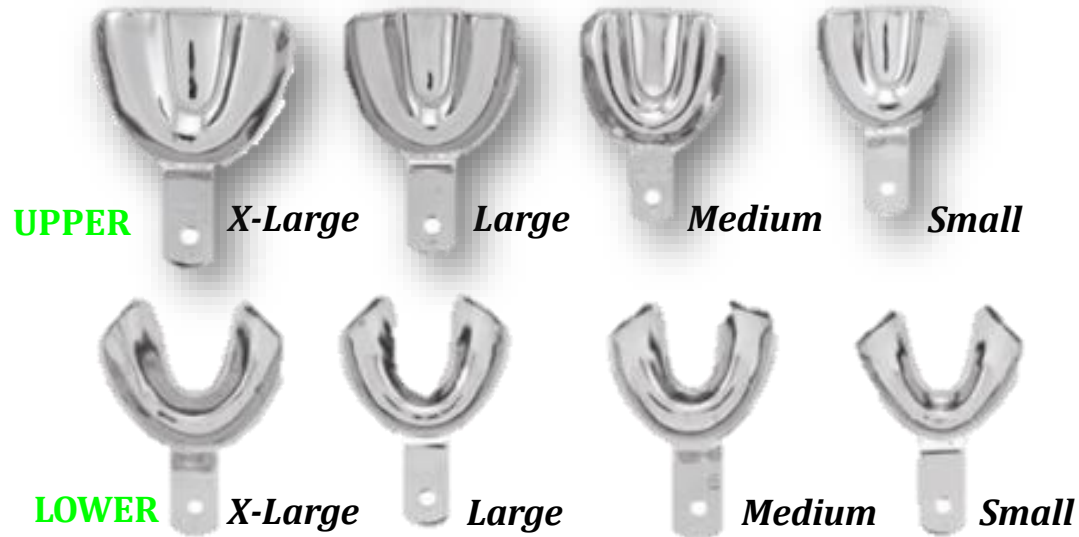
R299

SCALPEL HANDLE



R199

IMPRESSION TRAYS DENTURE SOLID



R199 EACH

IMPRESSION TRAYS PERFORATED



R199 EACH