

# MAGNIFIDENT

**Lucky  
Draw**



**JUNE**



**2 is Twice as NICE !**



**Stand a chance to win  
the 2 x Le Art LED featherlight Coloured Handpieces  
Only Purchases over R5,000 will qualify for the DRAW  
The More you Buy the higher the chance to WIN !!**

**FREE Delivery when Purchasing consumables over  
R2000**

Our Prices Are Vat Inclusive  
Check before you buy !

**IMPORTANT  
NOTICE**

**DON'T GET  
FOOLED**



**We Supply VAT Invoices  
which Means you save !!**

**CLEAR DENTAL SALIVA EJECTORS  
WITH REMOVABLE BLUE TIPS  
(100'S)**



**SPECIAL  
OFFER**

**R69.90**

**Maximum 5 Pkts**

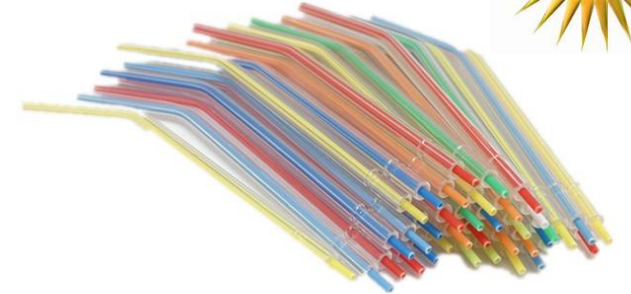
**Nitrile Gloves (100's)**



**SPECIAL  
OFFER**

**R49.90** **Maximum 5 boxes**

**DISPOSABLE 3-IN-1 SYRINGE TIPS  
MULTICOLOUR (Packs Of 250pcs)**



**SPECIAL  
OFFER**

**R299**

**Maximum 5 Pkts**

**Cleaning brush (Bur and Forceps)**

Pegasus Type Bur,  
Instrument and  
Forcep Cleaning  
Brush



**SPECIAL  
OFFER**

**R199**

**Max 2 per  
customer**

**CRAZY  
DEAL**

**550ml Lubricating Handpiece Oil**



**SPECIAL  
OFFER**

**R399**

**Expiry Aug 2026  
Max 3 per customer**

# Stainless Steel Cassette + 10 Hand Instruments



12 Pc Set

- 1 x Mirror Handle
- 1 x Mirror Head (regular)
- 1 x Explorer
- 1 x Perio Probe
- 1 x Thymosin
- 1 x Ball Burnisher
- 1 x Cord Packer
- 1 x Mixing spatula
- 1 x Excavator
- 1 x Plugger
- 1 x Gingival Margin Trimmer/ Flat Plastic
- 1 x Stainless Steel Cassette

**R999**

Max 1 per customer  
Once Off Deal !!  
Trial Offer Only !!

**CRAZY  
DEAL**

# Price



We Cutting Prices – Rock Bottom !  
Cheapest in SA Guaranteed !!



## Super Suction Deals

Semi – Wet Suctions  
High Quality and Efficiency  
Built in Air/Water Separator  
No extra tank required  
12 month Warranty  
Cost Effective . Affordable Solution

### JW-X01- 1 Chair

**CRAZY  
DEAL**

Voltage (V): 220  
Frequency (Hz): 50/60  
Power (W): 400/500  
Max Pumping (l/min): 800  
Vacuum: -110  
Net/Gross(kg) : 18/20  
Size (mm) : 310\*450\*590  
Noise (dB) : 53

**R 18,900**

### JW-Y01- 1/2 Chair

**CRAZY  
DEAL**

Voltage (V): 220  
Frequency (Hz): 50/60  
Power (W): 700/800  
Max Pumping (l/min): 1000  
Vacuum: -130  
Net/Gross(kg) : 25/30  
Size (mm) : 310\*450\*635  
Noise (dB) : 53

**R 23,900**

### JW-X03- 3/4 Chair

Voltage (V): 220  
Frequency (Hz): 50/60  
Power (W): 940  
Max Pumping (l/min): 1500  
Vacuum: -150  
Net/Gross(kg) : 36/44  
Size (mm) : 385\*485\*615  
Noise (dB) : 57-62

**R 39,900**

### JW-W03- 4/5 Chair

Voltage (V): 220  
Frequency (Hz): 50/60  
Power (W): 1100  
Max Pumping (l/min): 1800  
Vacuum: -200  
Net/Gross(kg) : 38/46  
Size (mm) : 385\*485\*615  
Noise (dB) : 58-62

**R 49,900**

**CHEAPEST PREMIUM MULTI LAYERED Re-Useable DIAMOND BURS**

**R89,90 per pack of 5.**

BC-31

BR-31

BR-41

F012

FO-29

FO-32

EX-21EF

SI-48

SI-47

SI-46

SR-11EF



**We are the Cheapest for this QUALITY product in SOUTH AFRICA -UNDISPUTED !!!**

**WE WIN HANDS DOWN-MAXIMUM 3 OF THE SAME PACK SHAPED BURS PER DEAL !!!**

TC-10

TC-21

TF-11

TF-12

TR-11

TR-12

TR-12F

TR-13

WR-13C

WR-13



# TUNGSTEN CARBIDE BURS

PRICED IN PACKS OF 5 PCS

FG2



R299

FG4



R299

FG56



R199

FG330



R199

FG557



R199

FG1158



R199

FG1931



R339

FG1958



R339

FG2058



R339

FG7204



R359

FG7406



R359

FG7901



R359

FGXL4



R299

FGXL557



R299

HP6



R239

HP35



R239

HP700



R239

RA2



R299

RA4



R329

RA8



R359

RA557



R229

RAXL2



R299

RAXL4



R299

# CROWN CUTTING BURS MULTI-LAYERED- FOR EXCELLENT CROWN PREPS



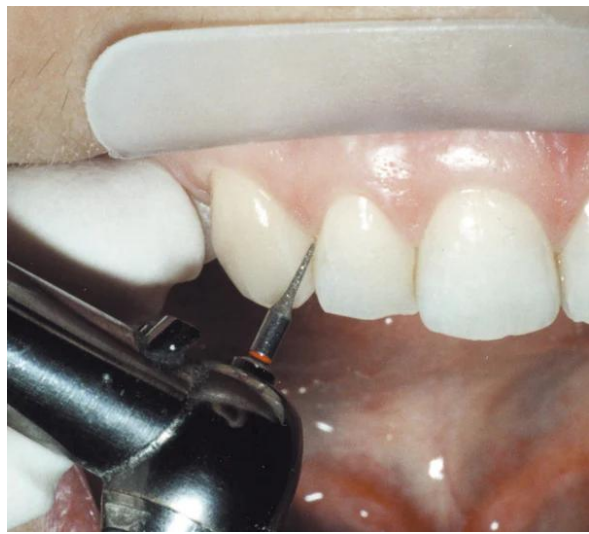
# MULTI-LAYERED INTERDENTAL STRIPPING BURS



SR-11c  
(Course)



F0-21c  
(Course)



ORTHODONTIC  
WIZARD !!



# R399

Pack of 5 Pcs

*Prep Like  
a Boss!*

# R399

Pack of 5 Pcs

High Quality Premium Multi-layered  
Re-useable Diamond Burs



Diamond Burs - 392-016F Inter  
Dental Stripping Bur

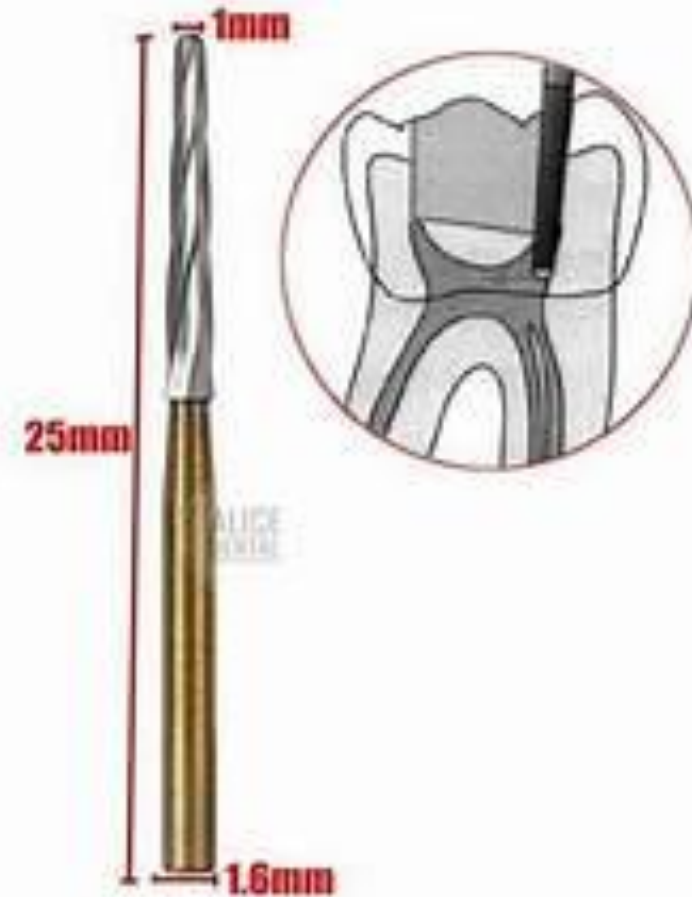
New Product !!  
Carbide Bur FG-152XL  
Endo Z – 25mm  
Gold

Used in Endo –  
Pulpal Floor Protection



152

**R899** (5pcs)



High Quality Carbide Burs

WHAT'S  
NEW

# Endodontic Extravaganza



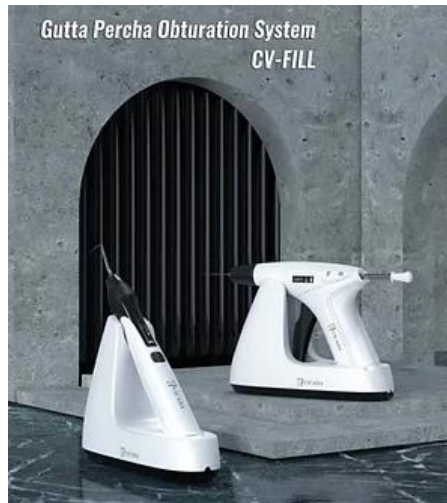
Sonic Irrigator + 30 Tips  
Flexible polycarb tips

**R3,990**



**R6,900**

25 capsules of the Dual Purpose  
Patented Twin Kleen Irrigating  
Solution FREE with Sonic or  
EndoSonic Irrigators



Warm GP Obturation  
System

**R12,900**



Root canal irrigation and  
suction system

**R12,900**



Endo File Retrieval System

**R9,900**

GET  
IT  
NOW

Endo Motor with Apex Locator



New version  
Integrated Endo  
Motor + Apex Locator

**R9,900**

FREE BOX OF TWIN KLEEN  
FREE PACK OF TAPERED FILES

# Wireless Endomotor

Ultra-quiet High torque Stable speed Wireless handle

FREE PACK OF  
TAPERED FILES



FREE BOX OF TWIN  
KLEEN with Purchase



Positive auto continuous-Auto Reverse  
Reverse Reciprocating Motion  
Reverse Auto Continuous –Auto Forward  
Forward Reciprocating Motion  
Turn of Automatic Reverse

Adjustable and User defined parameters

**R3,999**



## GP CUTTER + TIPS



Tips Available  
separately for R699

**R999**

## V-TAPER FILES



**R399**

## M3L LARGE TAPER GOLD FILES



**R399**

## M3L PLATINUM FILES



**R399**

**2 x FREE BOX Twin Kleen Single Step Root Canal Disinfectant**

# ENDO IRRIGATING NEEDLES



27G / 30G Box of 100's

**R199**

Maximum 1 of each  
100 pcs in a box

## GATES GLIDDEN ENDO DRILLS



#1 #2 #3 #4 #5 #6

**R499** 6 assorted sizes

## ENDO H FILES



6 assorted sizes

## ENDO K FILES



6 assorted sizes

# FORCEPS

# R279

Buy 5 AND get 1 Absolutely FREE !!

LOWER PREMOLAR

**F13**



LOWER MOLAR

**F22**



LOWER ROOTS

**F74**



LOWER ANTERIOR & PREMOLAR

**F75**



LOWER COWHORN

**F86A/  
F86C**



UPPER ANTERIOR

**F1**



UPPER CANINE & PREMOLAR

**F7**



UPPER MOLAR (RIGHT)

**F17**



UPPER MOLAR (LEFT)

**F18**



UPPER MOLAR UNIVERSAL

**F18A**



UPPER ROOTS

**F51/  
51L**



UPPER MOLAR COWHORN (RIGHT)

**F89**



UPPER MOLAR COWHORN (LEFT)

**F90**



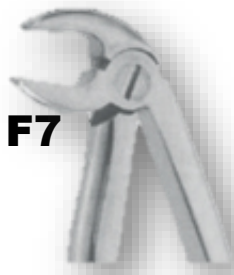
PAEDO LOWER MOLAR UNIVERSAL

**F6**



PAEDO LOWER INCISOR

**F7**



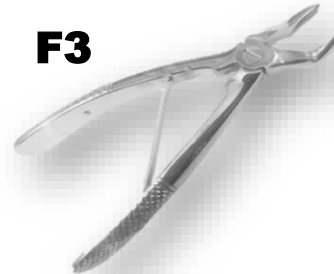
PAEDO LOWER ANTERIOR

**F162**



PAEDO UPPER MOLAR UNIVERSAL

**F3**



PAEDO UPPER ANTERIOR

**F39**



PAEDO UPPER INCISOR

**F139**



# ELEVATORS

# R279

WARWICK JAMES  
(LEFT TO RIGHT)



WARWICK JAMES  
(RIGHT TO LEFT)



WARWICK JAMES  
(STRAIGHT)



Buy the Right and Left and get the Straight FREE !

COUPLAND ELEVATOR  
(MEDIUM)



COUPLAND ELEVATOR  
(SMALL)



COUPLAND ELEVATOR  
(LARGE)



Buy the Medium and Small and get Large FREE !



CRYERS LEFT  
AND RIGHT

LONDON HOSPITAL RIGHT AND LEFT  
LONDON HOSPITAL STRAIGHT



Buy the Right and Left and get the Straight FREE !

# HAND INSTRUMENTS

# R179

**PLUGGER**



**FLAT PLASTIC**



**EXPLORER**



**SPATULA**



**EXCAVATOR**



**BALL BURNISHER**



**BUY 10 AND GET 2 FREE – LIMITED TO 20 HAND INSTRUMENTS**

**THYMOSIN**



**GINGIVAL MARGIN  
TRIMMER**



**AMALGAM CARVER**



**PERIODONTAL PROBE**



**CORD PACKER**



**MIRROR HANDLE**



## CROWN REMOVER



Double  
Sided Only !

**R 1950**

## SYRINGE



HINGE TYPE

**SOLD OUT**

Limited to 2 per customer

## WEIDER RETRACTOR



**R699**

## ATRAUMATIC EXTRACTION FORCEPS



**R4 999**

## ROOT LUXATING KIT



**R3 999**

## AMALGAM CARRIER



**R 149**

# PROSTHETICS

WILLES GUAGE



**R399**

# PROSTHETICS

FOX PLATE



**R399**

CURVED SURGICAL  
GUM SCISSOR



**R399**

Limited to 3 per customer Only !!

PERIOSTEAL ELEVATOR



**R299**

COTTON PLEDGET  
DISPENSOR



**R399**

ORTHO WIRE CUTTER



**R699**

ORTHO DISTAL END CUTTER



**R 799**

**ARTICUATING PAPER TWEEZER**



**R299**

**DENTAL SCISSOR  
PRECISION CURVED**



**R399**

**DENTAL SCISSOR  
PRECISION STRAIGHT**



**R399**

**Limited to 3 per customer Only !!**

**CUSHINGS SCALER**



**R199**

**SICKLE SCALER**



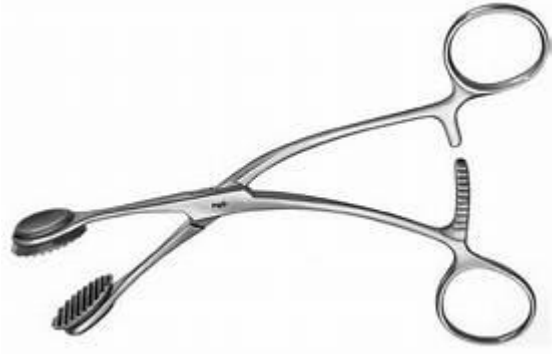
**R199**

**LIGATURE SCISSOR**



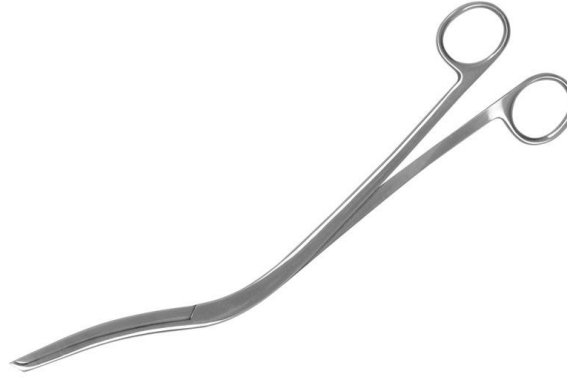
**R399**

**TONGUE FORCEPS**



**R 299**

**CHEATLE FORCEPS**



**R299**

**CASSETTE**

**STAINLESS STEEL 10PC SETTING**

**R799**



**Limited to 5 per customer**

**TISSUE RETRACTOR**  
**BENDABLE**



Available in silver only  
38mm x 330mm , 25mm x 330mm

**R 299**

**BONE CURETTE LARGE**



**R 299**

**BONE CURETTE SMALL**



**R299**

**TOFFELMIRE MATRIX  
BAND HOLDER -ADULT**



**R299**

**TOFFELMIRE MATRIX  
BAND HOLDER -CHILD**



**R299**

**STAINLESS STEEL  
CHEEK RETRACTOR**



**R399**

**STAINLESS STEEL  
GALLIPOT**



**1 oz - R299**

**2 oz - R399**

**BONE SCOOP FOR BONE  
AUGMENTATION**



**R399**

**10 Pc COMPOSITE FILLING &  
SCULPTING KITS**



**R 999**

High Heat Silicone  
Strong Teflon coated  
High Quality Product  
Stainless Steel  
No case

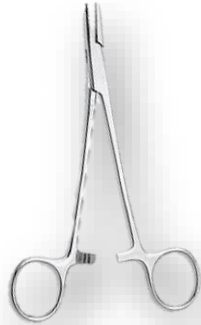
# SURGICAL INSTRUMENTS

CASTROVIEJO NEEDLE  
HOLDER OR SCISSOR



**R599**

MAYO HEGAR  
NEEDLE HOLDER



**R299**

AUSTIN TISSUE  
RETRACTOR



**R299**

BONE RONGEUR



**R499**

TISSUE FORCEP



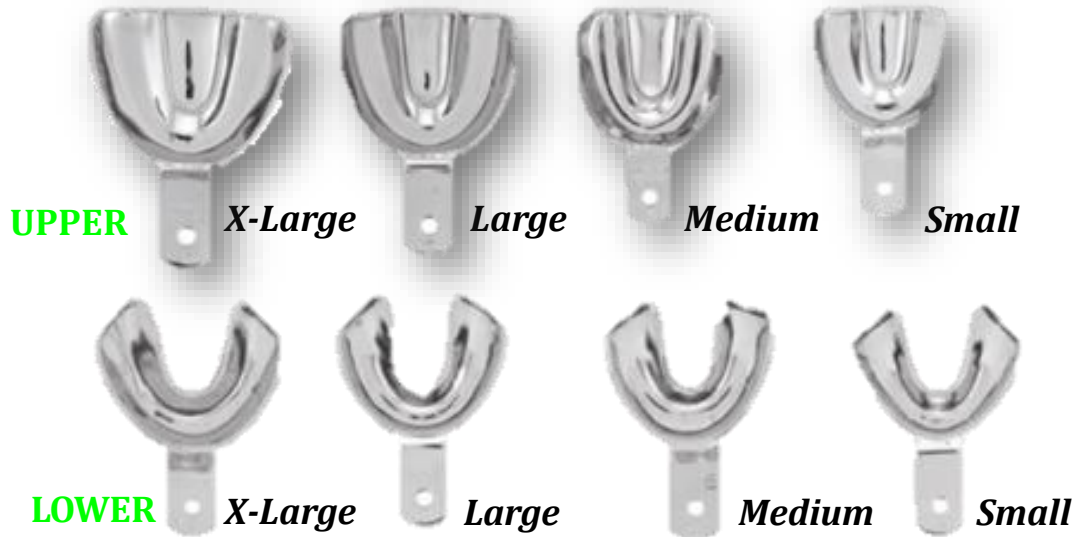
**R299**

SCALPEL HANDLE



**R199**

## IMPRESSION TRAYS DENTURE SOLID



**R199** EACH

## IMPRESSION TRAYS PERFORATED



**R199** EACH



National Environment Management Act, 1998  
Act No. 107 of 1998

Effective 31 March 2025

Deadline 31 March 2026

All dental facilities are required to comply with best management practices and requirements to operate and maintain an amalgam separator according to its manufacturer's recommendations, as required by the Act.

**DEADLINE HAS NOW PASSED**



#### 5. Phasing-down dental amalgam

- (1) Dental amalgam may only be used in pre-dosed encapsulated form which may not exceed 0.58 ml.
- (2) A person or an organ of state that owns or is in control of a dental facility in which dental amalgam is used, or where dental amalgam fillings or teeth containing such fillings are removed, must ensure that their facilities are equipped with amalgam separators for the retention and collection of amalgam particles, including those contained in used water.
- (3) The dental facilities referred to in subregulation (2) must ensure that amalgam separators in use from 1 April 2026, provide a retention level of at least 95% of amalgam particles.
- (4) Amalgam separators must be maintained in accordance with the manufacturer's instructions to ensure the highest practicable level of retention.
- (5) A dental practitioner may not release amalgam directly or indirectly into the environment under any circumstances.
- (6) A person or an organ of state that import or export dental amalgam capsules, must develop a Mercury Phase-down Plan for dental amalgam.



## AMALGAM SEPERATOR

Global certification, TUV tested,  
complies to BS EN ISO 11143.

2 year parts warranty

This is Europe's most cost effective Amalgam separator

Not electrical (no power required)

No running costs

No maintenance

No servicing

No hidden costs

Separate Installation (dependent on location etc)

Silent operation

100% recyclable

Fits both dryline and wetline suction systems

No rotors/collector cups

Easy fit

Up to 2 years usage without needing to be recycled

**COMPLIANT**



**Size 1**



**R 6,900**

Excludes Shipping and installation costs

Replacement Cartridges  
Available –  
Replace Every 2 yrs ONLY

Current cost of replacement cartridge is R1500 less  
than the cost of the New Cartridge

**COMPLIANT**

## AMALGAM SEPERATOR

Global certification, TUV tested,  
complies to BS EN ISO 11143.

2 year parts warranty

This is Europe's most cost effective Amalgam separator

Not electrical (no power required)

No running costs

No maintenance

No servicing

No hidden costs

Separate Installation (dependent on location etc)

Silent operation

100% recyclable

Fits both dryline and wetline suction systems

No rotors/collector cups

Easy fit

Up to 2 years usage without needing to be recycled



**Size 2**



**R 9,900**

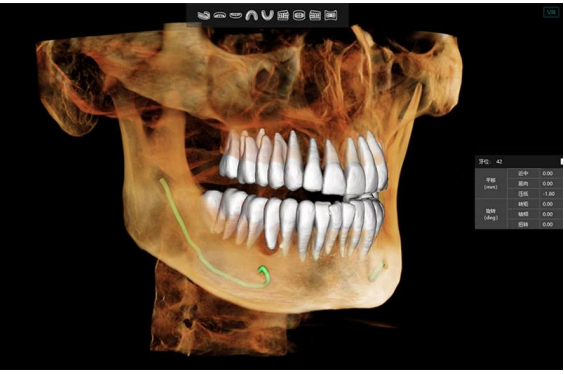
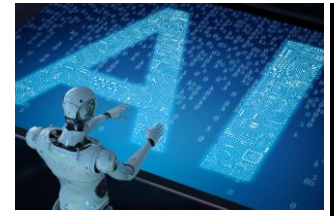
Excludes Shipping and installation costs

Replacement Cartridges  
Available –  
Replace Every 2 yrs ONLY

Current cost of replacement cartridge is R1500 less  
than the cost of the New Cartridge

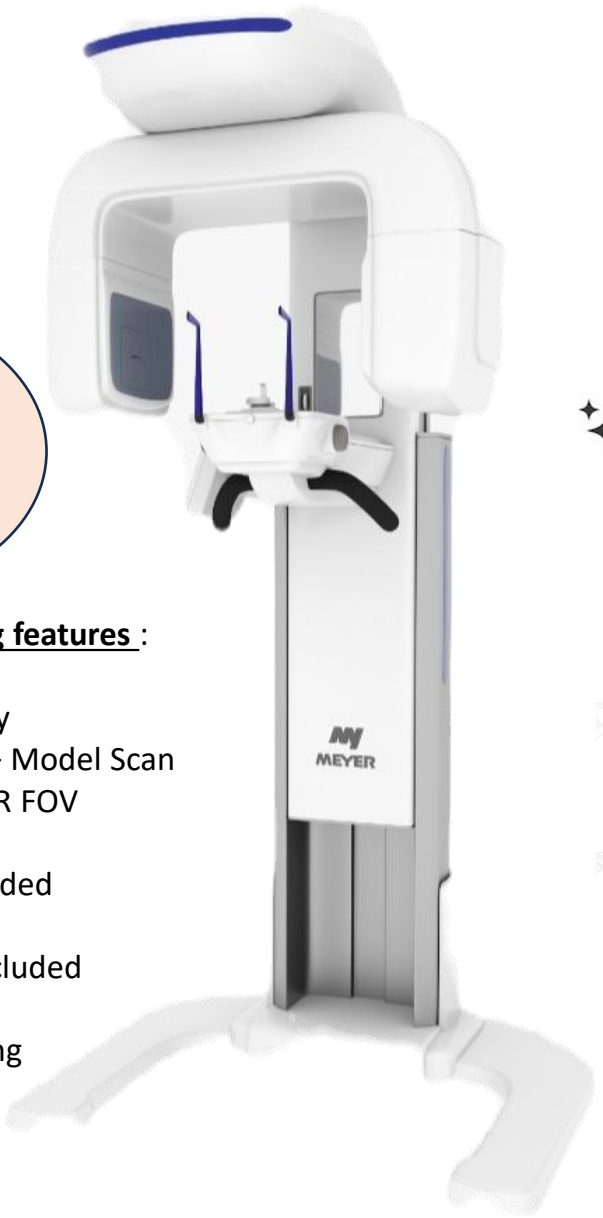
NEW

# MEYER CBCT "The Reliable Choice"



GET IT WHILE IT'S HOT!

Whatsapp  
0845837274  
For Brochure and  
more Details



# AI ARTIFICIAL INTELLIGENCE

# PROMO!

Take THE Leap

### Superior Quality

Clear imaging, meeting comprehensive clinical diagnosis and treatment needs

Rich functionality significantly enhances doctor-patient communication efficiency

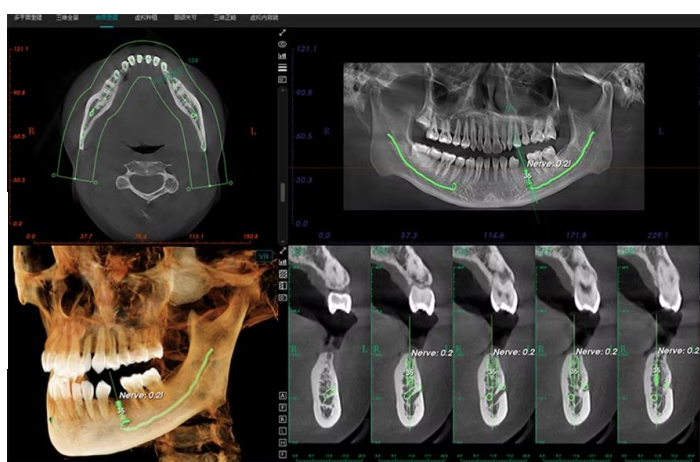
Super high Quality Dental CBCT Machine , with Artificial Intelligence

- Inferior Alveolar Nerve Tracing Ai
- Virtual EndoScopy with Video Playback Ai
- Root Canal Ai
- Optional Ceph with One click tracing Ai
- Orthodontic Tooth Segmentation Ai
- CPR - Curve Plane Reconstruction
- Smart Pan - Adult and Kids
- Maxillary Sinus
- Virtual Extraction and Implant Simulation
- Magic Button for Metal Artifact Reduction
- Model Scanning
- De-Noising

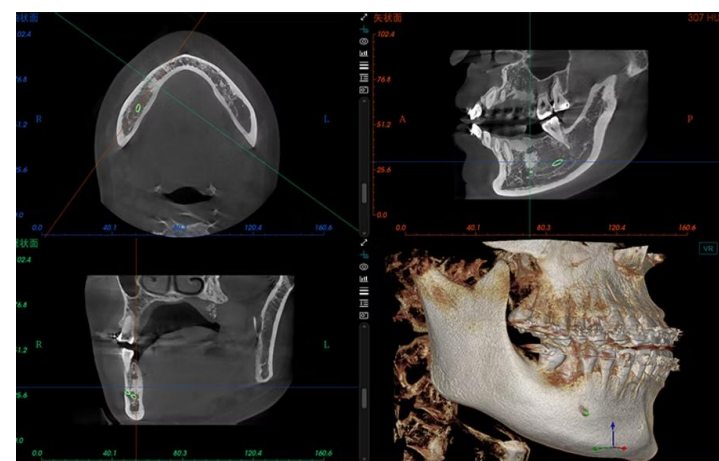
- Now with the following features :**
- Loaded with Ai Technology
  - CBCT and Pano Function + Model Scan
  - Upgraded to DUAL HIGHER FOV  
16 x 10 , 8 x 5
  - Computer + Monitor included
  - Floor Stand included
  - Standard 2yr Warranty included
  - Free Delivery in Gauteng
  - Free Installation in Gauteng



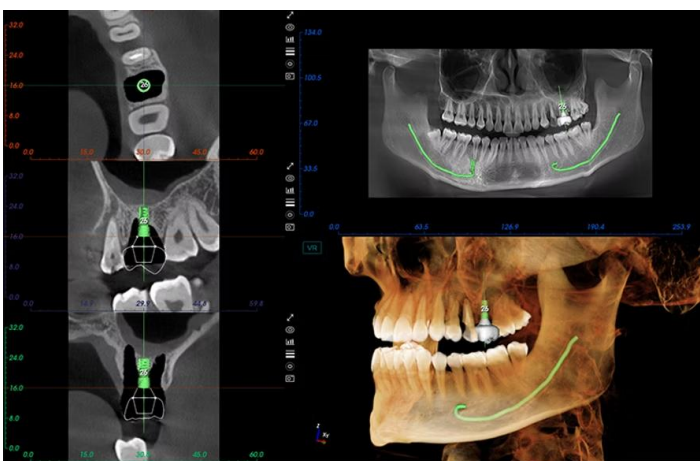
AI  
ARTIFICIAL  
INTELLIGENCE



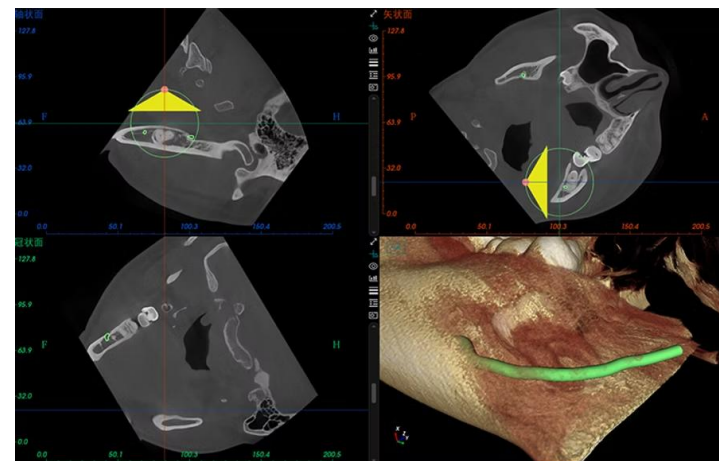
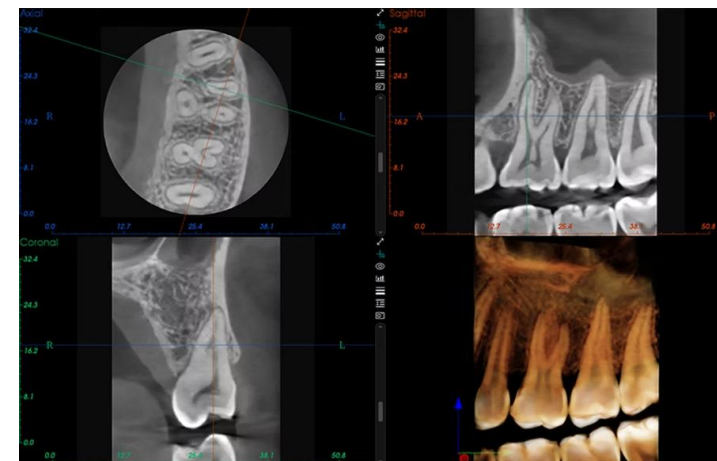
AI  
ARTIFICIAL  
INTELLIGENCE



AI  
ARTIFICIAL  
INTELLIGENCE



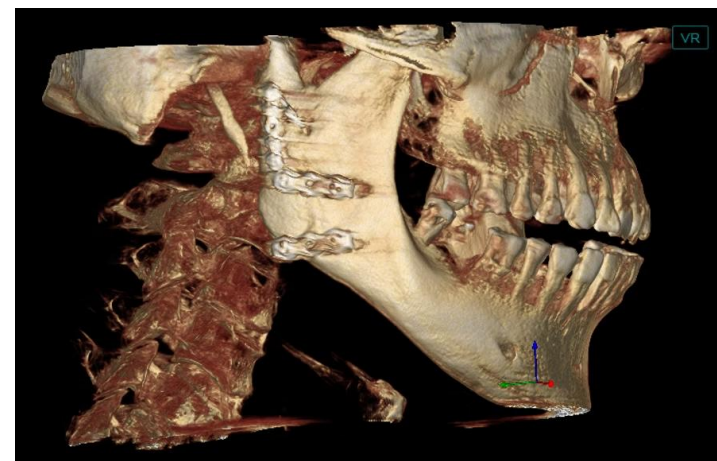
AI  
ARTIFICIAL  
INTELLIGENCE



AI  
ARTIFICIAL  
INTELLIGENCE



AI  
ARTIFICIAL  
INTELLIGENCE



# Portable Xray Combo Deal



**CRAZY  
DEAL**



**V-Light Premium  
Digital Portable Xray System  
HDR - Size One Sensor #1  
FREE Back Scatter Radiation Shield**

First 3 Customers Only

**R45 900**

First 3 Customers Only



# Portable Xray Only

**V-Light  
Portable  
X-ray**



**Free  
Backscatter  
Radiation Shield**



Tube Voltage	: 65kV
Tube Current	: 2.5mA
Focal Spot	: 0.4mm
Exposure Time Range	: 0.02-2s
Maximum Duty Cycle	: 1:30
Gross Weight	: 1.8Kg
Battery on Full Charge	: 500shots (0.5s)
Built in Smart Angulation	: Included
Dimensions (L300mm x W110mm x H250mm)	

**R27 9000**



**CRAZY  
DEAL**

Licence requires optional Xray Body Apron

**HDR 500 – Size #1**  
**High Quality**  
**IntraOral Xray**  
**Sensor**



**CRAZY**  
**DEAL**

**R 22,900**

**Maximum One Per Customer Lifetime !**  
**New Xray Sensor Customer ONLY !!**  
**Terms and Conditions Apply**  
**Size #2 available @ extra R3000**



# 2026 FULL Promo Package Deal with Amalgam Separator

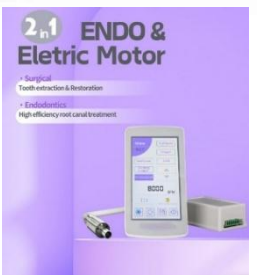
- 2026 Promo Chair – with Built in Electric Motor and Electric EndoMotor  
 Upgraded to 4 BULB LED Operator Light with Touchless Sensor ,1 x Stool  
 1 x Built in Whitening/ Bleaching Lamp  
 2 x Fast Turbine Handpiece Set  
 1 x Slow Set Handpiece Set – Latch Type  
 1 x Portable Xray Package Deal (Xray ,#1 Sensor, Xray Apron)  
 1 x IntraOral camera and Monitor  
 1 x 1-surgery 30L Oil-Less Compressor  
 1 x Built-in LED Curing Light  
 1 x Built-in LED Scaler  
 1 x 1-Surgery Semi-wet suction  
 10 x Adult Forceps 10pcs  
 7 x Paedo Forcep kit (7pcs)  
 5 x Stainless Steel Cassettes  
 50 x Hand instruments (5 sets)  
 1 X Free Adaptive Matrix Kit  
 1 X Rubber Dam Kit + 6 clamps  
 1 x White Distilled water generator  
 1 x Ultrasonic Baths (3.2L)  
 1 x Overshoe dispenser KIT+200 overshoes  
 1 x Instrument Wrapping Machine  
 1 x External Dental Aerosol Suction  
 1 x Handpiece Oil Adaptor Kit + 3 Oil  
 1 x Single Door UV Cabinet  
 1 x Room Atomiser  
 1 x 18L Class NM AutoClave (valued at R30k)

**Special Package Deals!**

**EXCLUSIVE**

*NB: Available in Blue , Green , Silver and Pink*

**R249 900**  
 Free Delivery and Installation in Gauteng Only ! T's & C's Apply  
 1st 3 Customers ONLY



# PROMO 2026 CHAIR

# PROMO SERIES

## 2 in 1 ENDO & Electric Motor

- Surgical  
Tooth extraction & Restoration
- Endodontics  
High efficiency root canal treatment

**CRAZY  
DEAL**



NB: Available in  
Blue , Green , Silver and Pink

**R79,900**  
**LIMITED EDITION**

- ✓ Luxury white Finish
- ✓ Upgraded to 4 Bulb LED Lamp
- ✓ Upgraded to 2 Arm Rests
- ✓ Upgraded to 3 Memory Programs
- ✓ Upgraded Assistant Control Panel
- ✓ Upgraded to Multifunction foot Control Panel
- ✓ Built-in Clean water System
- ✓ Built-in LED Scaler + Tips
- ✓ Built-in LED Curing Light
- ✓ Automatic Cup filler
- ✓ Glass Spittoon
- ✓ Sanitary PU leather Finish
- ✓ Double articulating headrest
- ✓ Free 1 x Dental Assistant Stool
- ✓ Free Fast Handpiece x 2
- ✓ Free slow Set
- ✓ Free IntraOral Camera System
- ✓ Free teeth Whitening System



**First 5 customers this MONTH  
get FREE Upgrade to  
Built-in 2-in-1 Electric Motor with  
Surgical Electric Motor  
Endo Electric Motor\***

\*Excludes ContraAngle handpieces  
Handpieces Sold Separately



# MDENT S2 PLUS

SMART 2+ Dental Unit  
with DUWL

Dental Unit Water Line  
Disinfection

# SILVER SERIES

**NOW IN STOCK**



SMART DESIGN

SMART

2+



- ✓ White Finish
- ✓ Upgraded to 4 Bulb LED Lamp
- ✓ Upgraded to 2 Arm Rests
- ✓ 4 Hole Midwest Connections
- ✓ 3 Memory Programs
- ✓ Built-in Clean water System
- ✓ Automatic Cup filler
- ✓ Rotatable Spittoon
- ✓ Built-in LED Curing Light
- ✓ Sanitary Cushion
- ✓ Double articulating headrest
- ✓ One Touch Disinfection-DUWL
- ✓ Free Dental Stool
- ✓ Built-in LED Ultrasonic Scaler
- ✓ 1 x Free LED Handpieces
- ✓ 1 x Free Slow Set
- ✓ 1 x Free Prophy AirJet
- ✓ 1 x Free IntraOral System

## LIMITED EDITION

### Built in Aseptic Disinfection System - DUWL

Effectively reduce the Multiplication of Bacteria  
and the accumulation of BIOFILM  
In the WATER LINE

- One Button Key Operation
- Fully Automatic
- Working Indicator Prompt
- Easy to Use
- Peace of Mind
- Covid-19 Enhanced System



**WOW!**

*NB: Available in Yellow/Orange & White*

# R89,900

With Built-in Scaler, Built-in Curing Light  
Free Dental Stool  
Free Fast and Slow Handpieces



# MDENT S3 PLUS

SMART 3+ Dental Unit

Knee Break Folding  
Dental Unit

## SILVER SERIES



丹特思®  
**Detes**  
DETES MEDICAL SUPPLIES



**NB: Available in Optional Cart System**  
**Choice of colours Available**

**R149,900**  
With Built-in Scaler, Built-in Curing Light  
Free Dr. Stool and Assistant Stool  
Free Fast and Slow Handpieces

Optional Extras:

- Available as Cart or Stand alone
- Available as Side delivery or Top Delivery Unit
- Available with Optional NEBULA Dental Lamp

- ✓ White Finish
- ✓ Upgraded to 6 Bulb LED Lamp
- ✓ 4 Hole Midwest Connections
- ✓ 3 Memory Programs
- ✓ Built-in Clean water System
- ✓ Automatic Cup filler
- ✓ Rotatable Spittoon
- ✓ Built-in LED Curing Light
- ✓ Built in LED Scaler
- ✓ Double articulating headrest
- ✓ Free Premium Dr. Stool
- ✓ Free Assistant Stool
- ✓ 1 x Free FAST LED Handpiece
- ✓ 1 x Free Slow Set
- ✓ 1 x Built in Electric Motor with Red Ring 1:5



# TOP 301-2025

ROTARY with DUWL

Dental Unit Water Line  
Disinfection



Includes the built-in  
Electric Motor And  
Handpiece

丹特思<sup>®</sup>  
**Detes**  
DETES MEDICAL SUPPLIES



High End Chair for the Up-Market Clinic  
**Chair Rotates 90 degrees- Innovation !**  
Seamless from consult to Examination  
You Clients will love it !!  
Automatic Disinfection Unit

# DIAMOND SERIES

**PRE ORDER**

Free 17" IntraOral Camera +  
Mounting Arm to Unit



Free Suction and compressor Included

Detes<sup>®</sup>  
DETES MEDICAL SUPPLIES



## R189,900

With Built-in LED Scaler and LED Curing Light  
integrated Electric Dental Motor and handpiece  
FREE Dr Saddle Stool and Assistant Stool

- ✓ 90 Degree Rotating Chair Seat
- ✓ Knee Break Chair
- ✓ Leather upholstery + Cushion
- ✓ Upgraded to 4 Bulb LED Lamp
- ✓ Optional Nebula implant Lamp
- ✓ Upgraded to 2 Arm Rests
- ✓ 4 Hole Midwest Connections
- ✓ 9 Memory Programs
- ✓ Built-in Clean water System
- ✓ Automatic Cup filler
- ✓ Rotatable Spittoon
- ✓ Central Disinfection System
- ✓ Built-in LED Curing Light
- ✓ Built-in LED Ultrasonic Scaler
- ✓ Double articulating Headrest
- ✓ Modern Dr's Stool
- ✓ Assistant Regular Stool
- ✓ 2 X Free Led Fast Handpieces
- ✓ 1 x Slow Set
- ✓ FREE IntraOral Camera System
- ✓ Built-in Electric Motor –includes  
FREE Red Ring 1:5 Handpiece  
worth R15,000

# 2 in 1 ENDO & Electric Motor

- Surgical  
Tooth extraction & Restoration
- Endodontics  
High efficiency root canal treatment



## Endodontic Function with reciprocating modes

Compatibility with different file brands:  
Dentsply, VDW, Sirona and ect.



# TECHNICAL PARAMETERS

- Product name: 2-in-1 endo & electric motor
- Speed Range: 100~40,000 r/min (rpm) (electric motor mode)
- Max torque: 4.2N.cm (electric motor mode)
- Speed Range: 200~1600 r/min (rpm) (endo mode)
- Torque range: 0.6-4N.cm (endo mode)
- Rotation: Forward/Reverse (electric motor mode)
- Rotation: Forward/Reverse/reciprocation (endo mode)
- Compatible contra angle: 1: 1/1:4.2/1.5/4:1/10:1/16:1/20:1
- Motor Size: Φ22mm xL70.4mm
- Motor Weight: 71g
- Noise:<60dB
- Motor Luminous intensity:>25000LX
- Output Voltage:AC24V, DC36V/3.33A
- PACKAGE SIZE:223\*184\*95(L\*W\*H)



Electric motor mode



Endomotor mode

## Electric motor with different contra angle



### 1:5 Contra angle

Constant speed and torque creates a smoother and more precise cut, work efficiency is 60% higher

### 1:1 Contra angle

For teeth Restoration, Polishing, grinding functions, etc.

### 4:1 Contra angle

Root canal treatment with built-in endo files of most famous brands

### 1:4.2 Contra angle:

Efficient tooth extraction

**R29 900**

- Free 1:5 optional Handpiece on Promo Only
- Free 1:1 optional Handpiece on Promo Only

1:5 High Speed  
For Electric Motor  
Red Ring  
With Fibre Optic  
Available as  
Internal/External



Restorative

**R6 999**

1:4,2 High Speed  
For Electric Motor  
Red Ring  
With Fibre Optic  
Available as  
Internal/External



Surgery

**R7 999**

1:1 Slow Speed  
For Electric Motor  
Blue Ring  
With Fibre Optic  
Available as  
Internal/External



Conservative

**R5 999**

4:1 Slow Speed  
For ENDO Electric  
Motor Green Ring  
With Fibre Optic  
Available as  
Internal/External



Endodontic

**R6 999**

1:20 ContraAngle for Implant  
Surgery With Fiber Optic



Implantology

**R7 999**

1:1 Straight Handpiece for  
General Surgery With  
Fiber Optic



Surgery

**R7 999**

**HANDPIECES for  
Electric Motor**



### KIDDIES DENTAL UNIT

**FREE MULTI  
MEDIA  
TABLET**

Includes Scaler  
and Curing light



**R89 900**

### DINO + CAT ANIMATED DENTAL UNIT

**FREE MULTI  
MEDIA  
TABLET**



**R129 900**

### FANTASY KIDS DENTAL UNIT



**R139 999**



# COXO INTRA ORAL SCANNER

Now From  
**R 59,900**



**BITE YOUR TEETH INTO TECHNOLOGY** ✦

# IntraOral3D scanner

**CRAZY  
DEAL**



**AoralScan 2**

- Cost Effective Scanning Solution !!
- Ergonomic Design – PEN Grasp
- Convincing scanning speed – 1min for the upper jaw, less for the Lower
- Light weight of only 350g ,
- High resolution up to 10 um, 15fps video
- Low inlet height of only 14mm
- Impressive field depth of 17mm
- 2 Tips included for adult and kids
- Specifically designed for dental industry
- Smooth Speed imaging
- Realistic HD Colour
- Powder FREE scanning
- Adopts AI Technology – Smart Technology
- Portable ergonomic pen design
- Natural Anti shake Technology
- Built in Anti-Fog Function
- 2 Autoclavable Tips
- Open format support for STL, PTY etc.
- Includes Scanning Software
- One License activation
- No mandatory updates or License Fees
- 6-month Warranty
- 5 GB Cloud Access Platform
- No Yearly Fees

**R 79,900**



**UNBEATABLE  
DEALS!**



Now Wireless with Battery Pack

Product Model: AR HEAD LOUPE

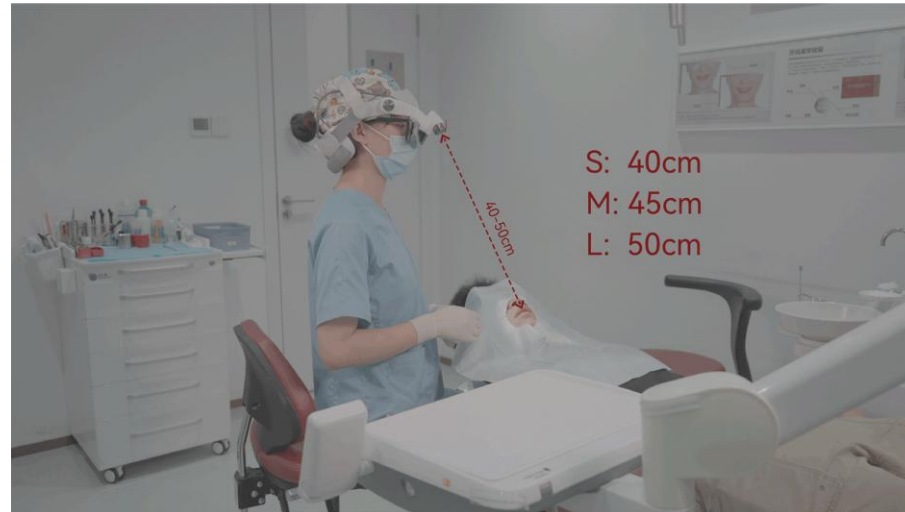
Magnification: 3.5X/5X/7.5X/9X

Control method: Remote control

Connection method: Wireless connection

Note: Foot pedal control is optional.

\*The highest multiplier is achieved by adding a 15% digital amplification.



**R69 900**



# IDEAL MICROSCOPE AND LOUPE COMBO



The AR Magnifying Loupe merges augmented reality with advanced magnification, providing exceptional clarity for dental professionals. With Microscopes the entire Complete system needs to move while AR Loupe is able to move Freely

### Reduce Back & Neck Strain

Weighing only 250 grams, the headset allows for better posture without bending or squinting.

### Ergonomic Comfort

Engineered for extended use, ensuring comfort during long procedures.

### Zoom Functionality

Easily zoom in or out on fine details (options of 3x/6x or 4x/8x).

### Compatible with Glasses

Designed to accommodate glasses for clear vision and comfort.

### LED Lighting & Adjustable Color Temperature

Improves visibility for accurate diagnoses and precise color matching.

### High-Resolution Imaging

Offers real-time high-resolution visuals for detecting fine cracks and enamel variations.

### Real-Time Connectivity for Consultations & Training

Connect the headset to external displays like monitors, TVs, or projectors for enhanced viewing.



## Augmented reality

•Interactive experience of a real-world environment enhanced by computer-generated perceptual information spatially registered to the user's environment



**AUGMENTED REALITY**

3x/6x Magnification  
4x/8x Magnification



**R39 900**

# COXO<sup>®</sup>

Professional Dental Manufacturer

## PRO IMPLANT / SURGICAL MOTOR SYSTEM - FIBRE OPTIC



Includes 20:1 Handpieces

# R27,900

Max 1 per customer ,  
First 3 Customers Only



## SURGICAL IMPLANT HANDPIECE FOR ELECTRIC MOTOR 20:1



**R7 999**  
Non Fibre Optic

**R8 999**  
Fibre Optic

## SURGICAL Fibre Optic HANDPIECE FOR ELECTRIC MOTOR

1:1



**R8 999**  
EXTERNAL  
IRRIGATION

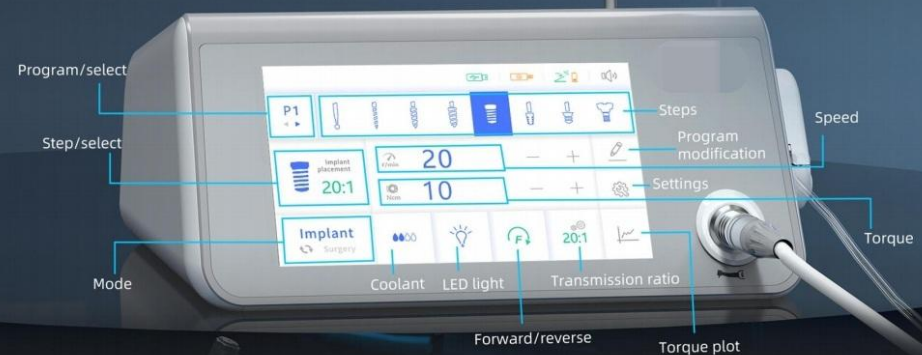


50% Discount on Handpieces when Purchasing Motor  
Maximum of 2 extra Handpieces

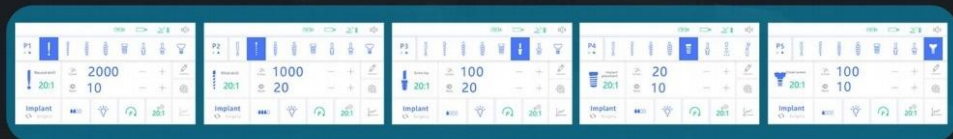
# Implant mode & Surgery mode 2 in 1

## •Implant mode

12 Optional steps,  
help you create your own planting process



5 Memorized Programs  
Dentists can set 5 programs with different data



## •Surgery mode

8 Different programs, meet all your need



# DELUXE Electric Motor



**R49,900**

**Free Handpieces**

1 x 1:5 CA Red-Ring Fast Handpiece , or  
1 X 20: 1 Contra-Angle Implant Handpiece

Max 1 per customer  
First 3 Customers receive  
FREE Handpieces

# 3-IN-1 MACHINE

*Surgery XT-II*



**IMPLANT MOTOR  
SURGICAL MOTOR  
PIEZO SURGERY**



Most versatile and packed equipment with small foot print  
Big Variety of Dental procedures covered,  
from Implants to Surgery, Restorative and Piezo Function –  
its got it ALL !!

Wireless or Wired Foot Control (works both ways)

**Includes :**

- Piezo Handpiece + Tips Included
- 1:5 Fast LED Handpiece
- 20:1 Implant LED Handpiece
- 1:1 Straight Surgical Handpiece Included

12 month Warranty



COMPACT  
EASE OF USE  
QUALITY PRODUCT

**R 79,900**  
Limited to the First 3 purchased  
In this Month  
Maximum One Per Customer Lifetime offer !  
Terms and Conditions Apply

# MAX PIEZO SURGERY III

Ultrasonic frequency micro-oscillation of Max Surgery III is an ideal solution for minimally invasive surgery, ultrasonic osteotomy, and more dental diagnosis & treatment.

The Max Surgery Ultrasonic Surgical System has 4 modes: Bone Cutting, Periodontics, Endodontics Treatment, Cleaning and is equipped with various ultrasonic working tips for different applications.

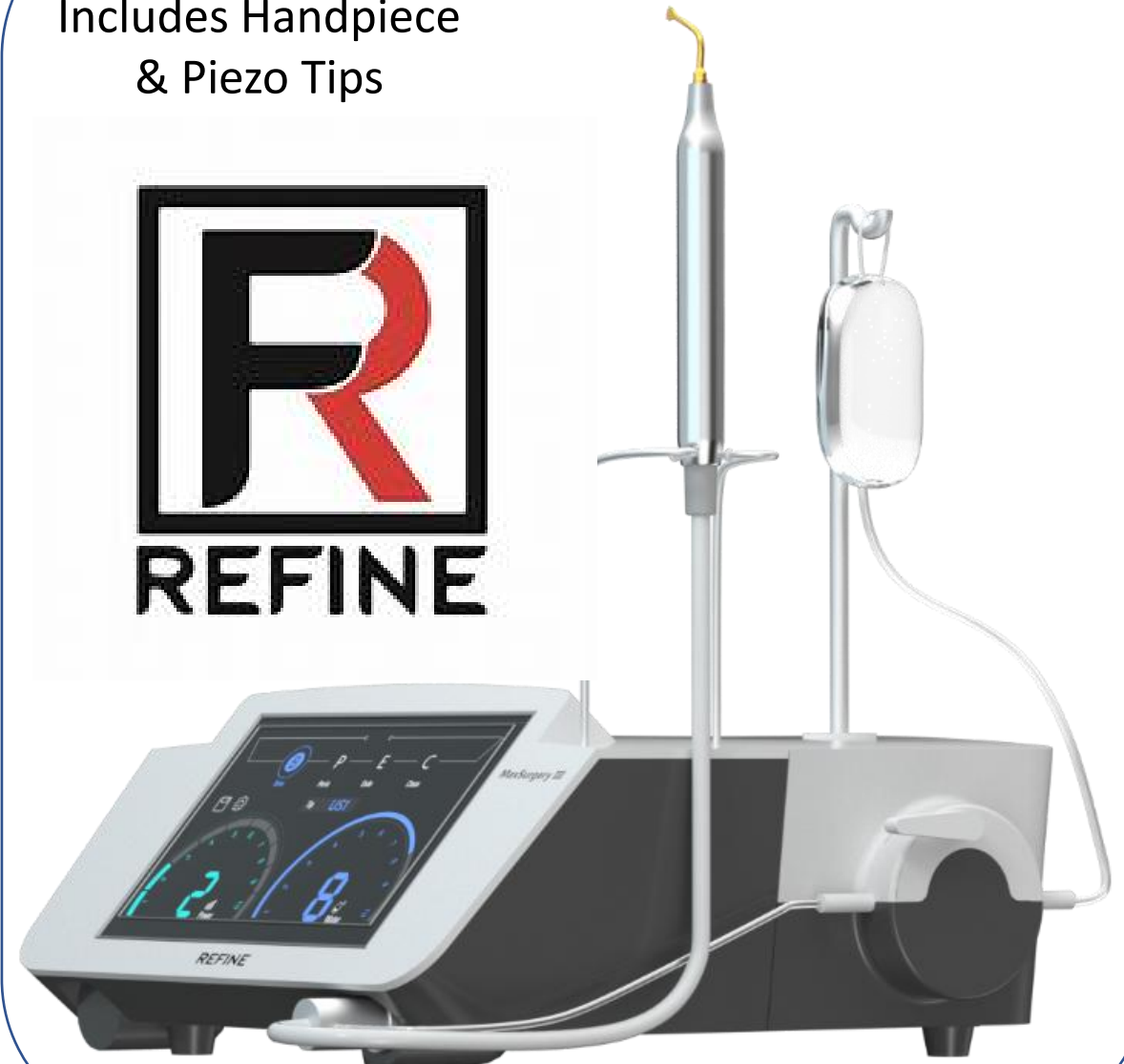
Minimal incision 3.5mmx0.5mm and No damage to soft tissues are its remarkable features. Thus, ultrasonic bone cutter Also, help surgical dentists to accomplish a minimally invasive surgery precisely & effectively.

The ultrasonic bone surgery device helps to maintain patient comfort following the trauma of tooth extraction.

Also, it has autoclavable highly efficient handpiece, multi-function pedal for water volume adjustment, mode switching, power adjustment and autoclavable cable to avoid cross-infection.

**R39,900**

Includes Handpiece  
& Piezo Tips



# DENTEX®

# NEW



**UNBEATABLE  
PRICE**

DENTEX DX.FLOW Dental Nano Flowable  
Light Cure Composite Material

Advantages:

1. Excellent polishing feature and strength.
2. Radiopaque.
3. Fluoride releasing.

Packages:

2g\*2( available as A1,A2,A3,),Tips\*10

Available in different viscosities

High Flow

Super Low Flow

Perfect for to fill after enameloplasty and  
micro enamel abrasion procedures too .

# R149

Per syringe – Max 4



## 5<sup>th</sup> Generation Bonding Liquid

**SPECIAL OFFER**

# R299

Max 1 per customer



BOND V dental adhesive is a single component for total etch technology. It can be used widely in dental clinic for all direct and indirect restorations. It also works well for enamel with total etching technique

Expires Aug 2027

## 7<sup>th</sup> Generation Bonding Liquid

**SPECIAL OFFER**

# R599

Max 1 per customer



- 1.DX.BOND VII contains MDP monomer which creates chemical interlock with enamel and dentin.It can also generate very good water-proof seal.Therefore the bonding strength is very high and long lasting.
- 2.There is no need to etch dentin before applying adhesive.It is really time saving and easy to use.
- 3.For enamel bonding,DX.BOND VII is optional for selective etch technology when high bonding strength is required.A separate enamel etching can be applied to get better enamel bonding result.

Expires Jan 2028

**Limited Stock , Get yours before they All Gone**

Fixing Porcelain fused to metal crowns and bridges need not stress you out



Neither should fixing All ceramic or Zirconia Crowns and Bridges

All Easily sorted with the Dentex Fracture Repair Kits

## DENTEX DENLINK

### Porcelain Fracture Repair Kit

Fix PFM fractures and chips , As well As Zirconium and Veneers



- \*Porcelain Etch
- \*Metal Primer
- \*Zirconia Primer
- \*Bonding Liquid
- \*Metal Mask
- \*Resin Repair Material

Expires July 2026

# R1,699

Max 1 per customer



## UNIVERSAL LIGHT CURING DENTAL RESIN

Direct restoration for all class caries.

Restoration of teeth defect and veneer.

Package:

Light Cure Composite: 4g/Syringe\*5

(A1 A2 A3 A3.5 B1)

Syringe Needles : 5pcs/ box\*1

Total Etching Adhesive: 5ml/Bottle\*1

Etching Gel: 5ml/Syringe\*1

Applicators Brushes: 20pcs/box\*1

Net weight: 188.4g

Expires October 2027

# R1,599

Max 1 per customer





## NANO HYBRID

Ideal for Direct Composite Veneers

### INDICATIONS FOR USE:

Direct restoration for all class caries.

Restoration of teeth defect and veneer.

### Package:

Light Cure Composite: 4g/Syringe\*

COLOUR: EA1,EA2,EA3, DA2,DA3,CL

Syringe Needles : 5pcs/ box\*1

Total Etching Adhesive: 5ml/Bottle\*1

Etching Gel: 5ml/Syringe\*1

Applicators Brushes: 20pcs/box\*1

Net weight: 188.4g

5 x Silicone Brush Set FREE!!  
For the first 5 Customers



Expiry November 2027

# R1,999

Max 1 per customer





DENTEX AIR-BLOCK STRIP Oxygen Isolation Gel



**R199**

Max 2 per customer

Expires May 2028



DENTEX DX.Etch 37 Etching 10ml

Expires May 2028

**R259**

Max 2 per customer

Max 2 per customer

Available in

- A1
- A2
- A3
- B1
- B2



Expires May 2028



**DX.Universal/Anterior/Posterior Nano Hybrid Light Cure Composite** is a light curable composite. It can be used for anterior and posterior dentine and enamel restorations. The inorganic filler loading is from 75 % to 82% by weight. The particle size varies from 0.03 to 5 microns.

DX. Universal

Light Curing Composite Resins family, the first choice for reconstruction of tooth defects.

DX. Universal Composite is a light curable composite. It can be used for anterior and posterior dentine and enamel restorations. The inorganic filler loading is 82% w/w

. The particle size varies from 0.002 to 5 microns.

Indications:

It is suitable for restoration of Class I to V cavities including tooth defect, inlay, veneer and core building up.

Advantages:

- High versatility. It takes care of either dentin or enamel restorations
- Moderate viscosity and non-sticky handling
- Excellent plasticity and great handling
- High radio opacity
- 2g Syringe
- Long Shelf life

**R259**



Purchase All 3 items for the Low cost of

Max 1 Deal per customer

**R599**



**Indications:**

Used for temporary filling for all class cavities, implant screw sealing, temporary filling the cavity for inlay/onlay or root canal treatments.



Expires Nov 2028



**Indications:**

Used for a single or multi temporary repairs in clinic  
Used for temporary crown and bridge before permanent restoration  
Inlay/Onlay and overlay  
Available as A1, A2 and Bleach White

**R1899**

**R899**



**Indications:**

It is suitable for Core build up, bonding for crown, bridge, inlay/ onlay, filling for special deep cavity restoration

Expires Oct 2027

Expires Oct 2027



**Indications:**

Used for the Bonding of temporary Crowns , bridges, inlay/onlay. and overlay

**R699**



This product consists of double Intertwined polishing wheels. It is easy use for variety of applications. It can polish the areas where other wheels could not reach (e.g., occlusal surface). It works well for composites, glass ionomer and other materials without changing the original shape and damage to the polished material.

- 1.Coarse polishing
- 2.Moderate polishing
- 3.Fine polishing

**R499**

Max 1 per customer



**Indications:**

Composite restoration polishing and excess part removal, implant cleaning up, and polishing of inlay/onlay and crown restorations.



**R999**

Max 1 per customer

Expires Aug 2027

DEN CEM HANDMIX Self Adhesive Dual Cure Resin Cement

**Indication for use :**

DEN CEM II is suitable for cementation of crown and bridge which made of PFM or Zirconia. It is a liquid-powder form.

**Advantages:**

High bonding strength: Compare with glass ionomer cement, DEN CEM II has a good bonding strength and flexural strength.

Economic: One set can be used to fix at least 100 teeth. It is more economic in comparison with automix design

• **Chemistry Stability:** Liquid and powder are designed to be packed in separate bottles. The chemistry properties are more stable and can be stored in normal room temperature and no need of refrigeration

- Dual cure: Light cure and self cure for better choice
- Low solubility

Radiopaque

Fluoride releasing

Packaging Specifications:

Refill 8ml liquid + 15g powder Universal



#### Indications:

Applied to dentin as a protective liner from restorative materials, indirect pulp capping

#### Packaging:

Specification: 1.5g

#### Advantages:

- Light cure and easy to use
- Radiopaque
- Good physical properties
- Low solubility to water
- Good protection for pulp

# R299

Max 1 per customer

Expires Oct 2027



**R199**

Max 1 per customer

Expires Oct 2027



**Indications:**

Suitable for temporary retention of removable dentures  
Recommended usage: apply once a day before wearing



**Indications:**

Seal the pits and fissures on the tooth surface to prevent dental caries.



Expires Sept 2028

**R 999**

Max 1 per customer

**Indications:**

Fluoride Coating to increase the acid resistance of enamel and Prevent dental caries  
0.5g x 50



**R499**

Expires Feb 2029

**Indications:**

Relieve the symptoms of tooth sensitivity caused by dentin exposure.

Max 1 per customer



DX. Whiten composite belongs to Enamel shade composite system. In clinic practice, two or three kinds of veneer whitening composites are used to repair veneer. The whitening simulation is successfully achieved with nature tooth appearance.

Indications: • Discolored veneer and composite inlay

Advantages: Three shades of stratified filling to rebuild the layering of tooth Ideal viscosity, easily to shape High simulation, natural esthetic

- Good polishability and durability Packaging
- Specifications:
- Specification: 4g
  - Shade: EXW (Exetreme white), EW (Enamel white), BL(Bleach)



## Direct Veneers

# R799

Expires Sept 2028



Before



After



Increased transparency from EXW to BL



### Product Features:

The DENCOVER (Light Cure Liquid Polish), after light-curing, forms a smooth and glossy resin film on the surface of the resin, which can reduce the occurrence of surface staining on resin restorations.



### Scope of Application:

Surface treatment of resin dental restorations.

# R449

Max 1 per customer

Expires Jan 2029

### Packaging Specification:

Specification: 3.0ml/bottle



Click links

Available online ONLY !!

[www.magnificentcc.com](http://www.magnificentcc.com)

Max 1 per Customer

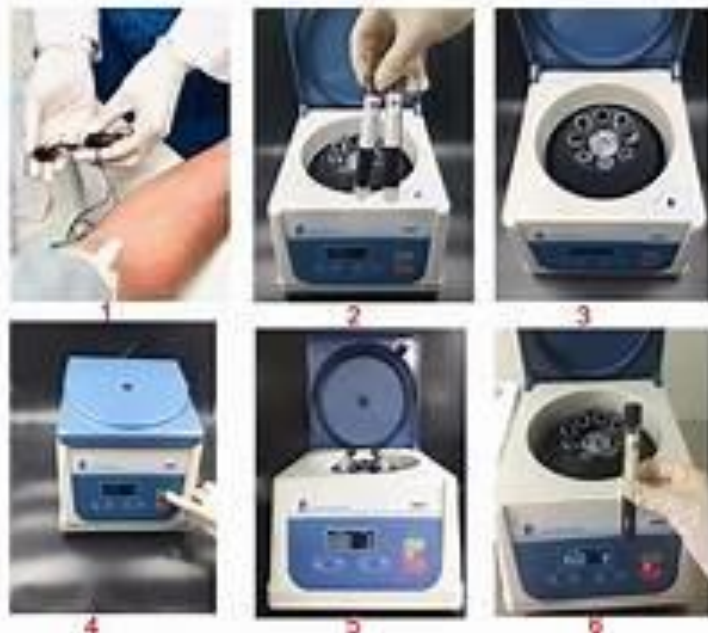
## PERIOSTEAL SOFT BRUSHING KIT



The concept of the Soft Brushing technique is to softly disrupt the organization of the collagen fibers of the fibrous periosteum so they can be displaced apically off the bone exposing the roots and bone. The Brushes in the kit reduce the stiffness of the fibers that permits the flap to be reflected and released only by using the Brushes.

**R1,999**

## PRF CENTRIFUGE PRP CENTRIFUGE



Includes 10 pcs Tubes for PRF Free  
Includes 10 pcs Tubes for PRP Free

**R 14,999**

## **10 Pc COMPOSITE FILLING & SCULPTING KITS**

**CRAZY  
DEAL**



High Heat Silicone  
Strong Teflon coated  
High Quality Product  
Stainless Steel

**R1,499**

**FREE SILICONE SCULPTING BRUSH KIT  
Includes the Stainless Steel Cassette**



Universal Screwdriver Kit

**R1950**



Tissue Punch Bur Kit

**R1550**



Surgical Implant Drill Kit with Wrench

**R2950**

**CRAZY  
DEAL**

**Implant Drill Kits  
On Promo !!**

Max 1 per Customer

**YEAR**  
*end*  
**SALE**

# SOLASE Laser Limit-less **S**MART



## SOLASE Dental Diode Laser



All Attachments optional Extra !

**LAZON**  
LAZON Medical Laser

**CRAZY**  
**DEAL**  
**DON'T MISS OUT!**

**LAZON**  
LAZON Medical Laser

**R 59,900**

Excludes Phone

Includes:

- Wireless Foot control
- Upgraded Laser Handpiece Attachment
- FREE Assorted Laser Tips

- **SELF-LEARNING**
- **PATIENT RECORD**
- **MULTI ACCOUNT**
- **CLOUD BACK UP**
- **APP UPDATING**
- **CUSTOM PRESETS**
- **OFFLINE MODE**
- **SMART TIP INITIATION**

# HYDRUMP



**FREE  
HANDPIECE  
OIL  
INCLUDED**

**R4990**

# HYDRUMP

- Exclusive Gold Finish
- High Quality
- Superior Cutting Efficiency
- 1 yr Warranty
- German Ceramic Bearings
- Premium Product
- AAA Quality



# 5<sup>th</sup> Generation 6LED Premium Shadowless Fast Turbine Handpiece

- High Performance LED Handpiece
- 6 LED Shadowless Light Projection
- 6 Spray Nozzles
- High Torque with Excellent cutting efficiency
- Light and comfortable
- Reinforced Body and casing
- Strong Ceramic Bearings
- A Quality
- Affordable and Value for Money
- 6 Month Warranty



**FREE!**

*The Workhorse of the Dental Surgery*



- Get 1x Free 550ml Oil , 1x FREE Matrix Kit,

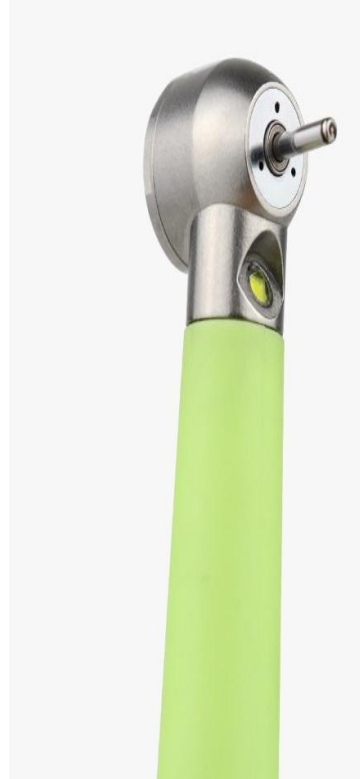
**CRAZY  
DEAL**



**FREE!**



**Now only : R2990**



**NEW**  
ARRIVAL



**ART STUDIO**



**Only R2490**

Max 2 per customer

**Available in Blue and Green**

\* 1month Warranty \*Ts & Cs Apply

# Caries at a glance

*A tool to achieve your treatment goals!*

Red: Carious plaque

Real-time detection of carious tissue

Green: Enamel

**CRAZY DEAL**

Now Available with FREE OIL

Fast handpiece with caries Detection function .

## Features of Caries Detection Handpiece :

- Ceramic bearings
- 8 cooling jets
- 4 water cooling , 4 air cooling
- 4 hole attachment to Midwest tubing
- NSK Type Quick Connector



**R5,999**

With NSK Type I Quick Connector

**PACKAGE DEAL**

**PREMIUM HANDPIECE PROMO SPECIAL #1**  
**PURCHASE 3 X FAST TURBINE 3<sup>rd</sup> GEN LED..**  
**AND GET 1x Slow Set FREE + 3x Matrix Kits + 3x OIL FREE**



**R9,999**

\*1 month warranty



**Contra Angle**  
**available as latch type ONLY !**  
**5 packs Prophy Brushes Free**  
**Mix and Match the shape**



**3 Free Matrix Kits**



**3 Free OIL**

**HANDPIECE PROMO SPECIAL LIMITED TO 1 SPECIAL PER CUSTOMER- FIRST 10 CUSTOMERS ONLY**

# PREMIUM HANDPIECE PROMO SPECIAL #2 PURCHASE 1 X FAST TURBINE 3<sup>rd</sup> GEN LED AND GET 1x Slow Set FREE + 1x OIL FREE



**R4,499**

\*1 month warranty

**PACKAGE DEAL**

=



+



Contra Angle available as latch type ONLY !  
2 xFREE Packs Proply Brushes included

1 Free OIL

HANDPIECE PROMO SPECIAL LIMITED TO 1 SPECIAL PER CUSTOMER- FIRST 10 CUSTOMERS ONLY

## Xray Sensor Sleeves



Jumbo Pack, 500 pcs  
Limited to 1 per  
Customer/Practice  
Price valid on delivery  
Orders

**R599,90**

## Slow Set Handpiece Kit

**R1,899**



Latch Type Only  
Price valid on delivery Orders  
Max 2 per customer ,No Warranty

## Dental Prophyl Brushes



**R49**

Cup Shaped /  
Flat Shaped  
Multicolour  
Animal Free  
Pkts of 12pcs



**R39**

Max 10pkts  
Each type

### Matrix band Kit



**R99**

Max 2 per customer

Latch or  
Push  
Button



**R 699**

Max 2 per customer  
No warranty

# Dental IPR (Inter Proximal Reduction) Kit

## Orthodontic Interproximal Reduction (IPR) Contra Angle 4:1 Stripping Kit

The blade holder features a secure connection, ensuring stability. Uniquely designed holes in the unglazed blade surface effectively filter out water and debris while stripping. Made from durable material, the blade offers a long lifespan. The anti-skid 3D pattern provides a comfortable and secure grip. With a quick-connect design, it offers convenience and saves time during use.

### Features:

**Soft Sound & Ultra Quiet:** Provides a comfortable and quiet experience for patients

**Patient Comfort:** More comfortable than manual hand stripping, reducing gagging and soft tissue irritation

**Doctor-Friendly Design:** Minimizes the need to hold rotating instruments, offering easier handling

**Ergonomic, Single-Handed Use:** Optimizes tactile control and reduces hand fatigue

**Flexible Strips:** Conforms to natural tooth contours, preventing sharp corners and excessive enamel removal

**Versatile Application:** Effective for both anterior and posterior areas; ideal for invisible treatment and rapid enamel restoration

**Autoclavable:** Ensures proper sterilization and hygiene

**4:1 Gear Ratio:** Low-speed operation ensures oral safety for patients

### Variety of Saw Blades:

90 $\mu$ m: Double-sided, carborundum material, used as a saw for opening contacts

60 $\mu$ m: For reduction

40 $\mu$ m: For contouring

25 $\mu$ m: For finishing

15 $\mu$ m: For pre-polishing

### Packaging includes the following:

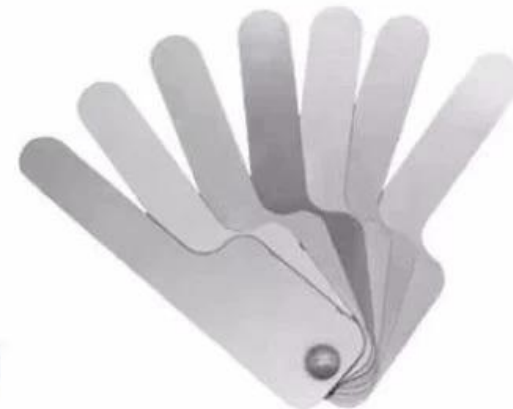
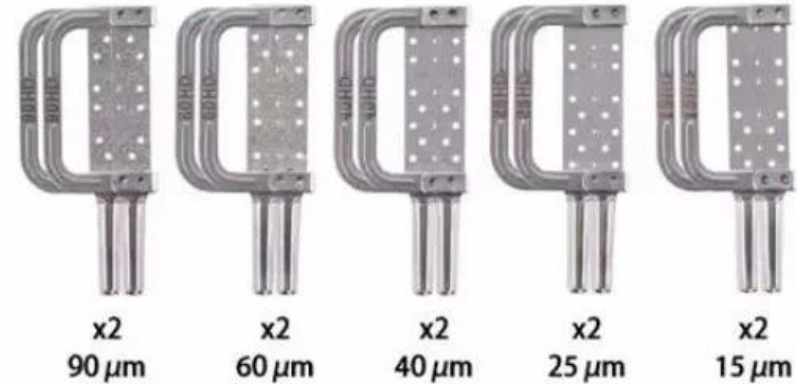
1 x Strip contra angle

1 x IPR thickness gauge

1 x Removal tool

10pcs x Double-sided saw blade (5 models & 2 pieces each)

R3990



**NEW  
PRODUCTS**

**TPC**

**Handpiece Lubricating Unit**  
It's Simple, Safe and Economical



**Free Contra Angle  
with Each Purchase**

**Only R9,990**

# AIR POLISHER SYSTEM



Supragingival Cleaning  
Interdental Space Cleaning  
Subgingival Cleaning  
Orthodontic brackets Cleaning  
Air polishing after Scaling  
Preparation to bond Ortho Brackets  
Implant and Abutment Cleaning  
Stain Removal and Smoothing  
Preparation for Bleaching  
Tongue and palate Cleansing  
Versatile



**SIMILAR TO i-JET**

Prophy Jet is a must-have device in every dental office due to its wide application and benefits in dentistry. The device is versatile, efficient, and gentle, and provides a comfortable experience for the patient. Investing in a Prophy Jet will not only improve the quality of dental care provided but also save time for both the dentist and the patient. The device is also an excellent investment in the long-term oral health of patients. Dental professionals should consider adding the Prophy Jet to their arsenal of tools to provide the best possible care to their patients.

**R5,950**

# Arm Automatic Blood Pressure Machine



White in colour  
Voice over speaker  
Touch Button  
LCD display  
USB charging  
Req. AAA Batteries

Purchase and get a  
**FREE**  
PULSE OXIMETER



# R399



# Wrist Auto BP Machine

Voice over speaker  
Black in colour  
LED touchscreen  
USB Charging

Purchase and get a  
**FREE**  
PULSE OXIMETER



# R599

# COXO<sup>®</sup>

Professional Dental Manufacturer

**NEW  
ITEM**

**+2x Handpieces, Scaler Tips,  
Abrasive Powder &  
Wireless Foot Control**

Ultrasonic Scaling  
Implant and Ortho Maintenance  
Minimally invasive Restorations  
Perio/ Endo Treatments  
Air Polishing and Abrasion

**Purchase this month for :**

**R59 900**

PROFESSIONAL Periodontal  
Air Polisher System  
**PT MASTER**  
With  
Wireless Foot Control





**Promotional Price : R69 900**  
**Built- in Led Scaler & Curing Light**

**FREE With Deal**

Auxiliary Air/Water Quick Connector  
Auxiliary Air/Water Valve  
Auxiliary Built In Power Socket  
Internal Spray Contra Angle

**MOBILE SELF CONTAINED DENTAL  
DELIVERY UNIT incl Compressor**

**First 3 Customers for Receive FREE LED Fast Handpiece and Internal water Slow Set  
(valued @ R6000)**

# Anaesthesia

## Oral Anesthesia Injector



ANXIETY



UNINSTALLING...

**R4,990**

Metric and Imperial  
Needle Connection

**CRAZY  
DEAL**

New Computer Controlled Anaesthetic Pen  
Anxiety Beating / Stress Free Treatment

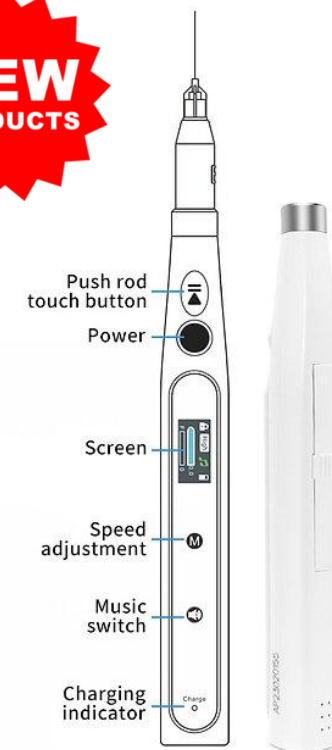
**NEW  
PRODUCTS**

Screen:



1. Lock screen symbol
2. Speed adjustment
3. Music switch
4. Battery indicator
5. Injection dosage
6. Dynamic pressure feedback

Battery charging:



Now with Music option , Audible Chime and Voice activated dispensing prompt  
Be that Dr. with the latest and most modern equipment, Your patient will love it and Praise you !!



# Military Portable Unit 6 Holder

**CRAZY  
DEAL**



**R29900**  
Built in LED Curing Light and LED Scaler

**CRAZY  
DEAL**



Purchase with Portable Dental Chair, Dental Stool,  
Spittoon and Examination Light  
For R49,900  
And receive the Heavy Duty Carrier Bag FREE!



# Curing Lights

Max 1 per customer  
First 3 Customers on each

## SWAN 1sec Curing Light - Broad Spectrum Led - Premium Exclusive

- Constant Current Drive
- Wireless
- Dual Intensity Mode
- Hygienic
- Broad Spectrum Led-  
Wavelength 385nm - 515nm

### Features:

#### Dual intensity mode:

•P1 High intensity mode  
Constant intensity: 2300-  
2500mw/cm<sup>2</sup>

#### •P2 General intensity mode

Constant intensity: 1000-  
1200mw/cm<sup>2</sup>

#### Broad-spectrum : Curing most materials

Ability to cure new photoinitiators  
in the latest Composite resins.



**R9,999**  
Max 1 per customer



## Max cure 9 Wireless Curing Light 2000 MW/cm<sup>3</sup>



**R3,999**



Light power more than 2000mw/cm<sup>2</sup>.  
3 Distinct Modes: Strong, Flashing,  
Gradually strong.  
2600 mAh Large-capacity lithium battery.  
5W Big power LED.  
Full charging available use more than 200  
times.  
Automatic Standby/Automatic shutdown.

## Maxcure 5 Wireless Curing Light 1800 MW/cm<sup>3</sup>

Power Input: 100-240VAC, 50Hz/60Hz  
Power Output: 5V DC/1A  
Wave length: 420 nm-480 nm  
Light intensity: 1000mW/cm<sup>2</sup> – 1800mW/cm<sup>2</sup>  
Battery voltage and capacity: 3.6V/2600mAh  
Battery model ICR 18650-2600mAh



**R2,999**

## Curing Light Promo

High Power  
1s or 5s  
Tips included:  
Orange tip-carries  
Green Tip – Fracture  
Spot Cure  
Long tip Cure and  
various other tips  
Magnetic attachment  
to the head

**R2,499**



## Curing Light Promo

- Magnificent Branded
- High Power
  - 1s or 5s
  - Vibration feedback
  - Metal Housing
  - Metal Base
  - Limited Edition Black

Max 1 per customer



## DISPOSABLE CHEEK RETRACTORS



**R39.90**  
Single Packs

- Latex Free
- Allows Lips and cheeks to be fully Isolated
- Flexible and comfortable
- Single Use
- Medium Size
- Available as 20pcs per box

**R639**  
Packs of 20pcs



Buy A Box and save 20%

## DENTAL NOLA DRY FIELD CHEEK/LIP RETRACTOR SUCTION SYSTEM



Used In Various Oral Treatment Scenarios Such As Pit And Fissure Sealants,  
Posterior Restorations, Bonding Ortho Brackets, Teeth Bleaching /  
Whitening

- Dry Field System keeps the mouth dry while isolating arches from tongue and cheeks.
- High-heat plastic and silicone construction autoclavable to 135 degrees
- Great for sealants, ortho bonding, and posterior restorations
- Combined into each appliance is an adjustable cheek retractor, saliva ejector, tongue guard and low-volume suction connection.
- Specially designed not to cover occlusal surfaces of the teeth.

**R999**



# Rubber Dam Promo Deal

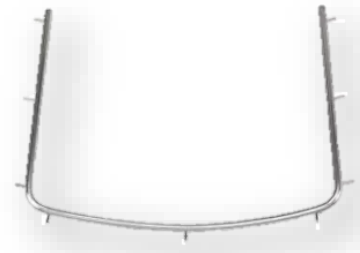
Buy the Rubber Dam Kit and  
Receive the Box of Rubber Dam Material for FREE

**RUBBER DAM CLAMPS x 6**

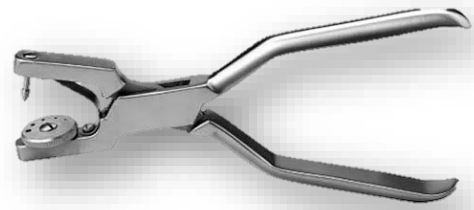


2x Anterior  
2x premolar  
and 2x molars

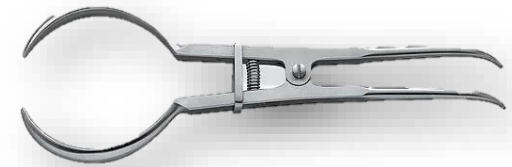
**RUBBER DAM FRAME x 2**



**RUBBER DAM PUNCH**



**RUBBER DAM CLAMP  
HOLDER**



# R1,999

Available as :  
5 x 5 in BLUE (52 sheets) or  
Available also in 6 x 6 in GREEN (36 sheets)

Max 1 per Customer , 1<sup>st</sup> 5 Customers Only



# Xray Positioner Kits

**NEW  
PRODUCTS**



- Aligns film to prevent cone cutting
- Rounded bite blocks with no sharp edges improve comfort.
- Open bite block design offers patients a soft bite
- New bitewing shape with same-arch biting for a more closed bite

**R1999**



- Excellent Sensor Protection, For digital sensor with line  
The clamp size can be adjusted for different imaging plates
- 1, (Green) For right maxillary upper premolar/molar and left mandibular
  - 2, (Blue) For left maxillary premolar and right mandibular premolar/molar
  - 3, (Yellow) For maxillary/ mandibular incisor -Anterior teeth

**R 1299**

Twin Lights Oral  
Photography



**SOLD OUT**

Use with your  
cellphone

IntraOral Photography  
Contrast Kit



**R1,799**

IntraOral Photography  
Mirror Kit



**R1,599**

RING Light Oral  
Photography



Now with Macro Lens  
And Polaroid Filter  
Use with your cellphone

**R1,999**

Black Contrast  
Cheek Retractor  
Twin Size



**R480** Sold as Pair

Anti – Fogging  
Mirror Kit with  
Mirror  
Attachments



**SOLD OUT**

Black Contrast Twin  
Lip Retractor



**R280**  
Small or Large

Black Contrast Front  
Lip Retractor



**R380**  
Sold as Pair Small or Large

**Intra Oral Camera System with 17" Monitor + 12 MP Camera**



**R9,900**

- 1. Upgraded 17inch Monitor
- 2. 1/4 CMOS high resolution 12MP intraoral camera
- 3. Built-in 4pcs high brightness long-life white LEDs
- 4. Intergrated image software and with dentist management software



**Intra Oral Camera System With Integrated Computer Touch Screen + I5 Integrated Computer + HD Camera**



**720p HD**

**R18,900**

- 1. Upgraded Wi-Fi + 23-inch touch computer screen all-in-one , can be operated by finger directly, or onscreen keyboard
  - 2. 1/4 CMOS high resolution 720p intraoral camera, high performance
  - 3. Built-in 4pcs high brightness long-life white LEDs
  - 4. Dentist management software
- 23-inch HD touch screen WIN10 32-bit flagship edition  
processor Intel Core i5 CPU installation memory (RAM)8GB/128G  
solid state disk 32-bit operating system built-in Wi-Fi  
Optional Wireless Mouse and Wireless Keyboard

**Intra Oral Camera System With Integrated Computer Touch Screen + I5 Integrated Computer + 4K Camera With Smart Auto Focus**



**4K ULTRAHD**

**R24,900**

- 1. Upgraded Wi-Fi + 23.8-inch touch computer screen all-in-one , can be operated by finger directly, or onscreen keyboard
  - 2. 1/4 CMOS high resolution 1080p intraoral camera, high performance and auto focus.
  - 3. Built-in 6pcs high brightness long-life white LEDs
  - 4. Running 3D image software and with dentist management software
- 23.8-inch HD touch screen WIN10 64-bit edition  
processor Intel Core i5 CPU installation memory (RAM)8GB/128GB solid state disk 64-bit operating system  
built-in wireless network card Cable socket +HDMI+VGA+USB

**CRAZY DEAL**

**FREE OFFER:**

**Receive Free Intraoral Monitor Arm To Attach To Dental Chair**

Max 1 per customer

# Implant UV Activator



It can use vacuum ultraviolet rays to catalyze and activate the surface activity of implants

- Improve the rate of osseointegration
- Shorten the time of bone healing
- Accelerate the clinical osseointegration of dental implants and improve the success rate of dental implants.
- Improve bone contact rate (BCR)
- The BCR of Non-activated implants is about 50-60% and activated implants can increase to over 90%
- Shorten dental restoration time
- Dental restoration time: Reduced from 3 months to 1 month
- Expanding implant adaptation
- Improved implant success rate for high-risk dental treatment
- Rapid activation - Activation only takes 10s
- Ozone sterilization Built-in ozone filtration to prevent leakage
- Vacuum UV
- Ultra High Implant Compatibility (S, L, M1.4, M1.6, M2.0)

R79,900

# Implant Stability Meter

Grand Launching Offer

It is a stability measuring device that uses tapping method, which measures the time of the Tapping Rod of the device contacting the implant. Used for for dentistry and dental implantology or oral cavity, or abutment, to measure the stability .

The result of the measurement is displayed in iST scale (implant Stability Test), which is the numerical representation of the Implant Stability Test (iST) value, and higher scale represents greater implant stability or lower implant mobility.

## Characteristics

Convenient usage due to small and light design

Easy to use due to simple controlling method

Fast measuring time less than 3 seconds

Safe measurement due to slight tapping technique and auto safety system (tapping stops after tapping twice when Osseointegration is unstable, otherwise taps up to 6 times.)

Available to check possibility of implant failure at in earlier stages

**This model is much simpler to use than the NSK model. With the NSK model, you need to install a probe on the implant first. With this model, you can see the ISQ value on the display screen by gently tapping the implant. From the numerical value Determine the stability of the implant.**

## Implant Stability Meter

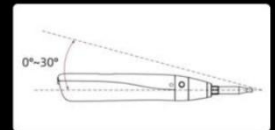
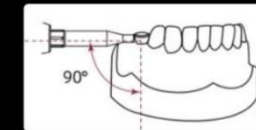


R24,900

## 2-step procedure



1. Carefully position the tip of the Tapping Rod to the upper edge of the healing abutment while being cautious not to push the abutment. When the Tapping Rod of the handpiece is located 90 degree from the side part of the top of the healing abutment and the ON/OFF switch is pressed once, the tapping motion starts after 0.5 second.



Remarks: The measured stability value is more accurate when the degree between the healing abutment and the Front Guide is closer to 90 degree. Maintain the contact angle within the range of 0° ~ 30° to upward when measuring. Due to the different bone widths in different directions of the implant, the measurement data will be biased. Try to measure the stability value from multiple angles to get a reasonable value.

2. An ISQ value is generated and shown on the LCD display. This reflects the level of stability on the universal ISQ scale -from 1 to 99. The higher the ISQ value, the more stable the implant.



If ISQ value appears as Red (01 to 59), the stability is not up to the standard.  
If ISQ value appears as Yellow (60 to 64), the stability reaches the benchmark value.  
If ISQ value appears as Green (65 to 99), the stability is good.

Remarks: Number of tapping: Tap 2 times until the measured value of 1-59. After 60-99, the device taps 6 times in order to measure the stability.

# Implant Locator



**R9,900**

- Handy Piece of equipment in Implant Dentistry
- Especially for 2 stage dental implant Surgery
- Can have a minimal invasive uncovering of the implant with the Locator
- No more Guess Work !
- Work faster , easier , simpler and smarter !!

## PREMIUM DR STOOL



**NOTICE:**  
These are Premium Stools With  
Metal Legs and  
Premium Castors

**Colours:**  
Turquoise, Dark Blue , Yellow & White  
Similar to Illustration

**DON'T  
MISS  
OUT!**

**R3,999**

## PREMIUM ASSISTANT STOOL



**DON'T  
MISS  
OUT!**

Similar to Illustration

**R1,999**

## PREMIUM DELUXE DR SADDLE STOOL



LIMITED EDITION  
SADDLE DESIGN  
ERGONOMIC  
COMFORTABLE  
STYLISH

**Colours:**  
Lime Green & White  
Similar to Illustration

**DON'T  
MISS  
OUT!**

**R5,999**

Various Colours  
Max 1 per Customer  
Last few Remaining  
Get Yours !!!

**EXCLUSIVE**

**PURCHASE**

**Xray  
Sensor**

**CRAZY  
DEAL**

HDR 500 - Size #1



**R 22,900**

**Includes :  
Regular Single user  
version software  
Free License and Registration  
Great Deal !!**

HDR 600 - Size #2



**R 25,900**



**INTRA ORAL  
CAMERA**



USB connection  
High Quality Intra Oral Photos  
Optional Network/ twain  
Version

**R8 999**

**X-RAY  
LEAD APRON**



**X-RAY  
THYROID COLLAR**



Buy the combo deal  
For Only

**R5,999**

ROOM ATOMISER  
(360 DEGREES)



**CRAZY  
DEAL**

ANION  
DISINFECTANT  
SPRAY GUN



Purchase any EXTERNAL DENTAL SUCTION and get the ROOM ATOMISER and ANION DISINFECTANT GUN for R1999

EXTERNAL  
DENTAL  
SUCTION  
v.1.0

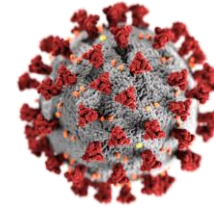


**R7 900**

EXTERNAL  
DENTAL  
SUCTION  
v.2.0  
LCD



**R8 900**



**A CLEAN  
WORK AREA  
IS A  
SAFE  
WORK AREA**

**VIRUS  BUSTERS**

 **SafeClean**  
SANITATION

Purchase the UV CABINET and get  
The UV LAMP & OZONATOR FREE



**AMAZING  
DEAL**



**R 6 999**

**SURGICAL  
BLADES**



#10, #15  
#21, #22

**SOLD OUT**

**DISPOSABLE  
SYRINGES 3ml**



**R 3.99**

**DENTAL GINGIVAL  
RETRACTION CORD**



**R 99**

**FIBRE POST  
REFILLS ONLY**



Available as  
kit with drills  
for R699 each

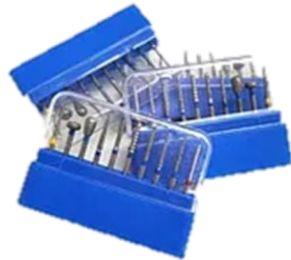
**R 299**  
20 Pcs



**AUTOCLAVABLE  
BUR HOLDER**



16 HOLE  
SETTING



Buy 5 get  
1 FREE  
Bur Kit

**R 299**

**SILICONE RUBBER  
MOUTH PROPS**



**R 299 each**

**AUTOCLAVABLE  
ULTRASONIC SCALING KIT**



**R2,999**

**NEW MODEL NP CLASS  
STEAM STERILIZER**

**R29 900**



**Manual Water Filling  
FREE WATER DISTILLER**

**REGULAR N CLASS  
STEAM STERILIZER**

**SOLD OUT**



**Manual Water Filling**

**REGULAR NM CLASS  
STEAM STERILIZER**

**R29 900**



**Automatic Water Filling  
FREE WATER DISTILLER**

**WATER DISTILLER  
(WHITE)**



**R2999**

**WATER DISTILLERS (WHITE)**



**+**

**ULTRASONIC CLEANER**



**+**

**INSTRUMENT SEALING MACHINE**



**Buy the Combo  
Safety Deal !**

**R12,490**

**18L B CLASS AUTOCLAVE**



**R44,900**

**DON'T MISS OUT!**

**23L B CLASS AUTOCLAVE**



**R49,900**

**10L HAETMED B CLASS A50B AUTOCLAVE**



**SUPER FAST CYCLE**

**R169 900**

- +FREE DISTILLER (White)
- +FREE SEALING MACHINE
- +FREE ULTRASONIC BATH

**PREMIUM WATER DISTILLER (STAINLESS STEEL)**



**SOLD OUT**

**INSTRUMENT SEALING MACHINE**

**DON'T MISS OUT!**



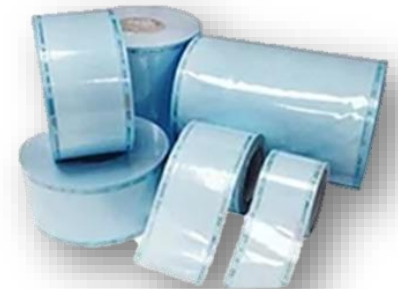
**R6 999**

**ULTRASONIC BATH**



**R5 999**  
3.2L

**STERILIZATION ROLLS**



- 50mm X 200M - R799
- 75mm X 200M - R999
- 100mm X 200M - **SOLD OUT**
- 200mm X 200M - R1 999